

546-8000 Cover Tamper Switch

For use with System Sensor Pressure Switches:
EPS10-1, EPS10-2, EPS40-1, EPS40-2, EPS120-1, EPS120-2

Specifications

Contact Ratings:	5A @ 125/250 VAC 2.5A @ 6/12/24 VAC
Operating Temperature Range:	-40° to +160°F (-40° to +71°C)
Shipping Weight:	0.115 lbs.

NOTICE: This manual should be left with the owner/user of this equipment.

General Information

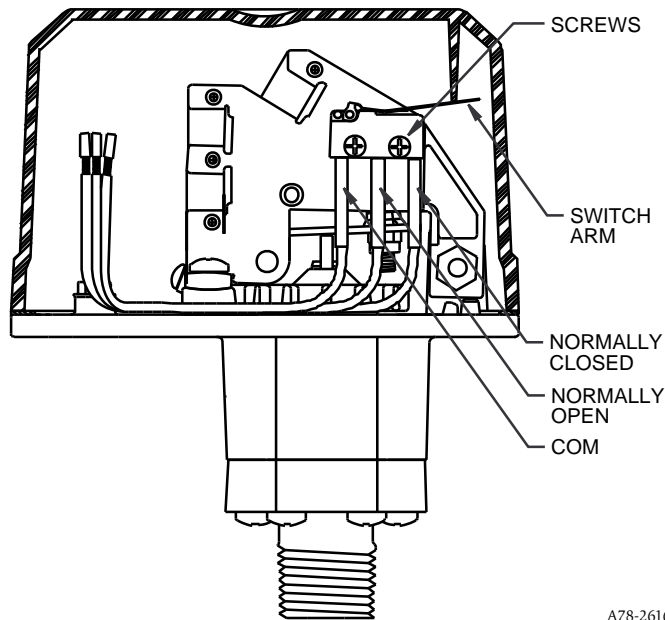
The System Sensor 546-8000 cover tamper switch mounts to EPS series pressure switches to monitor removal of the cover. Cover removal produces a switch output. The unit will reset when the product cover is reinstalled.

Wiring Instructions

1. Remove the pressure switch cover using the security wrench provided with the pressure switch.

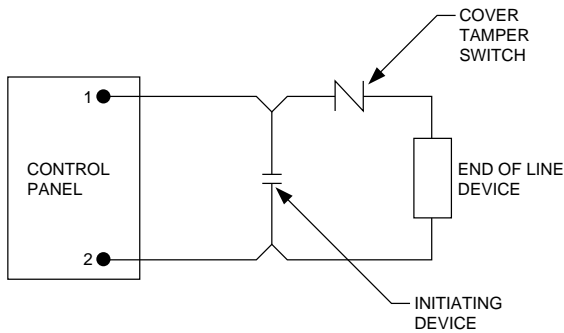
2. Attach the cover switch with the two screws provided (see Figure 1).
3. Route wires away from the pressure switch mechanism.
4. Wire the circuit as shown in Figures 2, 3, or 4, or as required by the installation requirements and as approved by the authority having jurisdiction. Clip the unused wire from the tamper switch and use the wire nut to protect from shorting.
5. Perform the required system tests and include the cover tamper switch in the test by alternately replacing and removing the cover to produce the desired circuit effects.
6. After testing, secure the cover with the security wrench.

Figure 1. Wire routing inside EPS Series pressure switch:



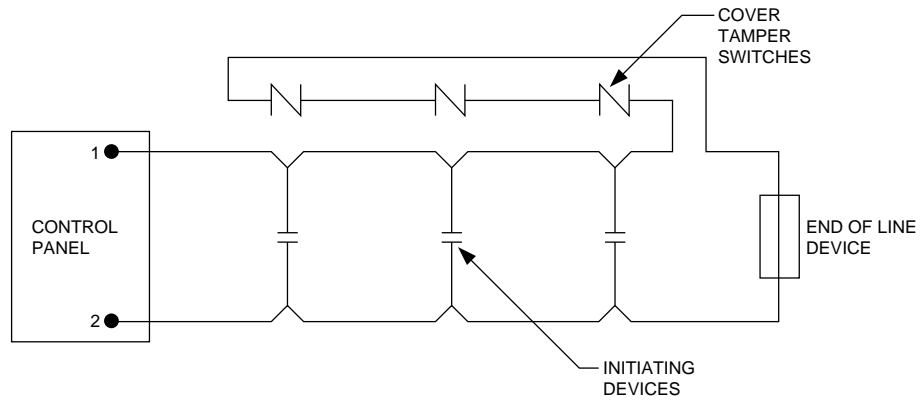
A78-2616-01

Figure 2. Class B initiating circuit with single device:



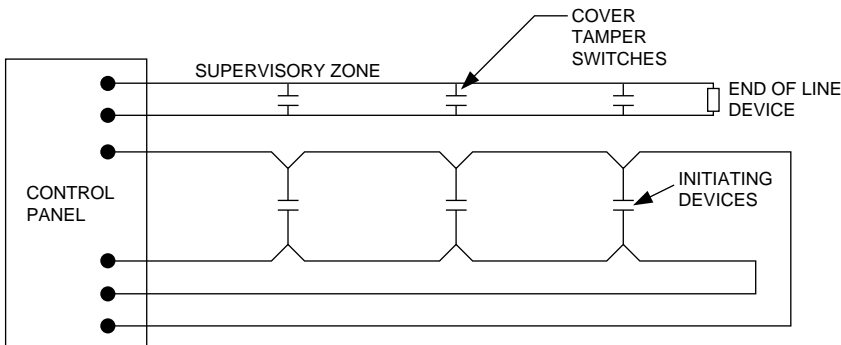
A78-2617-00

Figure 3. Class B initiating circuit with multiple devices:



A78-2618-00

Figure 4. Class A 4-wire initiating circuit with multiple devices:



A78-2619-00

Three-Year Limited Warranty

System Sensor warrants its enclosed cover tamper switch to be free from defects in materials and workmanship under normal use and service for a period of three years from date of manufacture. System Sensor makes no other express warranty for this cover tamper switch. No agent, representative, dealer, or employee of the Company has the authority to increase or alter the obligations or limitations of this Warranty. The Company's obligation of this Warranty shall be limited to the repair or replacement of any part of the cover tamper switch which is found to be defective in materials or workmanship under normal use and service during the three year period commencing with the date of manufacture. After phoning System Sensor's toll free number 800-SENSOR2 (736-7672) for a Return Authorization number, send defective units postage prepaid to: System Sensor,

Repair Department, RA # _____, 3825 Ohio Avenue, St. Charles, IL 60174. Please include a note describing the malfunction and suspected cause of failure. The Company shall not be obligated to repair or replace units which are found to be defective because of damage, unreasonable use, modifications, or alterations occurring after the date of manufacture. In no case shall the Company be liable for any consequential or incidental damages for breach of this or any other Warranty, expressed or implied whatsoever, even if the loss or damage is caused by the Company's negligence or fault. Some states do not allow the exclusion or limitation of incidental or consequential damages, so the above limitation or exclusion may not apply to you. This Warranty gives you specific legal rights, and you may also have other rights which vary from state to state.