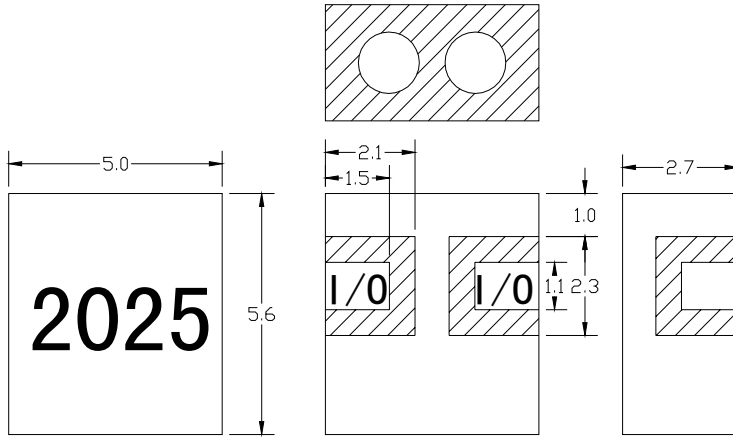
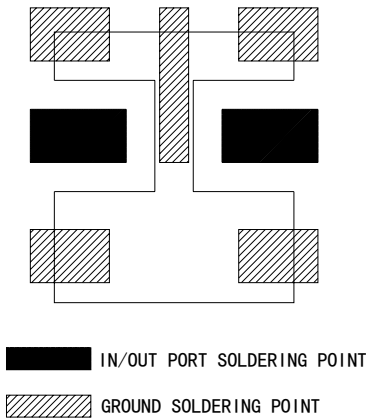


5. APPEARANCES AND DIMENSIONS

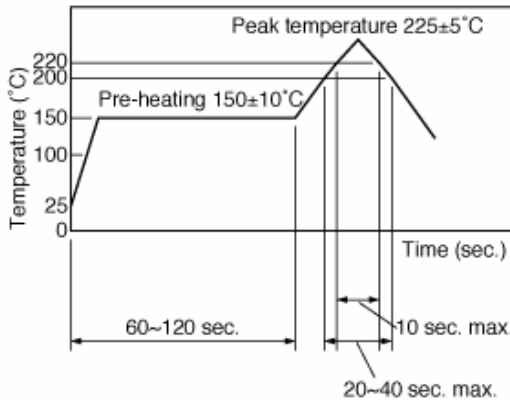


Tol: ± 0.2
Unit: mm

6. RECOMMENDED REFLOW PAD



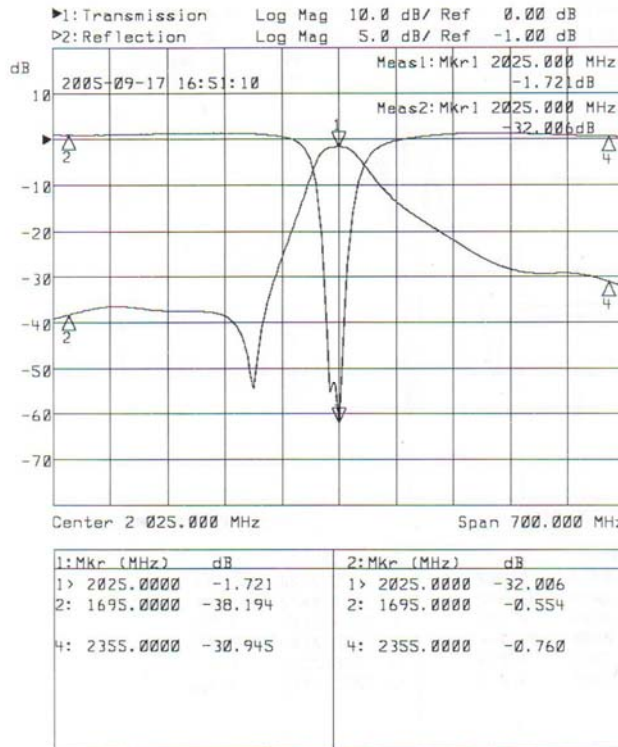
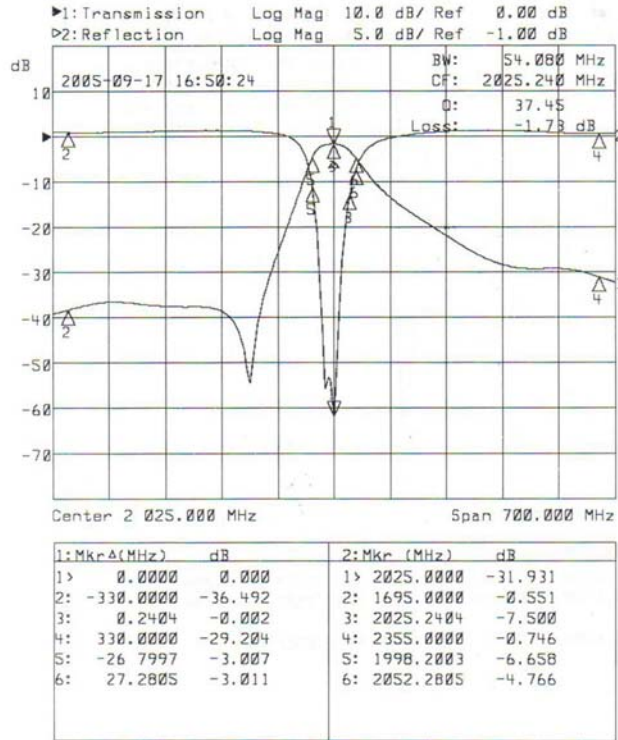
7. REFLOW SOLDERING STANDARD CONDITIONS



SIPAT Co., Ltd.
(CETC No. 26 Research Institute)
Nanping Huayuan Road No. 14
Chongqing, China, 400060

Part Number	DF2025S50	
Rev. Date	2005-9-21	
Rev.	1.0	Page 2/3

8.CHARACTERISTICS



SIPAT Co., Ltd.
(CETC No. 26 Research Institute)
Nanping Huayuan Road No. 14
Chongqing, China, 400060

Part Number	DF2025S50	
Rev. Date	2005-9-21	
Rev.	1.0	Page 3/3