

---

**SAW Filter 776.50MHz****Model: TA0557A****Part No: MA08039****REV. NO.: 1**

---

**A. MAXIMUM RATING:**

1. Input Power Level: 10 dBm
2. DC voltage: 3 V
3. Operating Temperature: -20°C to +70°C
4. Storage Temperature: -40°C to +85°C

**B. CHARACTERISTICS:**

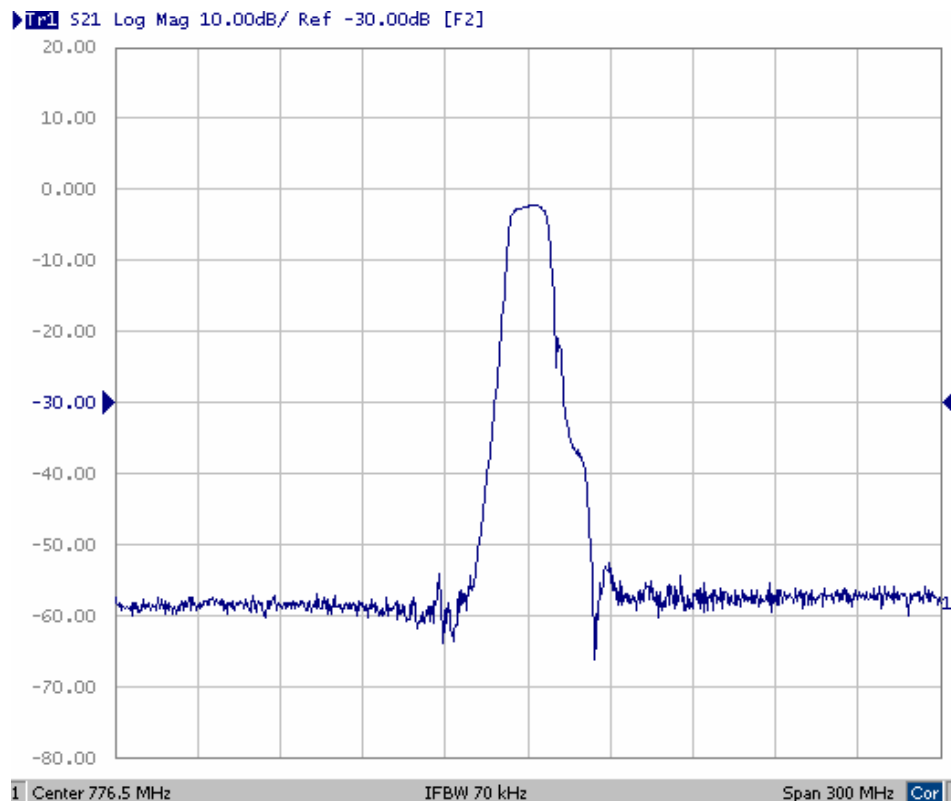
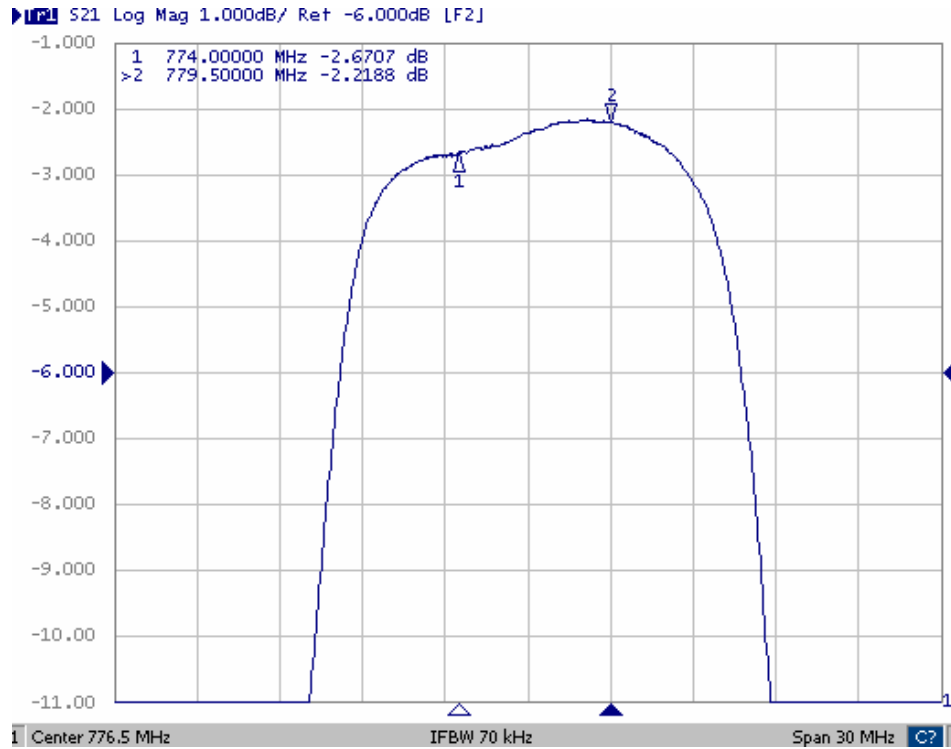
Item		Min.	Typ.	Max.
Center frequency	F <sub>c</sub> MHz	-	776.5	-
Insertion loss	774 ~ 779.5 MHz IL	-	2.6	4.2
Amplitude ripple	774 ~ 779.5 MHz	-	0.7	1.5
Attenuation (Reference level from 0dB)				
729 ~ 734	MHz	30	50	-
819 ~ 824	MHz	30	50	-
Source impedance	Z <sub>s</sub>	-	50	-
Load impedance	Z <sub>L</sub>	-	50	-

Note1. No matching network required for operation at 50Ω

**SAW Filter 776.50MHz**  
**Part No: MA08039**

**Model: TA0557A**  
**REV. NO.: 1**

**C. TRANSFER FUNCTION:**



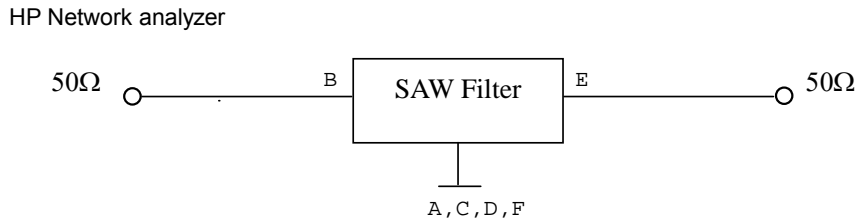
**SAW Filter 776.50MHz**

**Model: TA0557A**

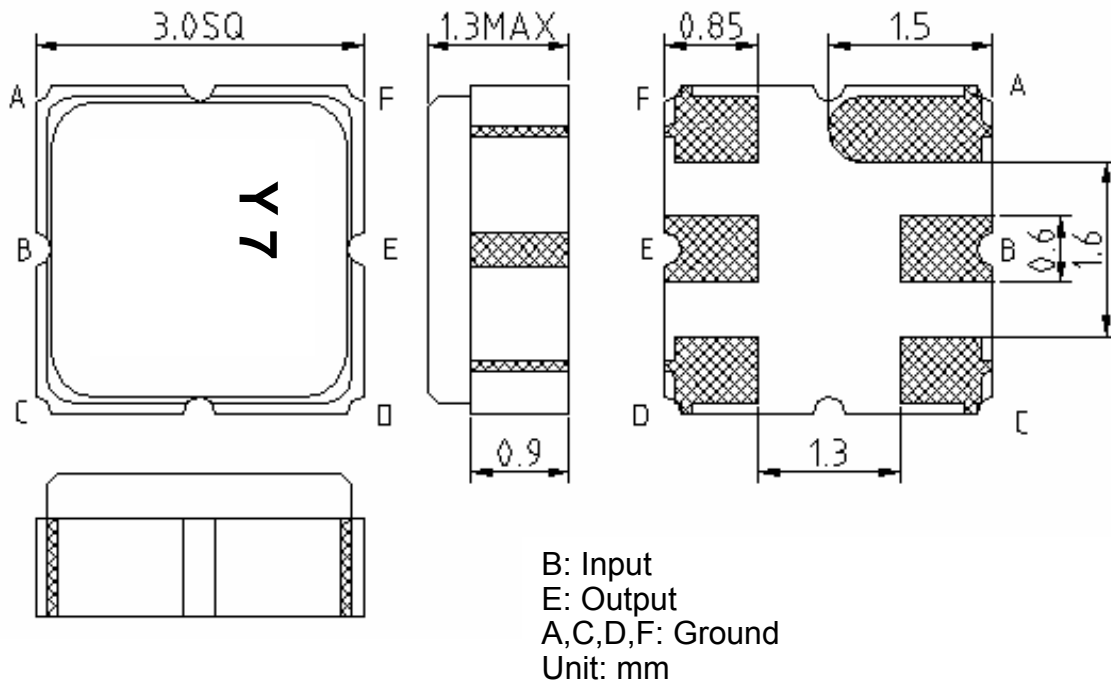
**Part No: MA08039**

**REV. NO.: 1**

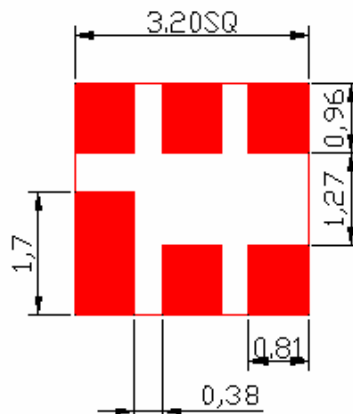
**D. MEASUREMENT CIRCUIT:**



**E. OUTLINE DRAWING:**



**F. PCB FOOTPRINT:**

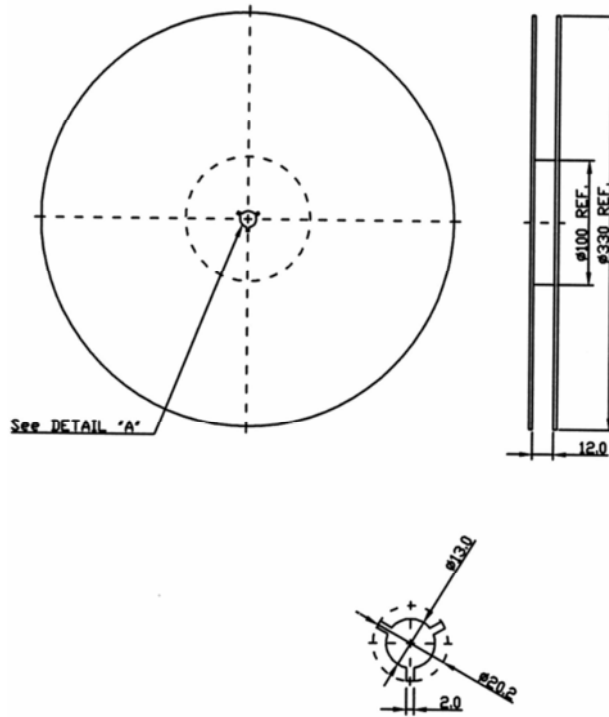


**SAW Filter 776.50MHz**  
**Part No: MA08039**

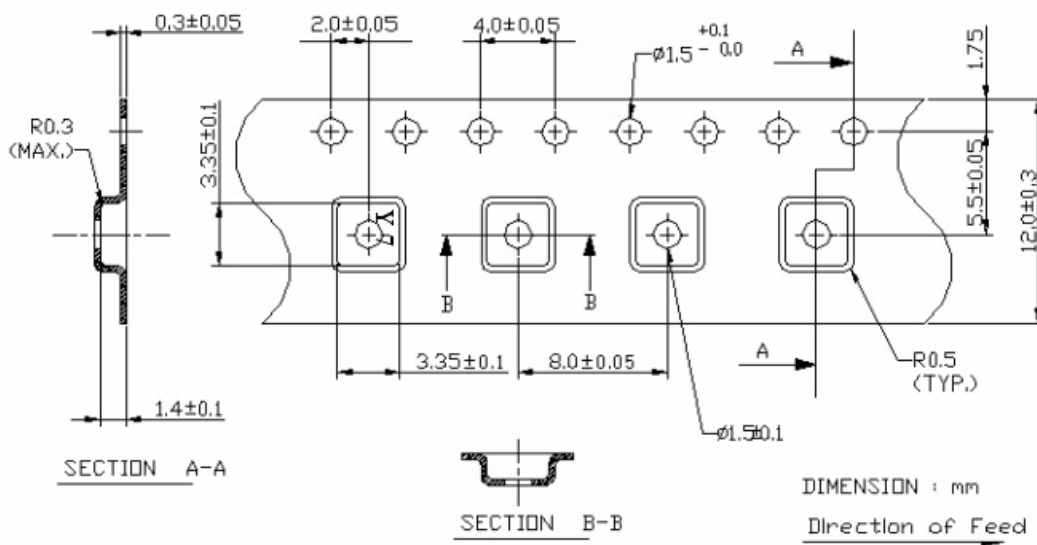
**Model: TA0557A**  
**REV. NO.: 1**

**G. PACKING:**

**1. REEL DIMENSION**



**2. TAPE DIMENSION**



**SAW Filter 776.50MHz**

**Model: TA0557A**

**Part No: MA08039**

**REV. NO.: 1**

**H. RECOMMENDED REFLOW PROFILE:**

