



# FTP Series

- Ideal for inverter smoothing capacitors such as Electric Vehicle, Hybrid Car, etc.
- Endurance with ripple current : 85°C 5000 hours
- Rated voltage range : 63 to 450V<sub>dc</sub>
- Lower profile offers drastic space saving comparing to conventional cylindrical type
- Superior heat radiation realizes higher ripple current

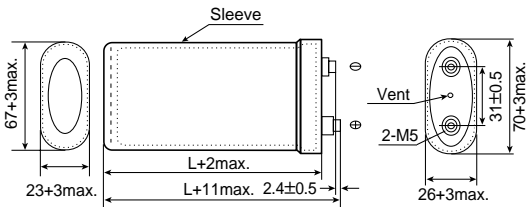


## ◆ SPECIFICATIONS

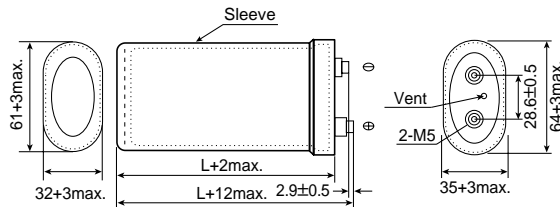
Items	Characteristics
<b>Category Temperature Range</b>	-40 to +85°C (63~100V <sub>dc</sub> ), -25 to +85°C (350~450V <sub>dc</sub> )
<b>Rated Voltage Range</b>	63 to 450V <sub>dc</sub>
<b>Capacitance Tolerance</b>	±20% (M) (at 20°C, 120Hz)
<b>Leakage Current</b>	I=0.02CV or 5mA, whichever is smaller. Where, I : Max. leakage current (µA), C : Nominal capacitance (µF), V : Rated voltage (V) (at 20°C after 5 minutes)
<b>Dissipation Factor (tanδ)</b>	0.25 max. (at 20°C, 120Hz)
<b>Low Temperature Characteristics</b>	Capacitance change 63 to 100V <sub>dc</sub> : C(-40°C)/C(+20°C)≥0.6 350 to 450V <sub>dc</sub> : C(-25°C)/C(+20°C)≥0.7 (at 120Hz)
<b>Endurance</b>	The following specifications shall be satisfied when the capacitors are restored to 20°C after subjected to DC voltage with the rated ripple current is applied for 5000 hours at 85°C.
	Capacitance change ≤±20% of the initial value
	D.F. (tanδ) ≤200% of the initial specified value
	Leakage current ≤The initial specified value
<b>Shelf Life</b>	The following specifications shall be satisfied when the capacitors are restored to 20°C after exposing them for 1000 hours at 85°C without voltage applied.
	Capacitance change ≤±20% of the initial value
	D.F. (tanδ) ≤200% of the initial specified value
	Leakage current ≤The initial specified value

## ◆ DIMENSIONS (Screw-Mount) [mm]

- Terminal Code : LG
- Size Code : L

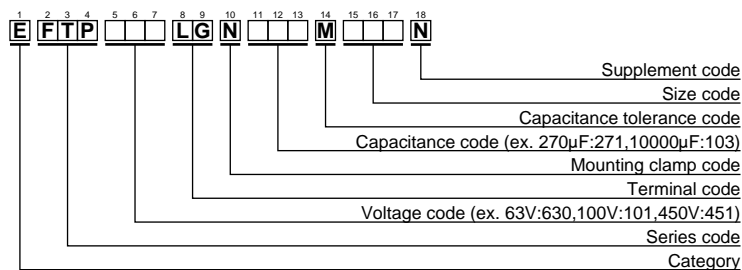


- Size Code : R



<Screw specifications>  
 Plus hexagon-headed screw: M5×0.8  
 Maximum screw tightening torque: 3.23Nm

## ◆ PART NUMBERING SYSTEM



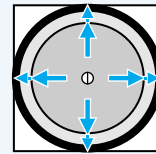
Please refer to "A guide to global code (screw-mount terminal type)"

◆STANDARD RATINGS

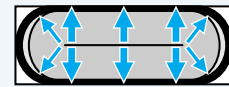
WV (Vdc)	Cap (μF)	Case size H×W×L(mm)	tanδ	Rated ripple current (Arms/85°C,10kHz)	Part No.	WV (Vdc)	Cap (μF)	Case size H×W×L(mm)	tanδ	Rated ripple current (Arms/85°C,10kHz)	Part No.
63	6000	26×70×50	0.25	14.0	EFTP630LGN602ML50N	350	400	26×70×50	0.25	10.6	EFTP351LGN401ML50N
	12000	26×70×75	0.25	19.0	EFTP630LGN123ML75N		800	26×70×75	0.25	15.7	EFTP351LGN801ML75N
	17000	26×70×95	0.25	22.0	EFTP630LGN173ML95N		1100	26×70×95	0.25	18.7	EFTP351LGN112ML95N
	7400	35×64×50	0.25	16.1	EFTP630LGN742MR50N		490	35×64×50	0.25	11.9	EFTP351LGN491MR50N
	15000	35×64×75	0.25	21.7	EFTP630LGN153MR75N		970	35×64×75	0.25	17.6	EFTP351LGN971MR75N
	21000	35×64×95	0.25	25.3	EFTP630LGN213MR95N		1400	35×64×95	0.25	21.0	EFTP351LGN142MR95N
80	4300	26×70×50	0.25	14.0	EFTP800LGN432ML50N	400	330	26×70×50	0.25	10.6	EFTP401LGN331ML50N
	8600	26×70×75	0.25	19.0	EFTP800LGN862ML75N		660	26×70×75	0.25	15.7	EFTP401LGN661ML75N
	12000	26×70×95	0.25	22.0	EFTP800LGN123ML95N		930	26×70×95	0.25	18.7	EFTP401LGN931ML95N
	5300	35×64×50	0.25	16.1	EFTP800LGN532MR50N		400	35×64×50	0.25	11.9	EFTP401LGN401MR50N
	10000	35×64×75	0.25	21.7	EFTP800LGN103MR75N		800	35×64×75	0.25	17.6	EFTP401LGN801MR75N
	15000	35×64×95	0.25	25.3	EFTP800LGN153MR95N		1100	35×64×95	0.25	21.0	EFTP401LGN112MR95N
100	2900	26×70×50	0.25	14.0	EFTP101LGN292ML50N	450	270	26×70×50	0.25	10.1	EFTP451LGN271ML50N
	5700	26×70×75	0.25	19.0	EFTP101LGN572ML75N		540	26×70×75	0.25	15.0	EFTP451LGN541ML75N
	8100	26×70×95	0.25	22.0	EFTP101LGN812ML95N		760	26×70×95	0.25	18.0	EFTP451LGN761ML95N
	3600	35×64×50	0.25	16.1	EFTP101LGN362MR50N		330	35×64×50	0.25	11.4	EFTP451LGN331MR50N
	7100	35×64×75	0.25	21.7	EFTP101LGN712MR75N		660	35×64×75	0.25	16.7	EFTP451LGN661MR75N
	10000	35×64×95	0.25	25.3	EFTP101LGN103MR95N		930	35×64×95	0.25	20.1	EFTP451LGN931MR95N

◆Improvement of space factor and heat radiation

Dead spaces are found for the conventional cylindrical shape. But lower profile offers small dead spaces, and makes the equipments smaller in size. Moreover, the internal element of the lower profile capacitor is widely touched to the can. This largely improves the heat radiation compared to the cylindrical shape.



Cylindrical shape



FTP series