

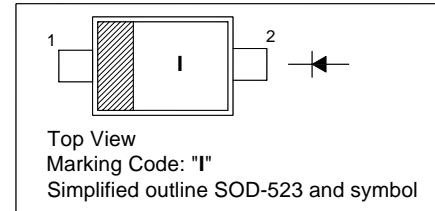
# 1N6263WT

## SILICON SCHOTTKY BARRIER DIODE

for general purpose applications

### PINNING

PIN	DESCRIPTION
1	Cathode
2	Anode

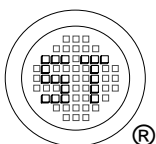


### Absolute Maximum Ratings ( $T_a = 25\text{ }^\circ\text{C}$ )

Parameter	Symbol	Value	Unit
Peak Reverse Voltage	$V_{RRM}$	40	V
Power Dissipation	$P_{tot}$	400	mW
Max. Single Cycle Surge Forward Current (10 s Square wave)	$I_{FSM}$	2	A
Junction Temperature	$T_j$	150	$^\circ\text{C}$
Storage Temperature Range	$T_s$	- 55 to + 150	$^\circ\text{C}$

### Characteristics at $T_a = 25\text{ }^\circ\text{C}$

Parameter	Symbol	Min.	Max.	Unit
Reverse Breakdown Voltage at $I_R = 10\text{ }\mu\text{A}$	$V_{(BR)R}$	40	-	V
Forward Voltage at $I_F = 1\text{ mA}$ at $I_F = 15\text{ mA}$	$V_F$	- -	0.39 0.9	v
Reverse Leakage Current at $V_R = 30\text{ V}$	$I_R$	-	200	nA
Junction Capacitance at $V_R = 0\text{ V}$ , $f = 1\text{ MHz}$	$C_{tot}$	-	2.2	pF
Reverse Recovery Time at $I_F = I_R = 5\text{ mA}$ , recover to $0.1 I_R$	$t_{rr}$	-	1	ns



**SEMTECH ELECTRONICS LTD.**

(Subsidiary of Sino-Tech International Holdings Limited, a company  
listed on the Hong Kong Stock Exchange, Stock Code: 724)



ISO/TS 16949 : 2002  
Certificate No. 05103



ISO 14001:2004  
Certificate No. 7116



ISO 9001:2000  
Certificate No. 0506098

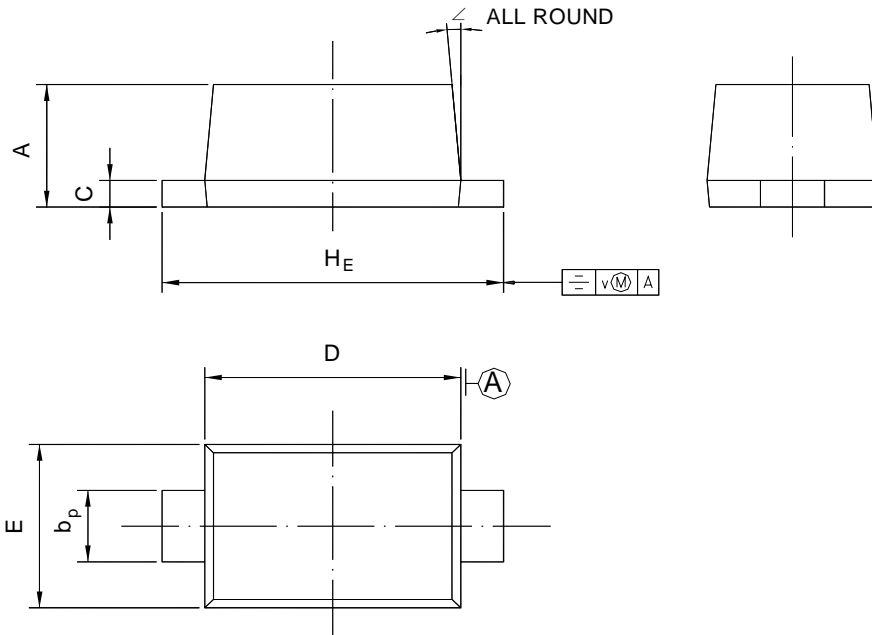
Dated : 23/11/2006

# 1N6263WT

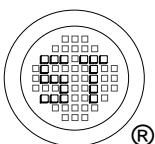
## PACKAGE OUTLINE

Plastic surface mounted package; 2 leads

SOD-523



UNIT	A	b <sub>p</sub>	C	D	E	H <sub>E</sub>	V	∠
mm	0.70 0.60	0.4 0.3	0.135 0.127	1.25 1.15	0.85 0.75	1.7 1.5	0.1	5°



**SEMTECH ELECTRONICS LTD.**  
 (Subsidiary of Sino-Tech International Holdings Limited, a company listed on the Hong Kong Stock Exchange, Stock Code: 724)



ISO/TS 16949 : 2002 Certificate No. 05103  
 ISO 14001:2004 Certificate No. 7116  
 ISO 9001:2000 Certificate No. 0506098

Dated : 23/11/2006