

# Distinctive Characteristics

Optional caps in different colors to vary appearance as needed.

Low operating force for ease of actuation.

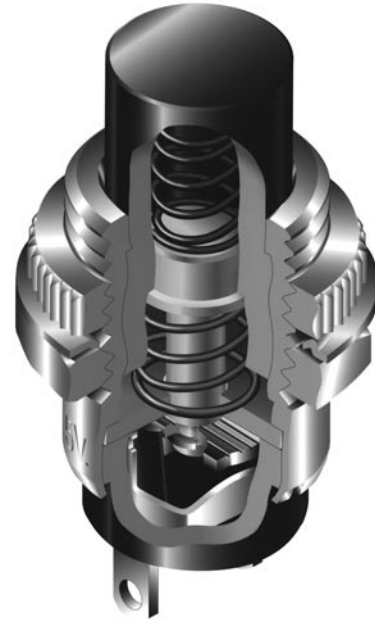
Rear panel bushing mount with compact behind panel dimension.

Internal antijamming feature to protect the contacts from damage due to excessive force on the plunger.

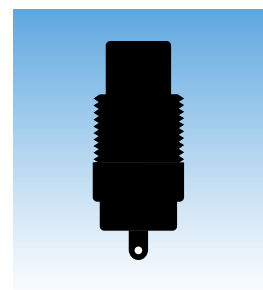
Low cost device of rugged one-piece bushing and housing construction.

Reliability of construction with an internal guide to maintain contact alignment.

Epoxy sealed terminals.



Actual Size



## General Specifications

### Electrical Capacity (Resistive Load)

**Power Level:** 3A @ 125V AC or 2A @ 250V AC or 2A @ 30V DC for silver  
**Logic Level:** 0.4VA max. @ 28V AC/DC max. for gold  
 (Applicable Range 0.1mA ~ 0.1A @ 20mV ~ 28V)  
 Note: Find additional explanation of operating range in Supplement section.

### Other Ratings

**Contact Resistance:** 10 milliohms maximum for silver;  
20 milliohms maximum for gold  
**Insulation Resistance:** 200 megohms minimum @ 500V DC  
**Dielectric Strength:** 1,000V AC minimum between contacts & between contacts & case for 1 minute minimum  
**Mechanical Life:** 30,000 operations minimum  
**Electrical Life:** 10,000 operations minimum  
**Nominal Operating Force:** 4.90N  
**Travel:** Normally Open  
                   Total Travel .088" (2.24mm)  
                   Normally Closed  
                   Total Travel .088" (2.24mm)

### Materials & Finishes

**Plunger:** Phenolic resin  
**Bushing:** Brass with nickel plating  
**Case:** Phenolic resin  
**Movable Contactor:** Copper with silver or gold plating  
**Stationary Contacts:** Copper with silver or gold plating  
**Terminals:** Copper with silver or gold plating

### Environmental & Installation Data

**Operating Temp Range:** -10°C through +70°C (+14°F through +158°F)  
**Soldering Time & Temperature:** Manual Soldering:  
See Profile A in Supplement section.

### Standards & Certifications



**UL Recognized:** Models rated 3A @ 125V AC & 2A @ 250V AC.  
 Single pole: Momentary action circuit with solder lug terminations.  
 UL File Number: WOYR2.E44145; add "/U" to end of part number to order UL mark on switch.



**C-UL Recognized:** Models rated 3A @ 125V AC & 2A @ 250V AC. Single pole: Momentary action circuit with solder lug terminations. C-UL File Number: WOYR8.E44145; add "/C-UL" to end of part number to order C-UL mark on switch.



**CSA Certified:** Models rated 3A @ 125V AC & 2A @ 250V AC. Single pole: Momentary action circuit with solder lug terminations. CSA File Number: 023535-0-000; add "/C" to end of part number to order CSA mark on switch.

### TYPICAL SWITCH ORDERING EXAMPLE

**SB40**    **11NO**    **M**               

**POLE & CIRCUITS**

**Normally Open**

<b>11NO</b>	SPST	OFF	(ON)
-------------	------	-----	------

**Normally Closed**

<b>11NC</b>	SPST	ON	(OFF)
-------------	------	----	-------

( ) = Momentary

**PLUNGER COLORS**

<b>No Code</b>	Black
<b>C</b>	Red

**CONTACT MATERIALS & RATINGS**

<b>No Code</b>	Silver Contacts 3A @ 125V AC or 2A @ 250V DC
<b>G</b>	Gold Contacts 0.4VA max. @ 28V AC/DC max.

**BUSHINGS**

<b>M</b>	Metric Threaded M12 P1
<b>H</b>	Inch Threaded 15/32-32 NS

**SLIP-ON CAP & COLORS**

<b>No Code</b>	Without Cap
<b>2A</b>	Black
<b>2B</b>	White
<b>2C</b>	Red
<b>2E</b>	Yellow
<b>2F</b>	Green
<b>2G</b>	Blue

**IMPORTANT:**

Switches are supplied without UL, C-UL & CSA markings unless specified. Specific models & ratings are noted on General Specifications page.

### DESCRIPTION FOR TYPICAL ORDERING EXAMPLE

#### SB4011NOM



### POLE & CIRCUITS

Pole	Model	Plunger Position ( ) = Momentary		Connected Terminals		Throw & Switch Schematics
		Normal	Down	Normal	Down	
SP	<b>SB4011NO</b>	OFF	(ON)	OPEN	1-2	Note: Terminal numbers are not actually on the switch. SPST NO  NC
	<b>SB4011NC</b>	ON	(OFF)	1-2	OPEN	

### TYPICAL SWITCH DIMENSIONS

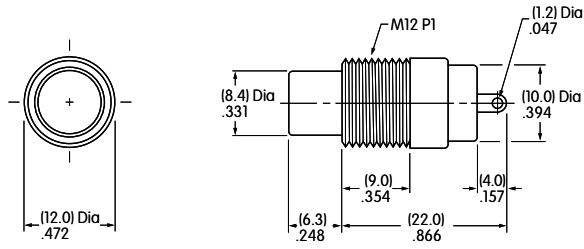
#### Metric Bushing



**SB4011NOM**

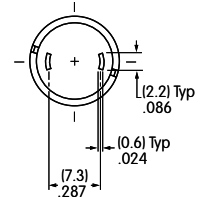
- Hardware provided:
- 1 AT504 Knurled Face Nut
  - 1 AT508 Lockwasher
  - 1 AT527M Hex Mounting Nut

Details in Hardware & Accessories section.

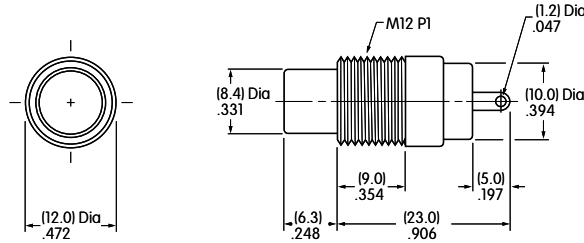


**SB4011NOM**

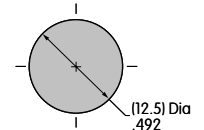
#### Metric Bushing



Panel Thickness:  
.157" (4.0mm)



**SB4011NCM**



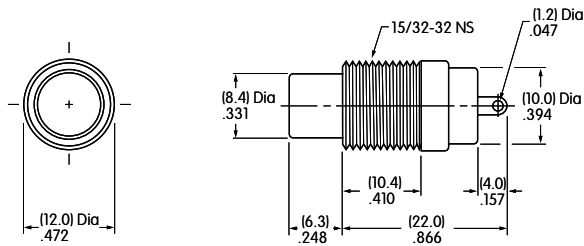
#### Inch Bushing



**SB4011NCH**

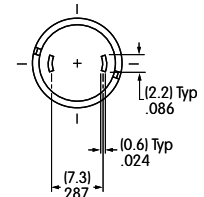
- Hardware provided:
- 2 AT503H Hex Mounting Nuts
  - 1 AT508 Lockwasher

Details in Hardware & Accessories section.

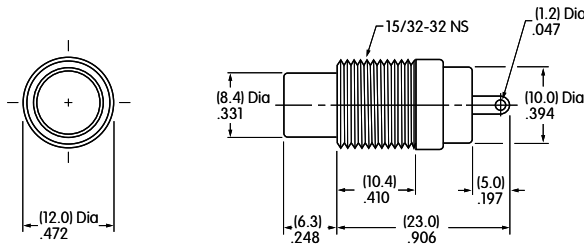


**SB4011NOH**

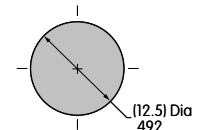
#### Inch Bushing



Panel Thickness:  
.157" (4.0mm)



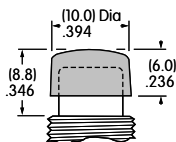
**SB4011NCH**



### SLIP-ON CAP & COLORS

**AT422**  
.394" (10.0mm) Diameter Cap

Material: Polyethylene  
Finish: Matte



**2A**

Black

**2C**

Red

**2F**

Green

**2B**

White

**2E**

Yellow

**2G**

Blue