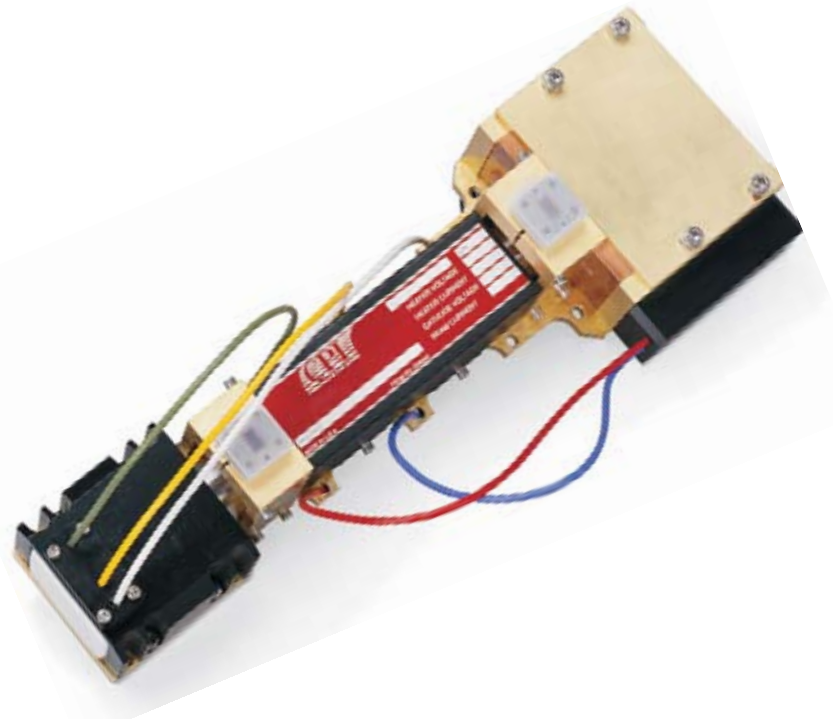


Millimeter Wave Coupled Cavity TWT Series

The VTA-6430A Series are a 500W CW Coupled-Cavity Traveling-Wave Tube covering 28.35-31.00 GHz (Ka-Band) with 1 GHz Instantaneous bandwidth, Periodic-Permanent-Magnet Focused, WG-28 (compatible with UG-599/U) Waveguide Input, WG-28 (compatible with UG-599/U) Waveguide Output, and Conduction Cooled. This high-efficiency CC TWT is designed for use in satellite communication amplifiers.

Custom configurations are also available. These variations in the performance and configuration include: cooling method (affects average power level), mechanical configuration, and electrical and rf connections.



MODEL NUMBER
VTA-64390A1

FREQUENCY (GHZ)
30.0-31.0 GHz

POWER OUTPUT (Min.)
500 W CW

| TYPICAL OPERATING PARAMETERS | | | | |
|------------------------------|------------|-------|------------------|---------|
| | Parameters | Units | Maximum | Minimum |
| Filament Voltage | EF | Vdc | 6.40 | 6.20 |
| Filament Current | If | Adc | 1.6 (Surge: 5.0) | 1.0 |
| Focus Electrode Voltage | Efe | Vdc | -6.3 | -100 |
| Beam Voltage | Ew | kVdc | 14.5 | 13.5 |
| Cathode Current | Ik | mAdc | 350 | --- |
| Body Current | Iw | mAdc | 6.0 | --- |
| Collector Voltage No. 1 | Eb1 | %Ew | 36.0 | 34.0 |
| Collector Voltage No. 2 | Eb2 | %Ew | 13.5 | 11.5 |
| Collector Current No. 1 | Ib1 | mA | 100 | --- |
| Collector Current No. 2 | Ib2 | mA | 350 | --- |
| Filament Warm-up Time | | min. | 3.0 | --- |

- | FEATURES |
|--|
| • 500 W CW |
| • 28.35-31.00 GHz |
| • 1 GHz Instantaneous Bandwidth |
| • PPM Focusing |
| • Waveguide Input and Output |
| • Vertical or Horizontal Mounting Position |
| • Weight: 10.0 lb. |
| • Conduction Cooled |

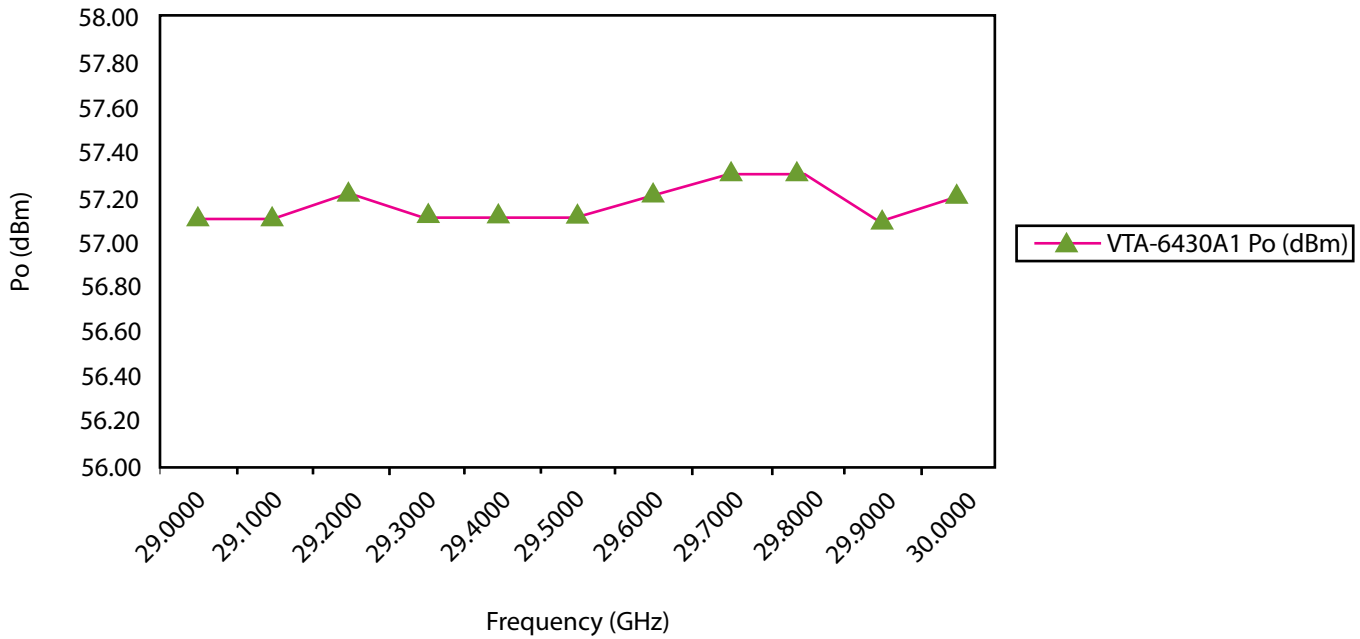
The values listed above represent specified limits for the product and are subject to change. The data should be used for basic information only. Formal, controlled specifications may be obtained from CPI for use in equipment design.



For information on this and other CPI products, visit our website at: www.cpii.com, or contact: CPI MPP Division, 607 Hansen Way, Palo Alto, CA 94303
TELEPHONE: 1(800) 414-8823. **FAX:** (650) 856-0705 | **EMAIL:** marketing@cpii.com

Millimeter Wave Coupled Cavity TWT Series

VTA-6430A1 Po (dBm)



The values listed above represent specified limits for the product and are subject to change. The data should be used for basic information only. Formal, controlled specifications may be obtained from CPI for use in equipment design.



For information on this and other CPI products, visit our website at: www.cpii.com, or contact: CPI MPP Division, 607 Hansen Way, Palo Alto, CA 94303
TELEPHONE: 1(800) 414-8823. **FAX:** (650) 856-0705 | **EMAIL:** marketing@cpii.com