

# RADIAL CHOKE COIL

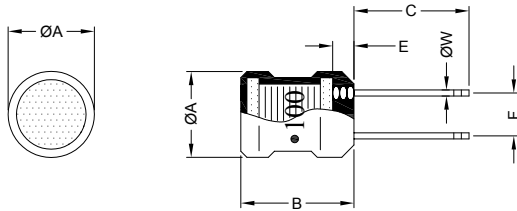
RCB0810 SERIES

## 1. PART NO. EXPRESSION :

R C B 0 8 1 0 1 R 5 M Z F  
 (a) (b) (c) (d)(e)(f)

- (a) Series code
- (b) Dimension code
- (c) Inductance code : 1R5 = 1.5uH
- (d) Tolerance code : K = ±10%, M = ±20%
- (e) X, Y, Z : Standard part
- (f) F : Lead Free

## 2. CONFIGURATION & DIMENSIONS :

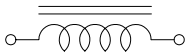


Marking :  
 " ● " : Start

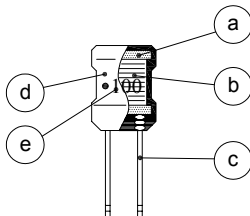
Unit:m/m

ØA	B	C	E	F	ØW
8.7±0.5	10.00±1.0	5.00±1.0	2.50 Max.	5.00±0.8	0.65 Ref.

## 3. SCHEMATIC :



## 4. MATERIALS :



- (a) Core : DR Ferrite Core
- (b) Wire : Enamelled Copper Wire
- (c) Lead : Tinned Copper Wire
- (d) Tube : Shrinkable Tube

## 5. GENERAL SPECIFICATION :

- a) Temp. rise : 20°C Max. at rated current
- b) Storage temp. : -40°C to +125°C
- c) Operating temp. : -40°C to +105°C



RoHS Compliant

NOTE : Specifications subject to change without notice. Please check our website for latest information.

25.04.2008

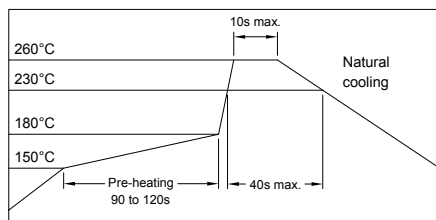


SUPERWORLD ELECTRONICS (S) PTE LTD

### 6. ELECTRICAL CHARACTERISTICS :

Part No.	Inductance ( $\mu$ H )	Test Frequency ( Hz )	Q Ref.	Test Frequency ( Hz )	SRF ( MHz ) Typ.	RDC ( $\Omega$ ) Max.	IDC ( A ) Max.
RCB08101R5MZF	1.5 $\pm$ 20%	1K	30	7.960M	78.0	0.008	5.40
RCB0810ZF2MZF	2.2 $\pm$ 20%	1K	30	7.960M	63.0	0.010	4.50
RCB0810ZF3MZF	3.3 $\pm$ 20%	1K	30	7.960M	50.0	0.018	3.60
RCB0810ZF7MZF	4.7 $\pm$ 20%	1K	30	7.960M	41.0	0.022	3.10
RCB08106R8MZF	6.8 $\pm$ 20%	1K	30	7.960M	33.0	0.028	2.50
RCB0810100KZF	10.0 $\pm$ 10%	1K	60	2.520M	27.0	0.043	2.10
RCB0810150KZF	15.0 $\pm$ 10%	1K	50	2.520M	21.0	0.056	1.70
RCB0810220KZF	22.0 $\pm$ 10%	1K	50	2.520M	17.0	0.086	1.40
RCB0810330KZF	33.0 $\pm$ 10%	1K	45	2.520M	13.0	0.140	1.10
RCB0810470KZF	47.0 $\pm$ 10%	1K	40	2.520M	11.0	0.170	0.96
RCB0810680KZF	68.0 $\pm$ 10%	1K	35	2.520M	9.0	0.280	0.79
RCB0810101KZF	100.0 $\pm$ 10%	1K	55	0.796M	7.2	0.330	0.66
RCB0810151KZF	150.0 $\pm$ 10%	1K	40	0.796M	5.7	0.560	0.53
RCB0810221KZF	220.0 $\pm$ 10%	1K	30	0.796M	4.5	0.720	0.44
RCB0810331KZF	330.0 $\pm$ 10%	1K	25	0.796M	3.6	1.100	0.36
RCB0810471KZF	470.0 $\pm$ 10%	1K	25	0.796M	2.9	1.700	0.30
RCB0810681KZF	680.0 $\pm$ 10%	1K	25	0.796M	2.3	2.300	0.25
RCB0810102KZF	1000.0 $\pm$ 10%	1K	55	0.252M	1.9	4.300	0.20

### RECOMMENDED SOLDERING CONDITIONS REFLOW SOLDERINGS



NOTE : Specifications subject to change without notice. Please check our website for latest information.



**RoHS Compliant**

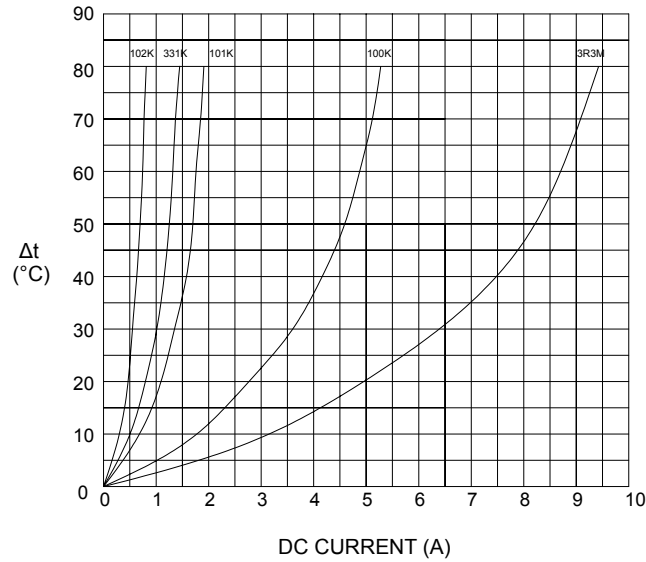
25.04.2008



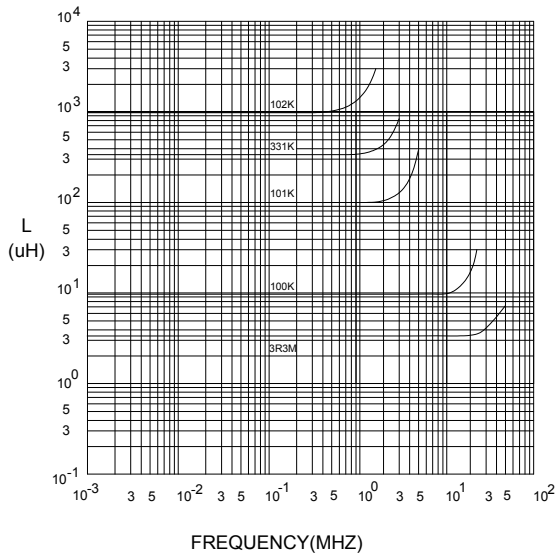
**SUPERWORLD ELECTRONICS (S) PTE LTD**

### 7. CHARACTERISTICS CURVES :

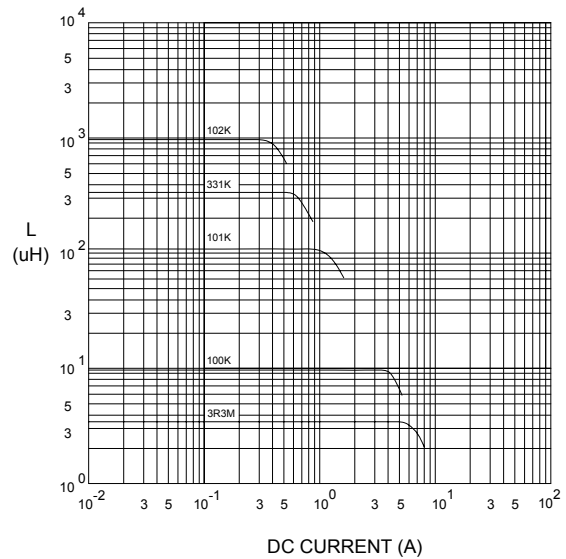
@ TEMP. RISE VS. DC SUPERPOSITION RESPONSE CURVE



@ INDUCTANCE VS. FREQUENCY RESPONSE CURVE



@ INDUCTANCE VS. DC SUPERPOSITION RESPONSE CURVE



**RoHS Compliant**

NOTE : Specifications subject to change without notice. Please check our website for latest information.

25.04.2008



**SUPERWORLD ELECTRONICS (S) PTE LTD**

# RADIAL CHOKE COIL

RCB0810 SERIES

8. UL CARD :

**OBMW2** **November 30, 2000**  
**Magnet Wire - Component**

**PACIFIC ELECTRIC WIRE & CABLE (SHENZHEN) CO LTD** **E201757**  
 607 BAOLONG INDUSTRIAL ESTATE LONGGANG, SHENZHEN  
 GUANGDONG CHINA

Mtl Dsg	Coating Type		ANSI	TI
	BC	TC	Type	
UEW/U	Polyurethane	—	—	130
PEW/U	Polyester	—	MW5-C	155°C
PEWH/U	Modified Polyester	—	MW30-C	180
PEW-NY/U	Polyester	Polyamide	MW24-C	155
HAI/U	Polyester(Amide)(Imide)	Polyamideimide	MW35,73	200
UEW-NY/U	Polyurethane	Polyamide	MW80-C	155
			MW28-C	130

**Marking:** Company name and material designation or marked designation on package or reel, and Recognized Component Mark.

See General Information Preceding These Recognitions

1/3/2001 Underwriters Laboratories Inc. Card 1 of 2

**YDPU8** **August 18, 1999**  
**Tubing Extruded Insulating Certified For Canada - Component**

**SHENZHEN CHANGBAO SPECIAL PLASTIC PRODUCTS CO LTD** **E180908**  
 SHENZHEN SCIENCE & INDUSTRY PARK NAN SHAN  
 SHENZHEN, GUANGDONG 518057 CHINA

Cat. No.	Max V	Max Temp C	Col Recognized	Max Temp Rated Oil Resistance *C	OFT Rated #
<b>Polyolefin heat shrinkable tubing.</b>					
Changbao 102	600	125	All	—	Yes

**#Tubing is considered to comply with the optional OFT flammability requirements only if it is so marked.**

**Marking:** Company name, catalog number and temperature rating in degrees C appears on tubing, tags attached to both ends of the tubing or on the shipping spool label or smallest unit container and the Recognized Component Mark for Canada .

See General Information Preceding These Recognitions  
 For use only in equipment where the acceptability of the combination is determined by Underwriters Laboratories Inc.

8/31/1999 Underwriters Laboratories Inc. Card 1 of 1



**RoHS Compliant**

NOTE : Specifications subject to change without notice. Please check our website for latest information.

25.04.2008



**SUPERWORLD ELECTRONICS (S) PTE LTD**