

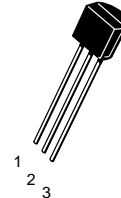
RoHS Compliant Product

A suffix of "-C" specifies halogen & lead-free

FEATURES

High voltage PNP Transistor

TO-92



- 1. EMITTER
- 2. BASS
- 3. COLLECTOR

MAXIMUM RATINGS (T_A=25°C unless otherwise noted)

Symbol	Parameter	Value	Units
V _{CB0}	Collector-Base Voltage	-300	V
V _{CE0}	Collector-Emitter Voltage	-300	V
V _{EBO}	Emitter-Base Voltage	-5	V
I _C	Collector Current -Continuous	-500	mA
P _C	Collector Power Dissipation	625	mW
T _j	Junction Temperature	150	°C
T _{stg}	Storage Temperature	-55-150	°C
R _{eJA}	Thermal Resistance, junction to Ambient	200	°C/mW
R _{eJC}	Thermal Resistance, unction to Case	83.3	°C/mW

ELECTRICAL CHARACTERISTICS (T_{amb}=25°C unless otherwise specified)

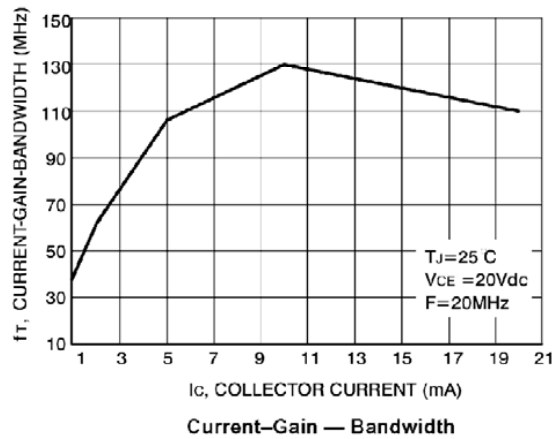
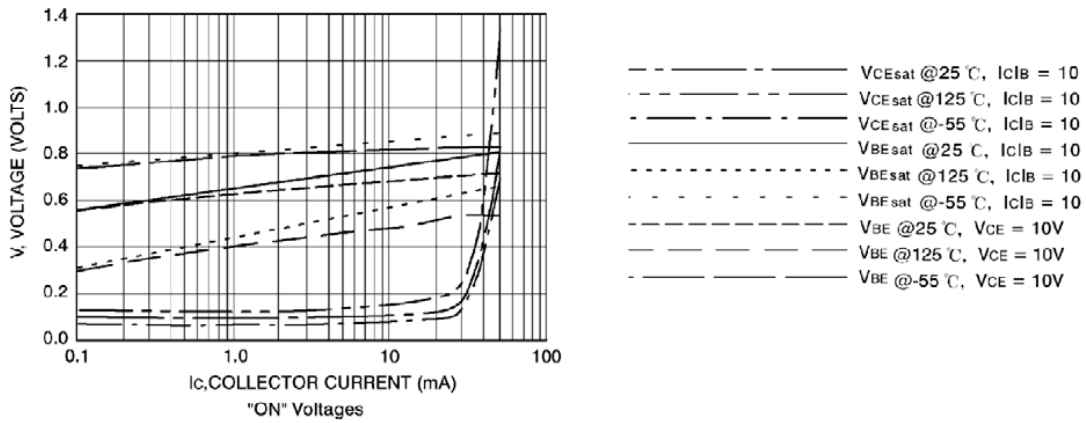
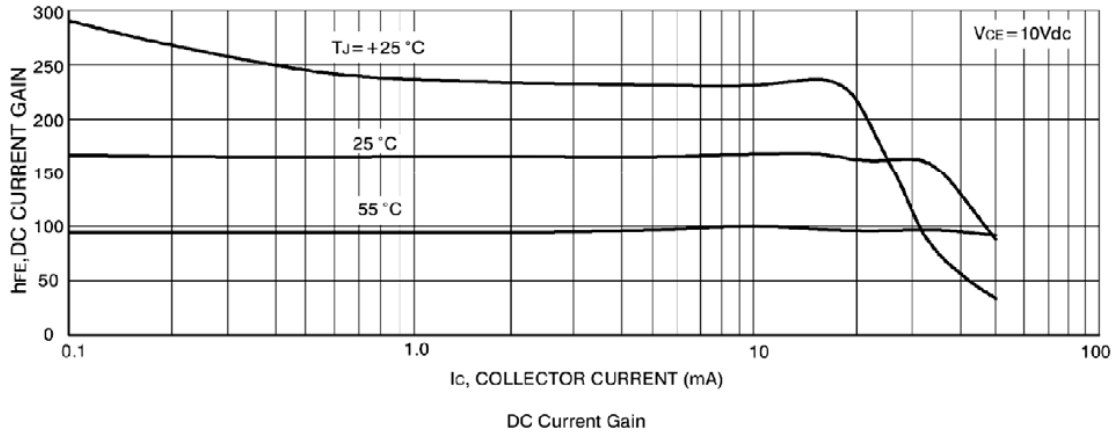
Parameter	Symbol	Test conditions	MIN	TYP	MAX	UNIT
Collector-base breakdown voltage	V _{(BR)CBO}	I _C =-100μA, I _E =0	-300			V
Collector-emitter breakdown voltage	V _{(BR)CEO}	I _C =-1mA, I _B =0	-300			V
Emitter-base breakdown voltage	V _{(BR)EBO}	I _E =-100μA, I _C =0	-5			V
Collector cut-off current	I _{CB0}	V _{CB} = -200 V I _E =0			-0.25	μA
Emitter cut-off current	I _{EBO}	V _{EB} = -5 V, I _C =0			-0.1	μA
DC current gain	h _{FE(1)}	V _{CE} = -10 V, I _C =- 1 mA	60			
	h _{FE(2)}	V _{CE} = -10V, I _C = -10 mA	80		250	
	h _{FE(3)}	V _{CE} = -10 V, I _C = -80 mA	60			
Collector-emitter saturation voltage	V _{CE(sat)}	I _C = -20 mA, I _B = -2 mA			-0.2	V
Base-emitter saturation voltage	V _{BE(sat)}	I _C = -20 mA, I _B = -2 mA			-0.9	V
Transition frequency	f _T	V _{CE} = -20 V, I _C = -10 mA f = 30MHz	50			MHz

CLASSIFICATION OF h_{FE(2)}

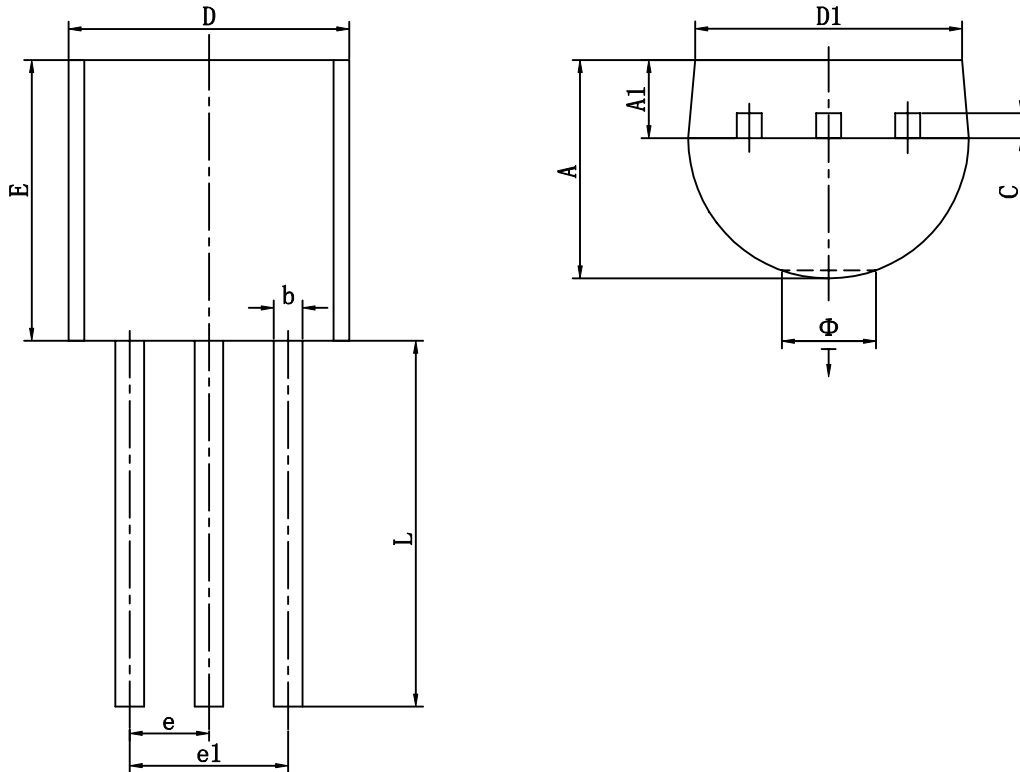
Rank	A	B ₁	B ₂	C
Range	80-100	100-150	150-200	200-250

Typical Characteristics

A92



● TO-92 PACKAGE OUTLINE DIMENSIONS



Symbol	Dimensions In Millimeters		Dimensions In Inches	
	Min	Max	Min	Max
A	3.300	3.700	0.130	0.146
A1	1.100	1.400	0.043	0.055
b	0.380	0.550	0.015	0.022
c	0.360	0.510	0.014	0.020
D	4.400	4.700	0.173	0.185
D1	3.430		0.135	
E	4.300	4.700	0.169	0.185
e	1.270TYP		0.050TYP	
e1	2.440	2.640	0.096	0.104
L	14.100	14.500	0.555	0.571
Ø		1.600		0.063
↓	0.000	0.380	0.000	0.015