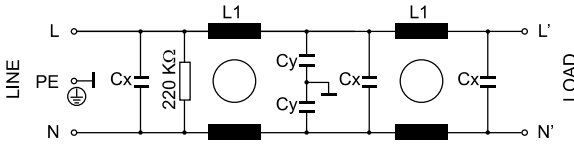


# FFHV

For Single Phase Frequency Inverters

## Electrical schematics



## General Specifications

Maximum operating voltage: 250Vac.

Operating frequency: DC - 60Hz

Hipot test voltage:

L/N→PE: 1800Vac 2s.

L→N: 1700 Vdc 2s.

Application class:

HPF Acc. TO DIN 40040

(-25°C/+85°C/95% RH, 30d).

Flammability class: UL 94 V2.

## For single phase frequency inverters

Double stage filter.

Special high performance for single phase frequency inverters.

Very high attenuation.

## Product List

TYPE	I	L1	CX	CY	HOUSING	L.CURRENT	CONNECTION	WEIGHT ±g
FFHV-6Z	6 Amp	7,8 mH	1 µF	4,7 nF	218	0,45mA	FASTON 6,3mm	380
FFHV-10Z	10 Amp	4,5 mH	1 µF	4,7 nF	271	0,45mA	FASTON 6,3mm	430
FFHV-12Z	12 Amp	3,25 mH	1 µF	4,7 nF	271	0,45mA	FASTON 6,3mm	635
FFHV-16Z	16 Amp	2,8 mH	1 µF	4,7 nF	225	0,45mA	FASTON 6,3mm	985
FFHV-25B	25 Amp	1,6 mH	2,2 µF	33 nF	272	3,19mA	4mm2	1120
FFHV-30B	30 Amp	1,6+0,8 mH	2,2 µF	33 nF	273	3,19mA	6mm2	1300

## Insertion Loss

