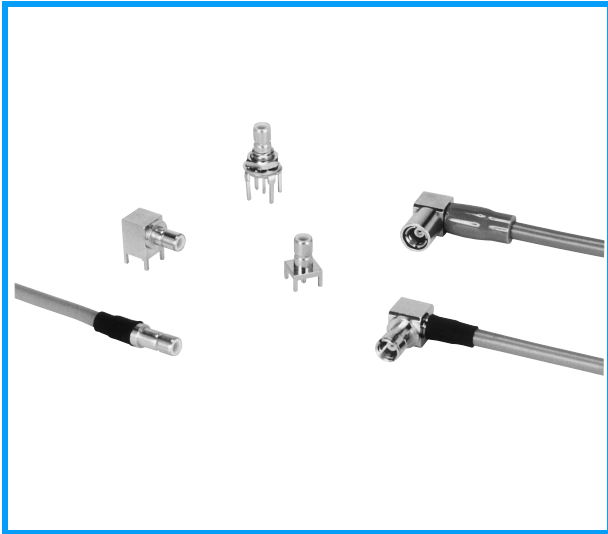


SMB Type Connectors



- 27DP series are connectors produced based on SMB type (Sub-Miniature type B) specified in MIL-C-39012.
- 27DP is super small size coaxial cable connectors for 50 Ω group corresponding to minimization of communication equipment.
- Connection method is push-on type, and fixing method cable is by crimping or soldering.

CONFORMING STANDARD

JIS-C-5415、MIL-C-39012、DSP-C-6205

SPECIFICATION

Characteristic Impedance	50 Ω
Dielectric withstanding voltage	1000V AC (rms) for 1 minute
Insulation resistance	1000M Ω min. at 500V DC
Contact resistance	6m Ω max.
VSWR	1.2max. at DC~2GHz

Specifications depends on each connector although these are basic specifications.

MATERIAL/FINISH

Shell (Body)	Copper alloy/Gold or Nickel plating
Contact (male)	Copper alloy/Gold plating
Contact (female)	Copper alloy/Gold plating
Insulators	PTFE

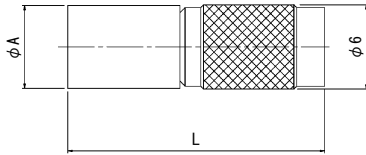
Please ask us for the cable assemblies to assure its performance.

27DP Series

Unit : mm

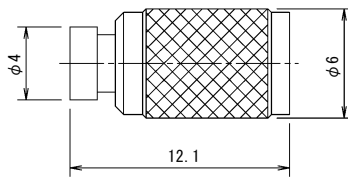
■ Plug

Crimp Type



P/N	Applicable Cable	φ A	L	Finish		Hand Crimp Tool P/N
				Shell	Contact	
27DP-P-1.5QEV-AA	1.5DS-QEHV	4.8	17.5	Ni	Au	CR-H-1160
	1.5D-QEV					
27DP-P-1.5QEW-AA	1.5D-2W	4.8	17.5	Ni	Au	CR-H-1160
	1.5D-QEW					
27DP-P-1.5QEW-AA-D1	1.5D-2W	4.8	17.5	Au	Au	CR-H-1160
	1.5D-QEW					
27DP-SP-1.5DHQS-CR1	1.5D-HQ · SUPER	4.8	18.1	Ni	Au	CR-H-1156
27DP-SP-2.5DHQS-CR1	2.5D-HQ · SUPER	5.9	18.2	Ni	Au	CR-H-1163
27DP-SP-2.5DVS-CR1	2.5D-2VS	5.9	18.3	Ni	Au	CR-H-1163

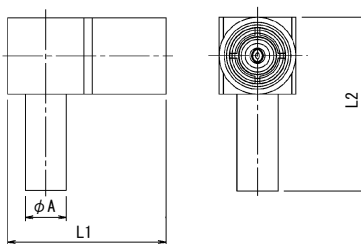
Semi-Flexible Cable Type



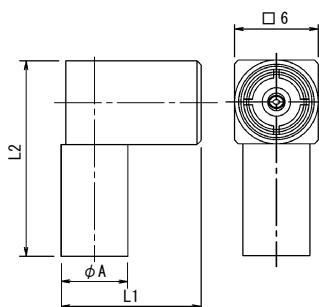
P/N	Applicable Cable	Finish	
		Shell	Contact
27DP-SP-FCCA1-SO	FCCA1G1	Ni	Au

■ Right Angle Plug

Crimp Type



P/N	Applicable Cable	φ A	L1	L2	Finish		Hand Crimp Tool P/N
					Shell	Contact	
27DP-LP-0.8DW-CR1	0.8D-QEW	3.4	13.2	14.4	Ni	Au	CR-H-K0012-04
27DP-LP-1.5QEV-AA	1.5DS-QEHV	4.8	13.2	14.0	Ni	Au	CR-H-1160
	1.5D-QEV						
27DP-LP-1.5QEW-AA	1.5D-QEW	4.8	13.2	14.0	Ni	Au	CR-H-1160
27DP-LP-1.5QEW-AA-D1	1.5D-QEW	4.8	13.2	14.0	Au	Au	CR-H-1160

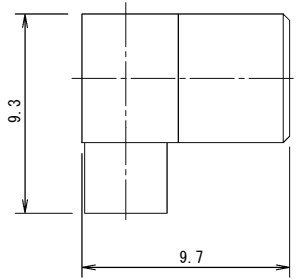


P/N	Applicable Cable	φ A	L1	L2	Finish		Hand Crimp Tool P/N
					Shell	Contact	
27DP-LP-1.5DW-CR1	1.5D-QEW	4.8	10.0	14.0	Ni	Au	CR-H-1156
27DP-LP-1.5DHQS-CR1	1.5D-HQ · SUPER	4.8	10.0	14.0	Ni	Au	CR-H-1156
	1.5D-QEV						
27DP-LP-2.5DHQS-CR1	2.5D-HQ · SUPER	5.9	11.0	14.0	Ni	Au	CR-H-1163
	2.6D-XFV-A						

Unit : mm

■ Right Angle Plug

Semi-Flexible Cable Type



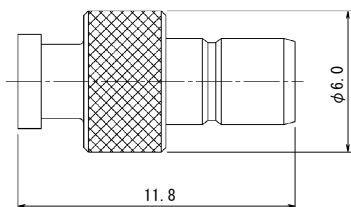
P/N	Applicable Cable	Finish	
		Shell	Contact
27DP-LP-FCCA1-SO-1	FCCA1	Ni	Au

27DP Series

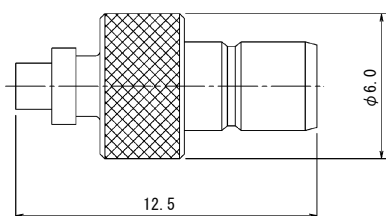
Unit : mm

Jack

Semi-Flexible Cable Type



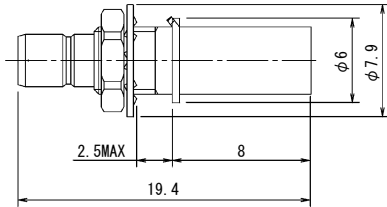
P/N	Applicable Cable	Finish	
		Shell	Contact
27DP-SJ-FCCAV1-SO	FCCAVG1	Ni	Au



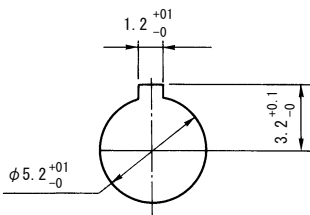
P/N	Applicable Cable	Finish	
		Shell	Contact
27DP-SJ-FCCAV2-SO	FCCAVG2	Ni	Au

■ Bulkhead Jack

Crimp Type

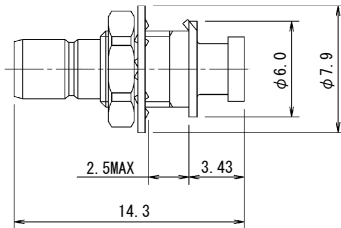


Mounting Hole

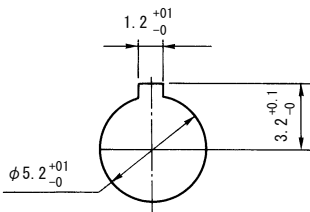


P/N	Applicable Cable	Finish		Hand Crimp Tool P/N
		Shell	Contact	
27DP-BJ-1.5DW-CR1	1.5D-QEW	Ni	Au	CR-H-1156

Semi-Flexible Cable Type



Mounting Hole

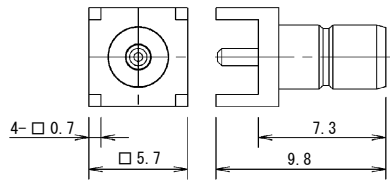


P/N	Applicable Cable	Finish	
		Shell	Contact
27DP-BJ-FCCAV1-SO	FCCAVG1	Ni	Au

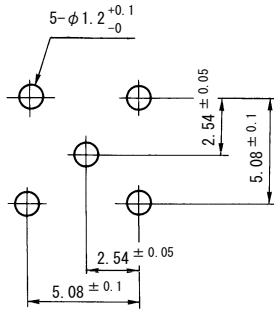
27DP Series

Unit : mm

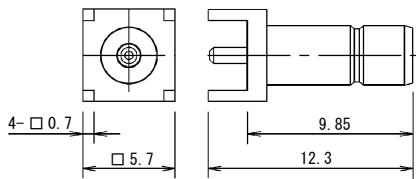
Receptacle



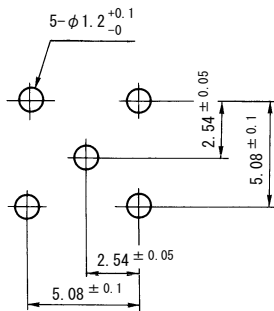
PCB Mounting Dimensions



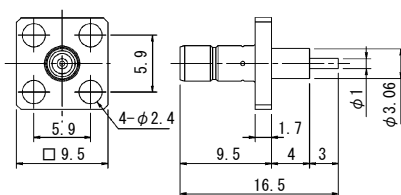
P/N	Finish	
	Shell	Contact
27DP-SR-PC-1	Ni	Au



PCB Mounting Dimensions

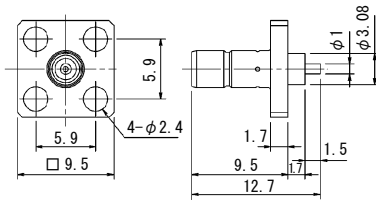


P/N	Finish	
	Shell	Contact
27DP-SR-PC-5	Ni	Au

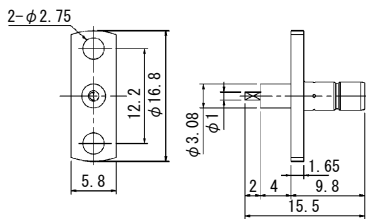


P/N	Finish	
	Shell	Contact
27DP-SR-1	Ni	Au

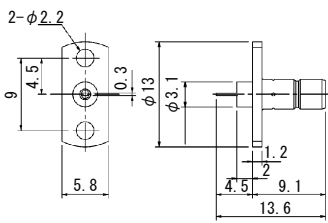
■ Receptacle



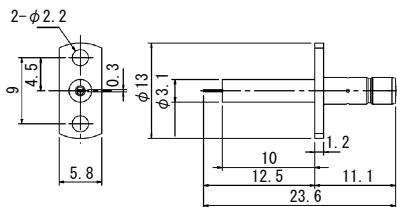
P/N	Finish	
	Shell	Contact
27DP-SR-2	Ni	Au



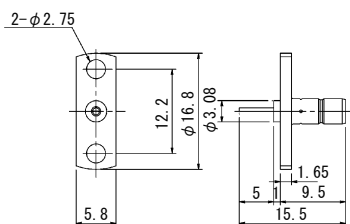
P/N	Finish	
	Shell	Contact
27DP-SR2-3	Ni	Au



P/N	Finish	
	Shell	Contact
27DP-SR2-14	Ni	Au



P/N	Finish	
	Shell	Contact
27DP-SR2-16	Ni	Au

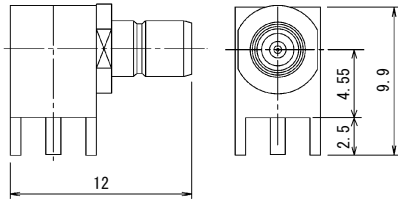


P/N	Finish	
	Shell	Contact
27DP-SR2-17	Ni	Au

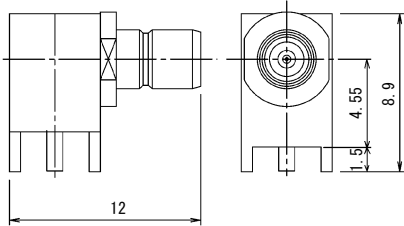
27DP Series

Unit : mm

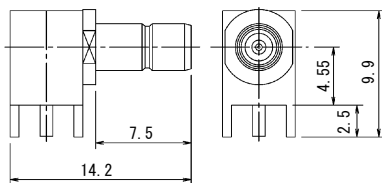
Right Angle Receptacle



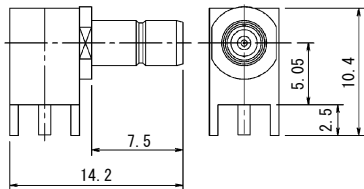
P/N	Finish	
	Shell	Contact
27DP-LR-PC-1	Ni	Au
27DP-LR-PC-1-D1	Au	Au



P/N	Finish	
	Shell	Contact
27DP-LR-PC-5	Ni	Au

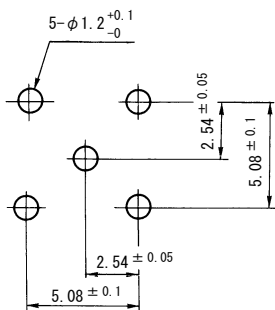


P/N	Finish	
	Shell	Contact
27DP-LR-PC-10	Ni	Au

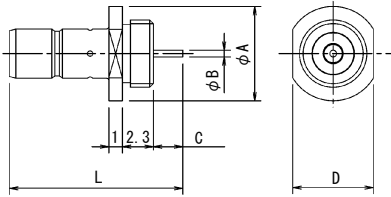


P/N	Finish	
	Shell	Contact
27DP-LR-PC-11	Ni	Au

PCB Mounting Dimensions

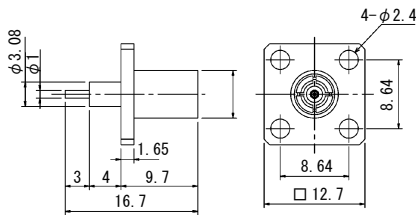


■ Bulkhead Receptacle

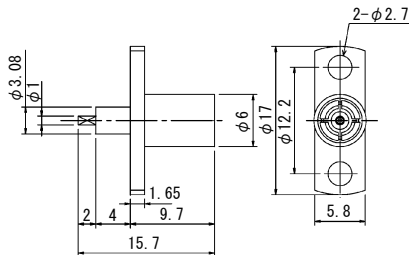


P/N	φ A	φ B	C	D	L	Finish	
						Shell	Contact
27DP-BR-9	7.0	0.5	2.2	6.0	12.9	Ni	Au
27DP-BR-11	6.2	0.8	3.0	5.4	13.7	Ni	Au

■ Plug Receptacle

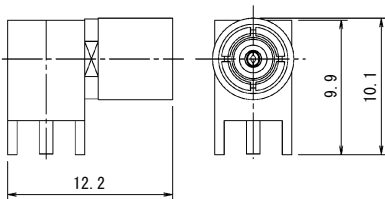


P/N	Finish	
	Shell	Contact
27DP-PR-1	Ni	Au



P/N	Finish	
	Shell	Contact
27DP-PR2-2	Ni	Au

■ Right Angle Plug Receptacle



P/N	Finish	
	Shell	Contact
27DP-LPR-PC	Ni	Au

PCB Mounting Dimensions

