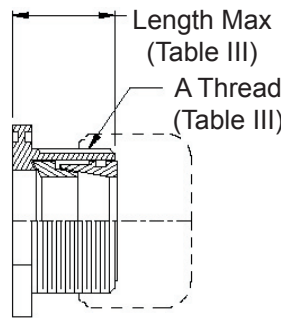
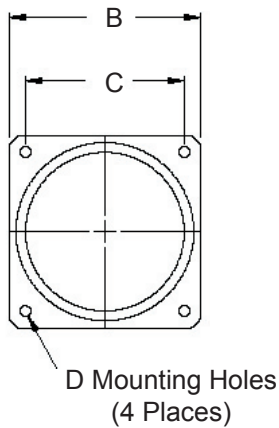
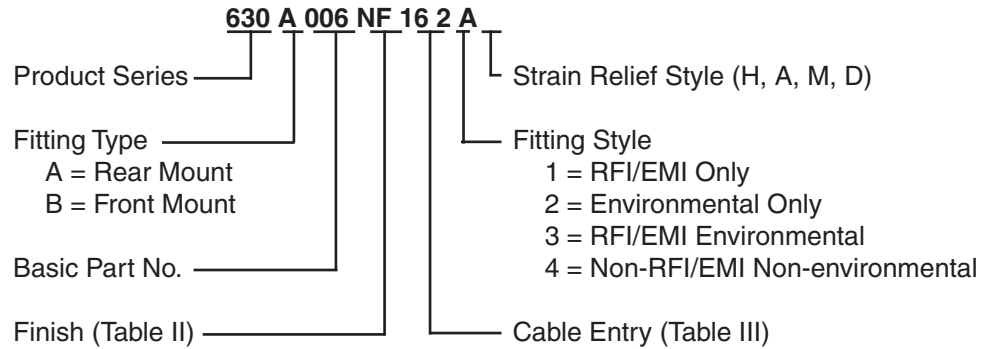
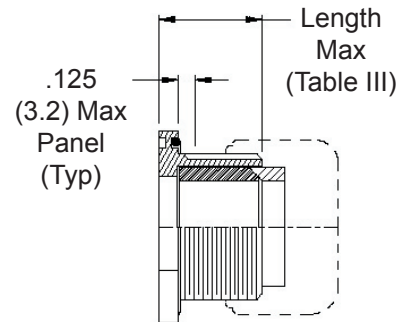


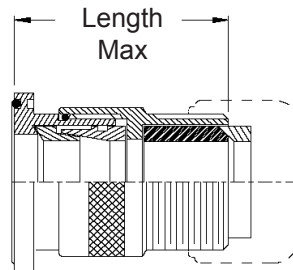
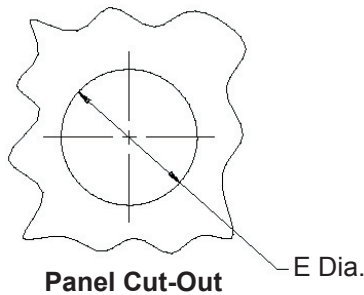
**Single Overall
EMI/RFI
Shield
Termination**



**Style 1 - RFI/EMI
Type B - Front Mount**



**Style 2 - Environmental
Type A - Rear Mount**



**Style 3 -
RFI/EMI Environmental
Type B - Front Mount**

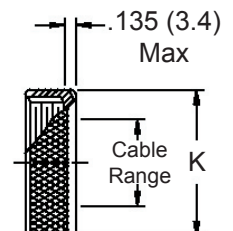
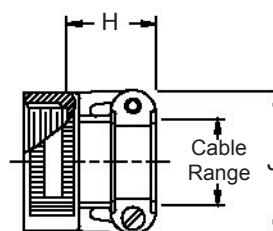
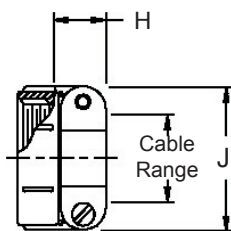
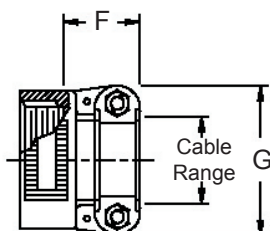
1. Metric dimensions (mm) are indicated in parentheses.
2. Cable range is defined as the accommodations range for the wire bundle or cable. Dimensions shown are not intended for inspection criteria.

STYLE H
Heavy Duty

STYLE A
Medium Duty

STYLE M
Medium Duty

STYLE D
Medium Duty



**EMI/RFI Environmental Bulkhead Feed-Through
with Strain Relief
Front and Rear Panel Mount - Straight**



See inside back cover fold-out or page 14 for Table II.

TABLE III: CABLE ENTRY

Dash No.	Clamp Style	Clamp Size	Cable Range		A Thread Unified	B Dim	C Sq. ± .010 (± .3)	D Dia -.000		E Dia					
			Min	Max				+ .015	(+ .4)	± .010	(±.25)				
01	1,2,4	03*	.157	(4.0)	.250	(6.4)	1/2 -28	.885	(22.5)	.593	(15.1)	.120	(3.0)	.515	(13.1)
02	3	03*	.157	(4.0)	.250	(6.4)	1/2 -28	.885	(22.5)	.593	(15.1)	.120	(3.0)	.515	(13.1)
03	1,2,4	04*	.187	(4.7)	.312	(7.9)	5/8 -24	1.104	(28.0)	.812	(20.6)	.120	(3.0)	.640	(16.3)
04	3	04*	.187	(4.7)	.312	(7.9)	5/8 -24	1.104	(28.0)	.812	(20.6)	.120	(3.0)	.640	(16.3)
05	1,2,4	06*	.281	(7.1)	.437	(11.1)	3/4 -20	1.197	(30.4)	.906	(23.0)	.120	(3.0)	.765	(19.4)
06	3	06*	.281	(7.1)	.437	(11.1)	3/4 -20	1.197	(30.4)	.906	(23.0)	.120	(3.0)	.765	(19.4)
07	1,2,4	08	.344	(8.7)	.562	(14.3)	7/8 -20	1.291	(32.8)	.968	(24.6)	.120	(3.0)	.890	(22.6)
08	3	08	.344	(8.7)	.562	(14.3)	7/8 -20	1.291	(32.8)	.968	(24.6)	.120	(3.0)	.890	(22.6)
09	1,2,4	10	.375	(9.5)	.625	(15.9)	1 -20	1.385	(35.2)	1.062	(27.0)	.120	(3.0)	1.015	(25.8)
10	3	10	.375	(9.5)	.625	(15.9)	1 -20	1.385	(35.2)	1.062	(27.0)	.120	(3.0)	1.015	(25.8)
11	1,2,4	12	.438	(11.1)	.750	(19.1)	1 3/16 -18	1.635	(41.5)	1.250	(31.8)	.120	(3.0)	1.202	(30.5)
12	3	12	.438	(11.1)	.750	(19.1)	1 3/16 -18	1.635	(41.5)	1.250	(31.8)	.120	(3.0)	1.202	(30.5)
13	1,2,4	16	.625	(15.9)	.937	(23.8)	1 7/16 -18	1.760	(44.7)	1.375	(34.9)	.147	(3.7)	1.452	(36.9)
14	3	16	.625	(15.9)	.937	(23.8)	1 7/16 -18	1.760	(44.7)	1.375	(34.9)	.147	(3.7)	1.452	(36.9)
15	1,2,4	20	.875	(22.2)	1.250	(31.8)	1 3/4 -18	2.010	(51.1)	1.562	(39.7)	.147	(3.7)	1.765	(44.8)
16	3	20	.875	(22.2)	1.250	(31.8)	1 3/4 -18	2.010	(51.1)	1.562	(39.7)	.147	(3.7)	1.765	(44.8)
17	1,2,4	24	1.000	(25.4)	1.375	(34.9)	2 -18	2.260	(57.4)	1.750	(44.5)	.173	(4.4)	2.015	(51.2)
18	3	24	1.000	(25.4)	1.375	(34.9)	2 -18	2.260	(57.4)	1.750	(44.5)	.173	(4.4)	2.015	(51.2)
19	1,2,4	28	1.250	(31.8)	1.625	(41.3)	2 1/4 -16	2.510	(63.8)	1.938	(49.2)	.173	(4.4)	2.265	(57.5)
20	3	28	1.250	(31.8)	1.625	(41.3)	2 1/4 -16	2.510	(63.8)	1.938	(49.2)	.173	(4.4)	2.265	(57.5)
21	1,2,4	32*	1.437	(36.5)	1.875	(47.6)	2 1/2 -16	2.781	(70.6)	2.188	(55.6)	.173	(4.4)	2.515	(63.9)
22	3	32*	1.437	(36.5)	1.875	(47.6)	2 1/2 -16	2.781	(70.6)	2.188	(55.6)	.173	(4.4)	2.515	(63.9)
23	1,2,4	40*	1.875	(47.6)	2.375	(60.3)	3 -16	3.281	(83.3)	2.625	(66.7)	.173	(4.4)	3.015	(76.6)
24	3	40*	1.875	(47.6)	2.375	(60.3)	3 -16	3.281	(83.3)	2.625	(66.7)	.173	(4.4)	3.015	(76.6)

* Not Available in Style M Clamp

TABLE III (Continued)

Dash No.	Style	F Max	G Max	H Max	J Max	K Max	Length Max						
01	1,2,4	---	---	.760	(19.3)	.843	(21.4)	.630	(16.0)	.971	(24.7)		
02	3	---	---	.760	(19.3)	.843	(21.4)	.630	(16.0)	1.820	(46.2)		
03	1,2,4	.780	(19.8)	.957	(24.3)	.760	(19.3)	.906	(23.0)	.755	(19.2)	.971	(24.7)
04	3	.780	(19.8)	.957	(24.3)	.760	(19.3)	.906	(23.0)	.755	(19.2)	1.820	(46.2)
05	1,2,4	.780	(19.8)	1.145	(29.1)	.760	(19.3)	1.093	(27.8)	.942	(23.9)	.971	(24.7)
06	3	.780	(19.8)	1.145	(29.1)	.760	(19.3)	1.093	(27.8)	.942	(23.9)	1.820	(46.2)
07	1,2,4	.780	(19.8)	1.332	(33.8)	.760	(19.3)	1.187	(30.1)	1.067	(27.1)	.971	(24.7)
08	3	.780	(19.8)	1.332	(33.8)	.760	(19.3)	1.187	(30.1)	1.067	(27.1)	1.820	(46.2)
09	1,2,4	.780	(19.8)	1.332	(33.8)	.760	(19.3)	1.281	(32.5)	1.192	(30.3)	.971	(24.7)
10	3	.780	(19.8)	1.332	(33.8)	.760	(19.3)	1.281	(32.5)	1.192	(30.3)	1.820	(46.2)
11	1,2,4	.811	(20.6)	1.551	(39.4)	.760	(19.3)	1.500	(38.1)	1.380	(35.1)	1.031	(26.2)
12	3	.811	(20.6)	1.551	(39.4)	.760	(19.3)	1.500	(38.1)	1.380	(35.1)	1.820	(46.2)
13	1,2,4	.905	(23.0)	1.770	(45.0)	1.073	(27.3)	1.719	(43.7)	1.535	(39.0)	1.031	(26.2)
14	3	.905	(23.0)	1.770	(45.0)	1.073	(27.3)	1.719	(43.7)	1.535	(39.0)	1.820	(46.2)
15	1,2,4	1.092	(27.7)	2.113	(53.7)	1.323	(33.6)	2.062	(52.4)	1.848	(46.9)	1.031	(26.2)
16	3	1.092	(27.7)	2.113	(53.7)	1.323	(33.6)	2.062	(52.4)	1.848	(46.9)	1.820	(46.2)
17	1,2,4	1.124	(28.5)	2.363	(60.0)	1.323	(33.6)	2.312	(58.7)	2.255	(57.3)	1.095	(27.8)
18	3	1.124	(28.5)	2.363	(60.0)	1.323	(33.6)	2.312	(58.7)	2.255	(57.3)	1.820	(46.2)
19	1,2,4	1.399	(35.5)	2.770	(70.4)	1.572	(39.9)	2.719	(69.1)	2.505	(63.6)	1.095	(27.8)
20	3	1.399	(35.5)	2.770	(70.4)	1.572	(39.9)	2.719	(69.1)	2.505	(63.6)	1.820	(46.2)
21	1,2,4	1.399	(35.5)	3.020	(76.7)	1.572	(39.9)	2.969	(75.4)	2.755	(70.0)	1.095	(27.8)
22	3	1.399	(35.5)	3.020	(76.7)	1.572	(39.9)	2.969	(75.4)	2.755	(70.0)	1.940	(49.3)
23	1,2,4	---	---	---	---	1.572	(39.9)	3.531	(89.7)	3.255	(82.7)	1.220	(31.0)
24	3	---	---	---	---	1.572	(39.9)	3.531	(89.7)	3.255	(82.7)	2.060	(52.3)