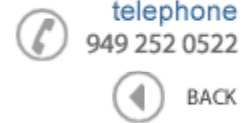




Data Sheet



Product Category: Filters

Series Number	Package	Description	Last Modified
736	Ceramic LT/U	455 KHz 4 Element	Jan. 01 2008

Filter FEATURES

- AM use
- IF filter
- 4 element
- RoHS Compliant



OPERATING CONDITIONS / ELECTRICAL CHARACTERISTICS / PART NUMBER GUIDE

PART NO.	6dB Bandwidth	40dB Bandwidth	Pass Band Ripple	Spurious Attenuation fn ± 100 KHz	Insertion Loss	In/Output Impedance
	KHz min.	KHz max.	dB max.	dB min.	dB max.	Kohm
736-459-AU	± 17	± 40	2	28	4	1
736-459-BU	± 15	± 30	2	28	4	1.5
736-459-CU	± 12.5	± 24	2	28	4	1.5
736-459-DU	± 10	± 20	2	28	4	1.5
736-459-EU	± 7.5	± 15	2	28	6	1.5
736-459-FU	± 6	± 12.5	2	28	6	2
736-459-GU	± 4.5	± 10	2	28	6	2
736-459-HU	± 3	± 9	2	28	6	2
736-459-IU	± 2	± 7.5	2	28	6	2
736-459-HT	± 3	± 9	2	35	6	2

NOTE: Deviations on all parameters available. Please consult Oscilent for details.

DEFINITIONS: Click on the characteristic names above, for definitions of the particular characteristic.

PACKAGE DIMENSIONS (mm)

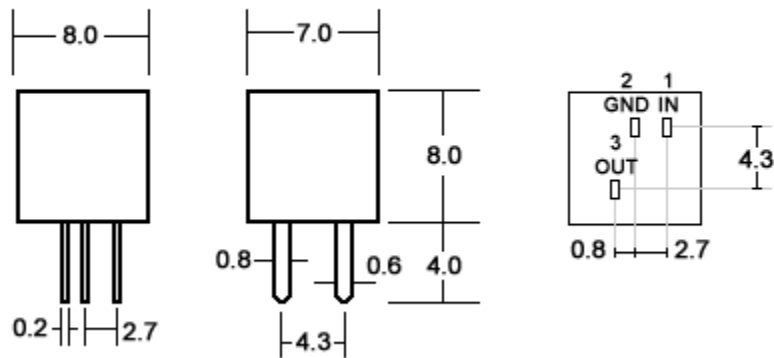


Figure 1) Front and Side Views

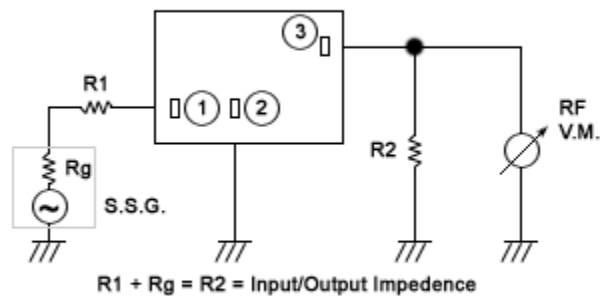


Figure 2) Measuring Circuit

Oscilent Corporation - CALL **949.252.0522**
 18195 East McDermott Street . Building D . Irvine . CA 92614 . USA
 Fax: 949.252.0599 . E-Mail: Sales@Oscilent.com

Series No.: 736