

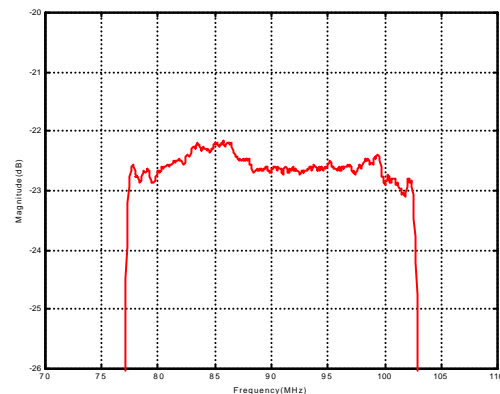
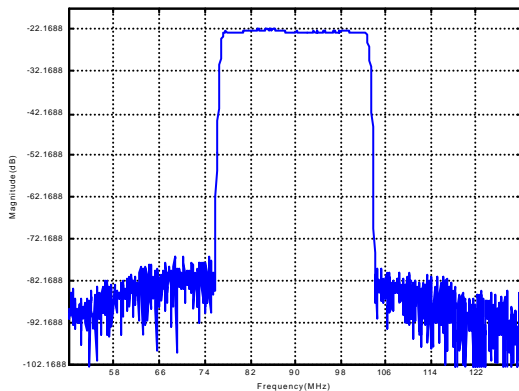


LBN09004 SAW Filter Electrical Characteristic

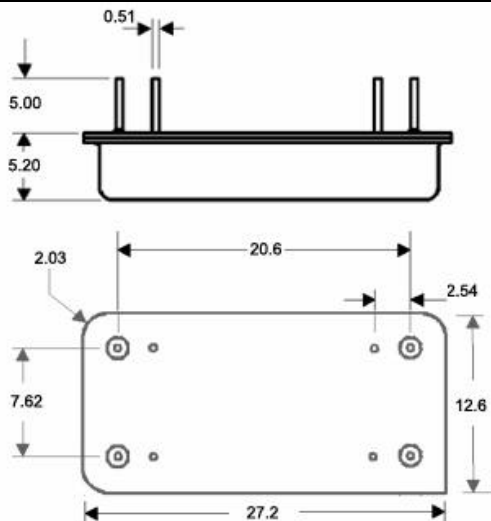
Specifications

| Parameter | Unit | Minimum | Typical | Maximum |
|---------------------|--|---------|---------|---------|
| Center Frequency | MHz | 89.9 | 90 | 90.1 |
| Insertion Loss | dB | - | 22.17 | 25 |
| 1 dB Bandwidth | MHz | 25 | 25.22 | |
| 12 dB Bandwidth | MHz | | 26.78 | 27 |
| 30 dB Bandwidth | MHz | | 27.59 | 28 |
| 50 dB Bandwidth | MHz | | 28.09 | 29 |
| Passband Variation | dB | | 0.8 | 1.0 |
| Absolute Delay | usec | | 1.95 | |
| Ultimate Rejection | dB | 50 | 55 | - |
| Substrate Material | 128 LiNbO ₃ | | | |
| Ambient Temperature | ° C | 25 | | |
| Package Size | DIP2712(27.2X12.6X5.2mm ³) | | | |

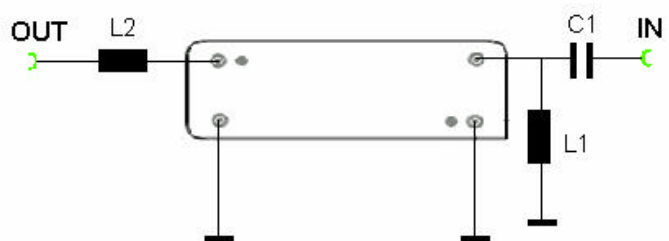
Typical Performance



Package Outline



Matching Configuration



L1=100nH L2=150nH
 C1=50pF

Source/Load Impedance = 50 ohm