



PL00250 Series SMD LED 1206 Package

Features

- *Round Dome Lens 1206 Package
3.2 x 1.6 x 1.8mm
- *AlInGaN Ultra Bright White Chip used
- *Narrow Viewing Angle
- *Low Current Requirements
- *Ultra High Light Output
- *Compatible with IR Solder-Process
- *Industry Standard Footprint
- *Other Colors available
- *1000 or 2000 pcs per Reel
- *RoHS Compliant

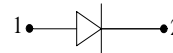
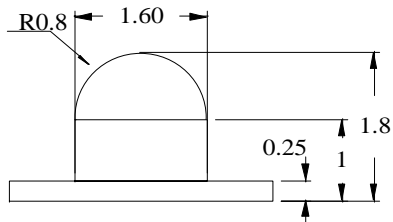
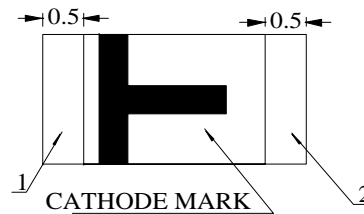
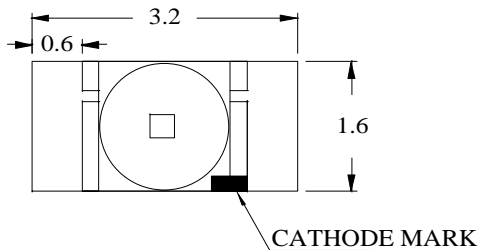
Absolute Maximum Ratings at $T_A = 25^\circ\text{C}$

Power Dissipation	105mW
Reverse Voltage (<100 μ A)	5.0V
Max Forward Current	30mA
Peak Forward Current(1/10 Duty Cycle, 0.1ms Pulse Width)	100mA
Operating Temperature Range	-40 $^\circ\text{C}$ to +85 $^\circ\text{C}$
Storage Temperature Range	-40 $^\circ\text{C}$ to +85 $^\circ\text{C}$
Reflow Soldering Temperature.....	260 $^\circ\text{C}$ for 10 seconds

Electrical & Optical Characteristics at $T_A = 25^\circ\text{C}$

Part Number	Emitting Color	Chip Material	Chromaticity Coordinates		Viewing Angle 2 θ 1/2 Deg	Forward Voltage @20mA (V)		Luminous Intensity @20mA (mcd)	
			X	Y		Typ	Max	Min	Typ
PL00250-WCW04	White	AlInGaN	0.31	0.31	40 $^\circ$	3.3	4.0	450.0	900.0

Package Dimensions are in **Millimeters**. Tolerance is $\pm 0.25\text{mm}$ unless otherwise specified.



Recommended Soldering Pad Layout

