



Part Number	Package	Application	Last Modified
803-RF455.0M-A	3.0 x 3.0 SMD	CDMA450	Jan. 01, 2007

TYPE :  
CDMA450, RF-Tx SAW Filter



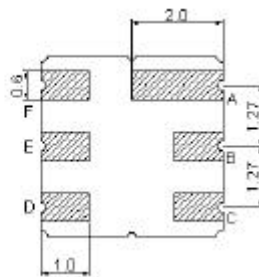
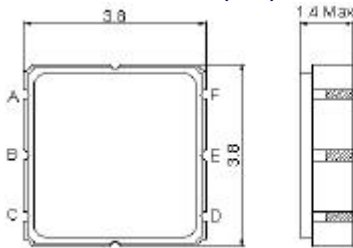
PART NUMBER :  
**803-RF455.0M-A**

**OPERATING CONDITIONS / ELECTRICAL CHARACTERISTICS**

PARAMETERS	Condition	Minimum	Typical	Maximum	Units
Center Frequency (Fo)	-	-	455.0	-	MHz
Maximum Insertion Loss	452.5~ 457.5 MHz	-	1.8	2.8	dB
Stop Band Attenuation:	0.3~ 443.0 MHz	25	28	-	dB
	462.5~ 467.5 MHz	30	50	-	
	467.5~ 1700.0MHz	25	28	-	
	1700.0~ 2000.0 MHz	20	23	-	
Source Impedance (single ended)*	-	-	50	-	ohm
Load Impedance (single ended)*	-	-	50	-	ohm
VSWR	452.5~ 457.5 MHz	-	1.4	2.0	-
Maximum Input Power	-	-	-	30	dBm
Operating Temperature	-	-30	-	+80	°C

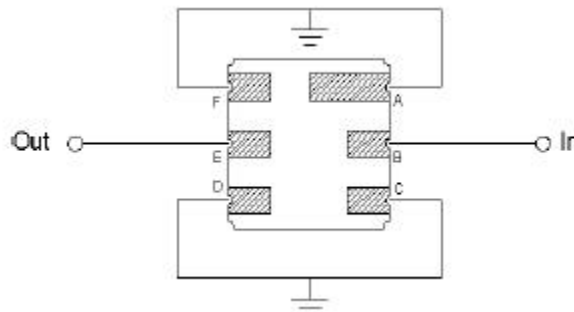
\* No Matching Network

**PACKAGE OUTLINE (mm)**



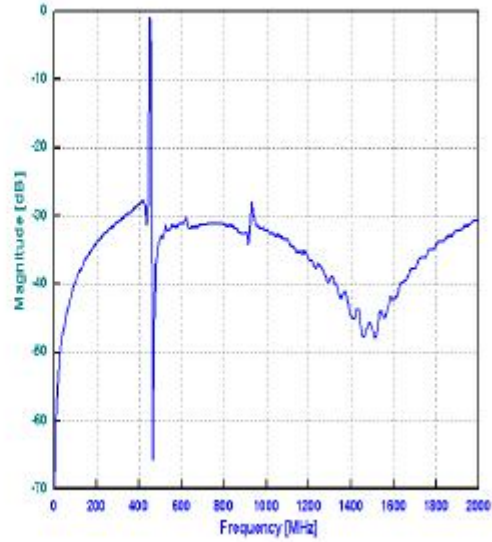
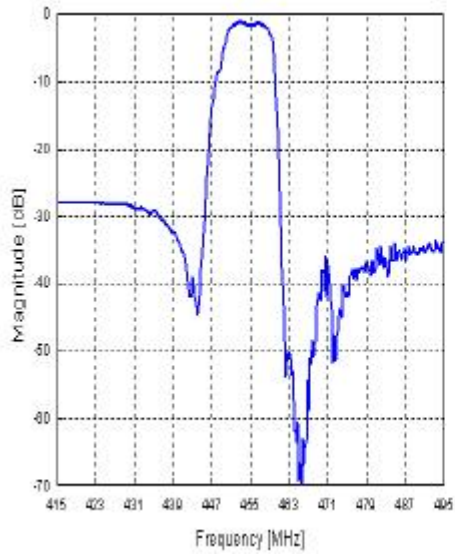
PIN LAYOUT	
A	Ground
B	Out
C	Ground
D	Ground
E	In
F	Ground

**TEST FIXTURE**

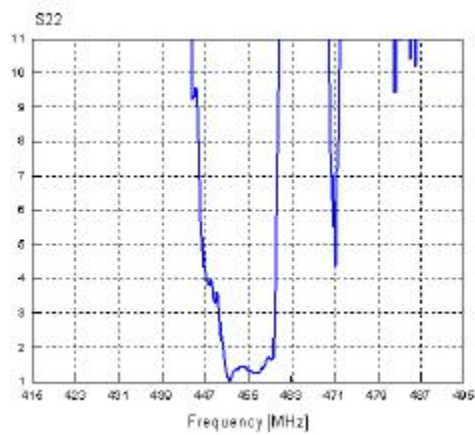
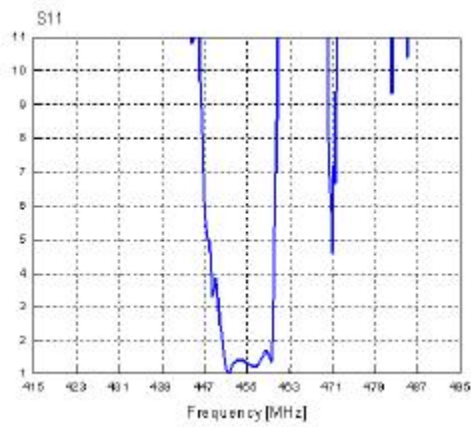


Source/ Load Impedance = 50 ohms

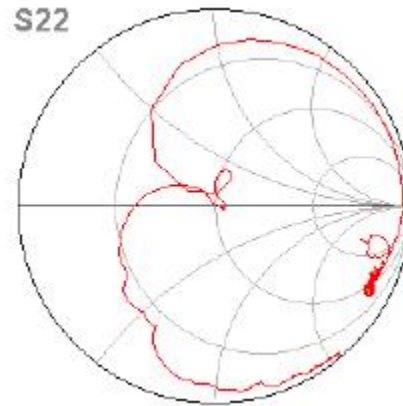
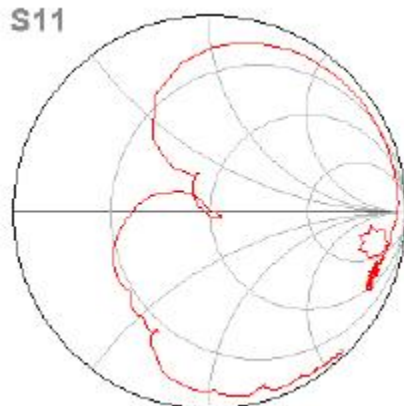
## FREQUENCY RESPONSE



## VSWR



## SMITH CHART



**Oscilent Corporation** - CALL 949.252.0522

Part No.: 803-RF455.0M-A

18195 East McDermott Street, Building D, Irvine, CA 92614, USA  
Fax: 949.252.0599, E-Mail: Sales@Oscilent.com