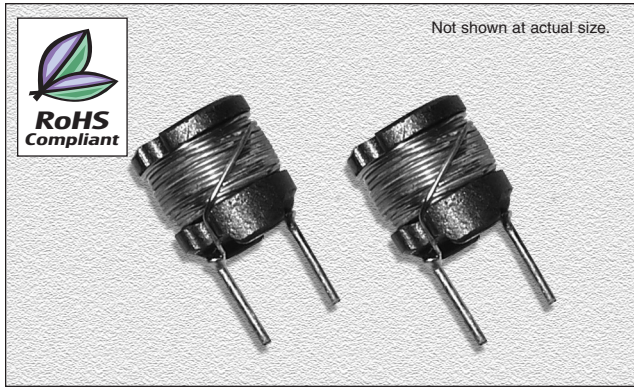


## CTCH664F Series

From 1.0  $\mu\text{H}$  to 1,000  $\mu\text{H}$

### SPECIFICATIONS

Parts numbers indicate available inductance tolerance.  
K =  $\pm 10\%$ , L =  $\pm 15\%$ , M =  $\pm 20\%$



### CHARACTERISTICS

**Description:** Radial leaded fixed inductor

**Applications:** Ideal for use as a power choke coil in switching power supply, TV sets, video appliances, and industrial equipment as well as use as a peaking coil in filtering applications

**Inductance Tolerance:**  $\pm 10\%$ ,  $\pm 15\%$ ,  $\pm 20\%$

**Testing:** Tested on a HP4285A or HP4284A at specified frequency

**Packaging:** Bulk packaging

**Rated Current:** The rated D.C. current indicates the value of current when the inductance is 10% lower than its initial value at D.C. superposition or D.C. current when at  $\Delta t = 40^\circ\text{C}$  whichever is lower. ( $T_a = 20^\circ\text{C}$ )

**Miscellaneous:** RoHS Compliant

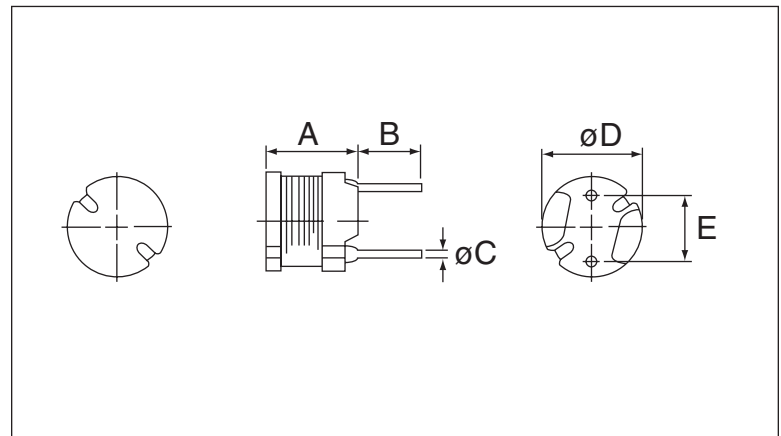
**Additional Information:** Additional electrical & physical information available upon request

**Samples available. See website for ordering information.**

Part Number	Inductance ( $\mu\text{H}$ )	Test Freq. (Hz)	DCR Max. ( $\Omega$ )	Rated DC (A)
CTCH664F-1R0M	1.0	7.96M	0.0183	4.00
CTCH664F-1R3M	1.3	7.96M	0.0206	3.70
CTCH664F-1R7M	1.7	7.96M	0.0228	3.52
CTCH664F-2R2M	2.2	7.96M	0.0255	3.20
CTCH664F-2R7M	2.7	7.96M	0.0282	3.00
CTCH664F-3R3M	3.3	7.96M	0.0308	2.83
CTCH664F-3R9M	3.9	7.96M	0.0334	2.63
CTCH664F-4R7M	4.7	7.96M	0.0364	2.43
CTCH664F-5R5M	5.5	7.96M	0.0395	2.30
CTCH664F-6R3M	6.3	7.96M	0.0430	2.14
CTCH664F-7R2M	7.2	7.96M	0.0462	2.09
CTCH664F-8R1M	8.1	7.96M	0.0498	1.99
CTCH664F-9R1M	9.1	7.96M	0.0532	1.86
CTCH664F-100M	10	7.96M	0.0566	1.75
CTCH664F-110L	11	2.52M	0.0596	1.64
CTCH664F-120L	12	2.52M	0.0630	1.52
CTCH664F-130L	13	2.52M	0.0667	1.48
CTCH664F-140L	14	2.52M	0.0701	1.44
CTCH664F-150L	15	2.52M	0.0744	1.40
CTCH664F-160L	16	2.52M	0.0788	1.33
CTCH664F-180L	18	2.52M	0.0839	1.30
CTCH664F-220K	22	2.52M	0.1100	1.27
CTCH664F-270K	27	2.52M	0.1400	1.14
CTCH664F-330K	33	2.52M	0.1700	1.03
CTCH664F-390K	39	2.52M	0.1900	0.95
CTCH664F-470K	47	2.52M	0.2300	0.87
CTCH664F-560K	56	2.52M	0.2600	0.80
CTCH664F-680K	68	2.52M	0.2800	0.72
CTCH664F-820K	82	2.52M	0.3900	0.66
CTCH664F-101K	100	1.00k	0.4300	0.59
CTCH664F-121K	120	1.00k	0.5400	0.54
CTCH664F-151K	150	1.00k	0.6400	0.48
CTCH664F-181K	180	1.00k	0.7400	0.44
CTCH664F-221K	220	1.00k	0.9600	0.40
CTCH664F-271K	270	1.00k	1.1200	0.36
CTCH664F-331K	330	1.00k	1.4800	0.33
CTCH664F-391K	390	1.00k	1.6600	0.30
CTCH664F-471K	470	1.00k	1.9100	0.27
CTCH664F-561K	560	1.00k	2.3100	0.25
CTCH664F-681K	680	1.00k	2.6700	0.23
CTCH664F-821K	820	1.00k	3.1000	0.21
CTCH664F-102K	1000	1.00k	4.4500	0.19

### PHYSICAL DIMENSIONS

Size	A Max.	B	C	D	E
mm	6.5	4.0 $\pm$ 1.0	0.5+0.1,-0.05	6.0 $\pm$ 0.5	4.0 $\pm$ 0.3
inches	0.26	0.16 $\pm$ 0.04	0.02+0.004,-0.002	0.24 $\pm$ 0.02	0.16 $\pm$ 0.012



04.04.07