

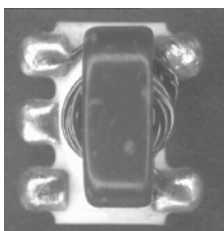
E-Series 1:9 Transformer

10 - 75 MHz



Features

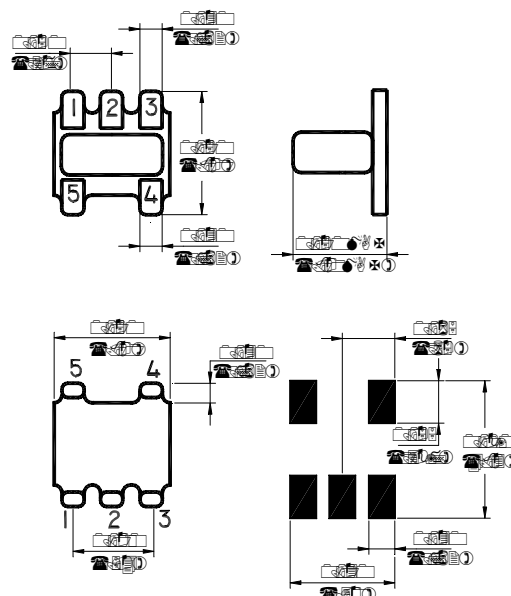
- Surface Mount
- 1:9 Impedance Ratio
- CT on Secondary



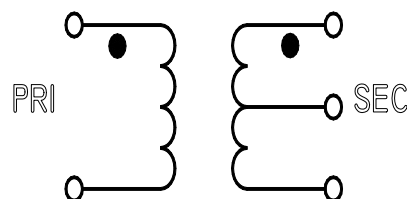
Description

M/A-COM's ETC9-1T-5 is a 1:9 RF transmission line step-up transformer in a low cost, surface mount package. Ideally suited for high volume cellular and wireless applications. Typical applications include single to balanced mode conversion and impedance matching.

SM-22 Package



Schematic



Electrical Specifications @25°C

Parameter	Units	Maximum	Minimum	Typical
Frequency Range	MHz	—	—	—
Insertion Loss ($f_L - f_U$) 10- 75 MHz	dB	2.0	—	0.8
Amplitude Unbalance 10-75 MHz	dB	1.0	—	0.1
Phase Unbalance 10-75 MHz	Degrees	7°	—	—
Return Loss 10-75 MHz	dB	14	—	20.50

ADVANCED: Data Sheets contain information regarding a product M/A-COM Technology Solutions is considering for development. Performance is based on target specifications, simulated results, and/or prototype measurements. Commitment to develop is not guaranteed.

PRELIMINARY: Data Sheets contain information regarding a product M/A-COM Technology Solutions has under development. Performance is based on engineering tests. Specifications are typical. Mechanical outline has been fixed. Engineering samples and/or test data may be available. Commitment to produce in volume is not guaranteed.

S 0806 F

- North America Tel: 800.366.2266 • Europe Tel: +353.21.244.6400
- India Tel: +91.80.4155721 • China Tel: +86.21.2407.1588

Visit www.macomtech.com for additional data sheets and product information.

Absolute Maximum Ratings

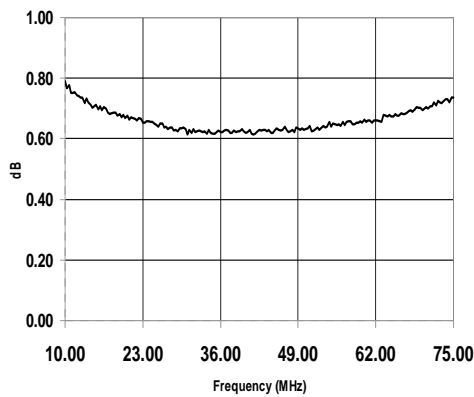
Parameter	Absolute Maximum
RF Power	250 mW
DC Current	30 mA
Operating Temperature	-20°C to +85°C
Storage Temperature	-20°C to +85°C

Functional Configuration

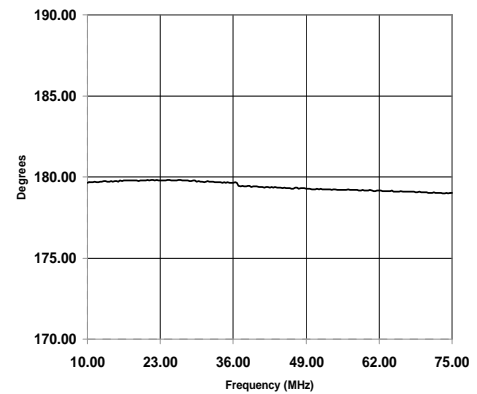
Function	Pin No.
Secondary Dot	1
Secondary CT	2
Secondary	3
Primary	4
Primary Dot	5

Typical Performance @ 25°C

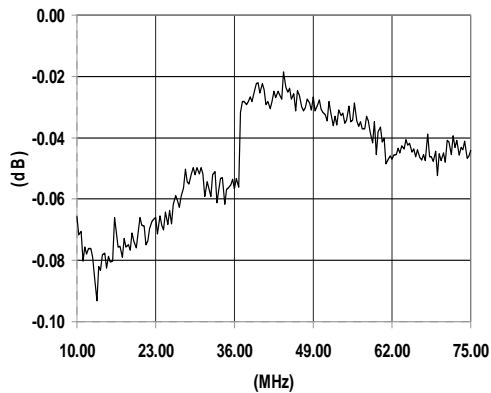
Insertion Loss



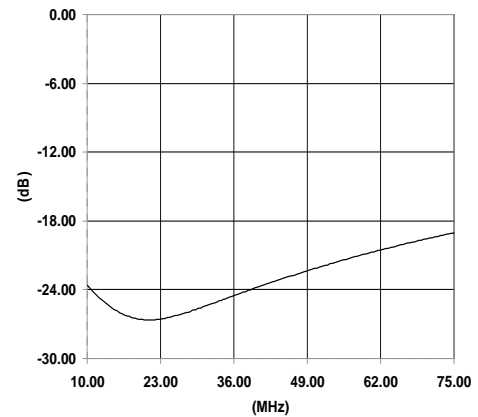
Phase Unbalance



Amplitude Unbalance



Return Loss



ADVANCED: Data Sheets contain information regarding a product M/A-COM Technology Solutions is considering for development. Performance is based on target specifications, simulated results, and/or prototype measurements. Commitment to develop is not guaranteed.
PRELIMINARY: Data Sheets contain information regarding a product M/A-COM Technology Solutions has under development. Performance is based on engineering tests. Specifications are typical. Mechanical outline has been fixed. Engineering samples and/or test data may be available. Commitment to produce in volume is not guaranteed.

S 0806 F

• **North America** Tel: 800.366.2266 • **Europe** Tel: +353.21.244.6400
 • **India** Tel: +91.80.4155721 • **China** Tel: +86.21.2407.1588
 Visit www.macomtech.com for additional data sheets and product information.