

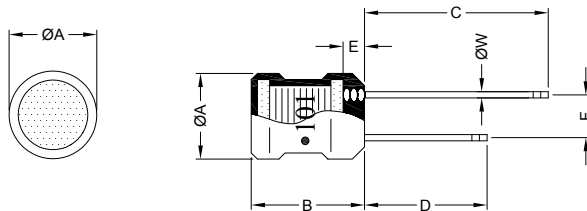
# RADIAL CHOKE COIL

RCB0506 SERIES

## 1. PART NO. EXPRESSION :

R	C	B	0	5	0	6	1	R	0	M	Z	F	
(a)	(b)	(c)	(d)(e)(f)	(a) Series code			(b) Dimension code			(c) Inductance code : 1R0 = 1.0uH			(d) Tolerance code : K = ±10%, M = ±20%
											(e) X, Y, Z : Standard part	(f) F : Lead Free	

## 2. CONFIGURATION & DIMENSIONS :

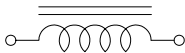


Marking :  
"●" : Start

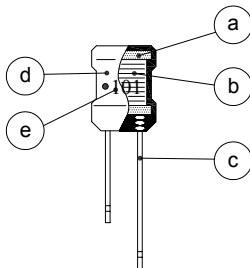
Unit:m/m

ØA	B	C	D	E	F	ØW
5.00±0.5	6.50 <sup>+1.0</sup> <sub>-0.5</sub>	20.00±5.0	15.00±5.0	2.50 Max.	2.00±0.50	0.50 Ref.

## 3. SCHEMATIC :



## 4. MATERIALS :

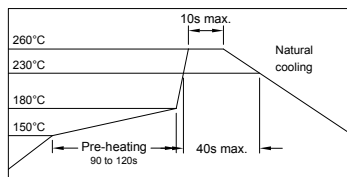


- (a) Core : DR Ferrite Core
- (b) Wire : Enamelled Copper Wire
- (c) Lead : Tinned Copper Wire
- (d) Tube : Shrinkable Tube
- (e) Ink : Bon Margue

## 5. GENERAL SPECIFICATION :

- a) Temp. rise : 20°C Max. at rated current
- b) Storage temp. : -40°C to +125°C
- c) Operating temp. : -40°C to +105°C

RECOMMENDED SOLDERING CONDITIONS  
REFLOW SOLDERINGS



NOTE : Specifications subject to change without notice. Please check our website for latest information.



RoHS Compliant

25.04.2008



SUPERWORLD ELECTRONICS (S) PTE LTD

### 6. ELECTRICAL CHARACTERISTICS :

Part No.	Inductance ( $\mu\text{H}$ )	Q Min.	Test Frequency (MHz)	SRF (MHz) Min.	RDC ( $\Omega$ ) Max.	IDC (mA) Max.
RCB05061R0MZ	1.0 $\pm$ 20%	60	7.96	105.0	0.10	1030
RCB05061R2MZ	1.2 $\pm$ 20%	60	7.96	90.0	0.15	980
RCB05061R5MZ	1.5 $\pm$ 20%	60	7.96	75.0	0.20	920
RCB05061R8MZ	1.8 $\pm$ 20%	60	7.96	70.0	0.22	880
RCB05062R2MZ	2.2 $\pm$ 20%	60	7.96	65.0	0.24	830
RCB05062R7MZ	2.7 $\pm$ 20%	60	7.96	60.0	0.27	790
RCB05063R3MZ	3.3 $\pm$ 20%	60	7.96	50.0	0.30	750
RCB05063R9MZ	3.9 $\pm$ 20%	60	7.96	45.0	0.30	720
RCB05064R7MZ	4.7 $\pm$ 20%	60	7.96	40.0	0.35	670
RCB05065R6KZ	5.6 $\pm$ 10%	60	7.96	35.0	0.35	640
RCB05066R8KZ	6.8 $\pm$ 10%	60	7.96	30.0	0.40	620
RCB05068R2KZ	8.2 $\pm$ 10%	60	7.96	25.0	0.40	590
RCB0506100KZ	10.0 $\pm$ 10%	60	2.52	20.0	0.45	550
RCB0506120KZ	12.0 $\pm$ 10%	60	2.52	15.0	0.50	530
RCB0506150KZ	15.0 $\pm$ 10%	60	2.52	13.0	0.55	500
RCB0506180KZ	18.0 $\pm$ 10%	60	2.52	11.0	0.60	480
RCB0506220KZ	22.0 $\pm$ 10%	60	2.52	10.0	0.65	460
RCB0506270KZ	27.0 $\pm$ 10%	50	2.52	9.0	0.75	430
RCB0506330KZ	33.0 $\pm$ 10%	50	2.52	8.0	0.85	410
RCB0506390KZ	39.0 $\pm$ 10%	50	2.52	7.5	0.90	390
RCB0506470KZ	47.0 $\pm$ 10%	50	2.52	7.0	1.00	370
RCB0506560KZ	56.0 $\pm$ 10%	50	2.52	6.5	1.20	350
RCB0506680KZ	68.0 $\pm$ 10%	50	2.52	6.0	1.30	340
RCB0506820KZ	82.0 $\pm$ 10%	50	2.52	5.5	1.50	320
RCB0506101KZ	100.0 $\pm$ 10%	50	0.796	5.0	1.70	305
RCB0506121KZ	120.0 $\pm$ 10%	50	0.796	4.8	1.90	290
RCB0506151KZ	150.0 $\pm$ 10%	50	0.796	4.4	2.10	275
RCB0506181KZ	180.0 $\pm$ 10%	50	0.796	4.2	2.30	235
RCB0506221KZ	220.0 $\pm$ 10%	45	0.796	3.8	2.50	200
RCB0506271KZ	270.0 $\pm$ 10%	45	0.796	3.6	2.75	180
RCB0506331KZ	330.0 $\pm$ 10%	45	0.796	3.3	4.68	165
RCB0506391KZ	390.0 $\pm$ 10%	45	0.796	3.0	6.00	150
RCB0506471KZ	470.0 $\pm$ 10%	55	0.796	2.8	6.50	140
RCB0506561KZ	560.0 $\pm$ 10%	55	0.796	2.4	8.50	135
RCB0506681KZ	680.0 $\pm$ 10%	55	0.796	2.2	9.00	125
RCB0506821KZ	820.0 $\pm$ 10%	55	0.796	2.0	9.60	120
RCB0506102KZ	1000.0 $\pm$ 10%	55	0.252	1.8	11.50	100



**RoHS Compliant**

NOTE : Specifications subject to change without notice. Please check our website for latest information.

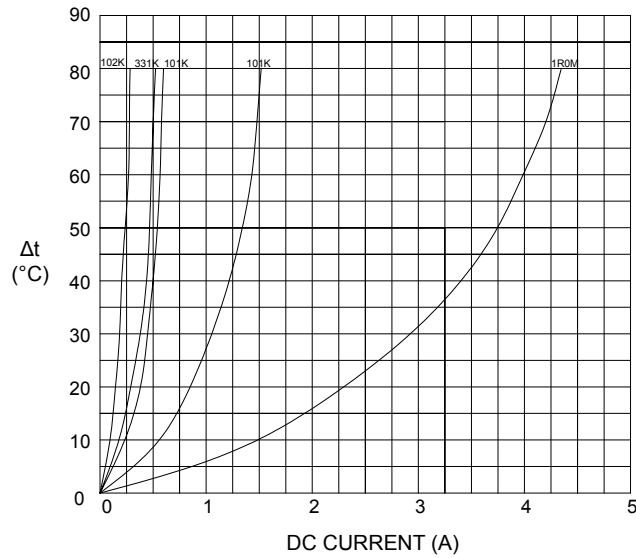
25.04.2008



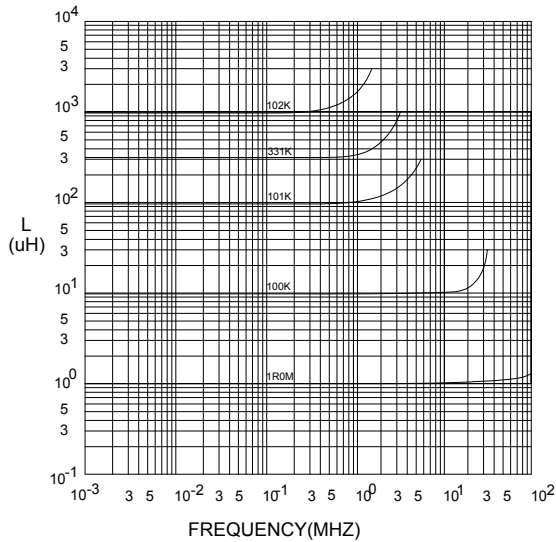
**SUPERWORLD ELECTRONICS (S) PTE LTD**

### 7. CHARACTERISTICS CURVES :

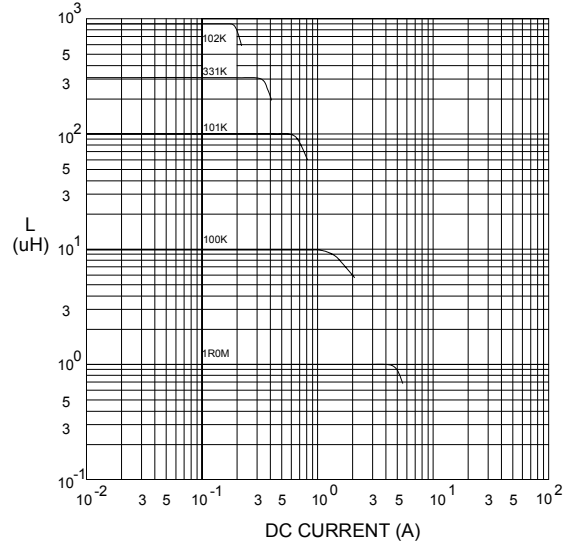
@ TEMP. RISE VS. DC SUPERPOSITION RESPONSE CURVE



@ INDUCTANCE VS. FREQUENCY RESPONSE CURVE



@ INDUCTANCE VS. DC SUPERPOSITION RESPONSE CURVE



NOTE : Specifications subject to change without notice. Please check our website for latest information.



**RoHS Compliant**

25.04.2008



**SUPERWORLD ELECTRONICS (S) PTE LTD**

# RADIAL CHOKE COIL

RCB0506 SERIES

8. UL CARD :

**OBMW2** **November 30, 2000**  
**Magnet Wire - Component**

**PACIFIC ELECTRIC WIRE & CABLE (SHENZHEN) CO LTD** **E201757**  
**607 BAOLONG INDUSTRIAL ESTATE LONGGANG, SHENZHEN**  
**GUANGDONG CHINA**

Mtl Dsg	BC	Coating Type	TC	ANSI Type	TI
UEW/U		Polyurethane	—	—	130
PEW/U		Polyester	—	MW5-C	155°C
PEWH/U		Modified Polyester	—	MW30-C	180
PEW-NY/U		Polyester	Polyamide	MW24-C	155
HAI/U		Polyester(Amide)(Imide)	Polyamideimide	MW35,73	200
UEW-NY/U		Polyurethane	Polyamide	MW80-C	155
				MW28-C	130

**Marking: Company name and material designation or marked designation on package or reel, and Recognized Component Mark.**

See General Information Preceding These Recognitions

1/3/2001 Underwriters Laboratories Inc. Card 1 of 2

**YDPU8** **August 18, 1999**  
**Tubing Extruded Insulating Certified For Canada - Component**

**SHENZHEN CHANGBAO SPECIAL PLASTIC PRODUCTS CO LTD** **E180908**  
**SHENZHEN SCIENCE & INDUSTRY PARK NAN SHAN**  
**SHENZHEN, GUANGDONG 518057 CHINA**

Cat. No.	Max V	Max Temp C	Col. Recognized	Max Temp Rated Oil Resistance *C	OFT Rated #
<b>Polyolefin heat shrinkable tubing.</b>					
Changbao 102	600	125	All	—	Yes

**#Tubing is considered to comply with the optional OFT flammability requirements only if it is so marked.**

**Marking: Company name, catalog number and temperature rating in degrees C appears on tubing, tags attached to both ends of the tubing or on the shipping spool label or smallest unit container and the Recognized Component Mark for Canada .**

See General Information Preceding These Recognitions  
 For use only in equipment where the acceptability of the combination is determined by Underwriters Laboratories Inc.

8/31/1999 Underwriters Laboratories Inc. Card 1 of 1



**RoHS Compliant**

NOTE : Specifications subject to change without notice. Please check our website for latest information.

25.04.2008



**SUPERWORLD ELECTRONICS (S) PTE LTD**

PG. 4