

# RADIAL CHOKE COIL

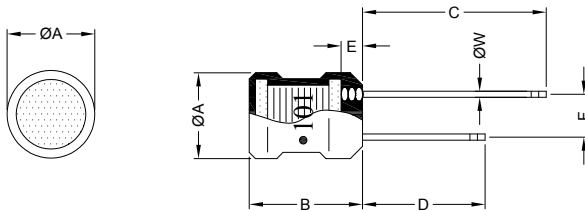
RCB0610 SERIES

## 1. PART NO. EXPRESSION :

R C B 0 6 1 0 1 0 0 K Z F  
 (a) (b) (c) (d)(e)(f)

- (a) Series code
- (b) Dimension code
- (c) Inductance code : 100 = 10uH
- (d) Tolerance code : K =  $\pm 10\%$
- (e) X, Y, Z : Standard part
- (f) F : Lead Free

## 2. CONFIGURATION & DIMENSIONS :

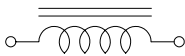


Marking :  
 " ● " : Start

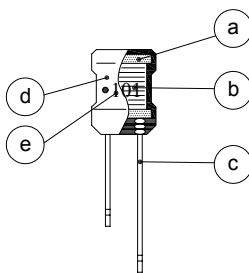
Unit:m/m

ØA	B	C	D	E	F	ØW
6.70±0.5	10.00±1.0	25.00±5.0	18.00±5.0	2.50 Max.	3.00±0.5	0.65 Ref.

## 3. SCHEMATIC :



## 4. MATERIALS :



- (a) Core : DR Ferrite Core
- (b) Wire : Enamelled Copper Wire
- (c) Lead : Tinned Copper Wire
- (d) Tube : Shrinkable Tube
- (e) Ink : Bon Margue

## 5. GENERAL SPECIFICATION :

- a) Temp. rise : 20°C Max. at rated current
- b) Storage temp. : -40°C to +125°C
- c) Operating temp. : -40°C to +105°C



RoHS Compliant

NOTE : Specifications subject to change without notice. Please check our website for latest information.

25.04.2008



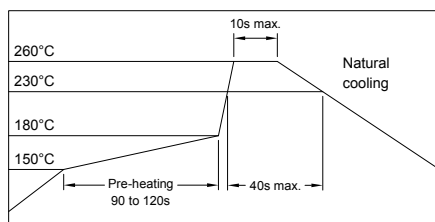
SUPERWORLD ELECTRONICS (S) PTE LTD

### 6. ELECTRICAL CHARACTERISTICS :

Part No.	Inductance ( $\mu$ H )	Test Frequency ( Hz )	Q Min.	Test Frequency ( Hz )	SRF ( MHz ) Min.	RDC ( $\Omega$ ) Max.	IDC ( A ) Max.
RCB0610100KZF	10 $\pm$ 10%	1V/1K	20	1V/2.520M	16.0	0.07	1.10
RCB0610120KZF	12 $\pm$ 10%	1V/1K	20	1V/2.520M	12.0	0.08	1.00
RCB0610150KZF	15 $\pm$ 10%	1V/1K	20	1V/2.520M	10.0	0.09	0.90
RCB0610180KZF	18 $\pm$ 10%	1V/1K	20	1V/2.520M	10.0	0.10	0.75
RCB0610220KZF	22 $\pm$ 10%	1V/1K	20	1V/2.520M	9.0	0.12	0.70
RCB0610270KZF	27 $\pm$ 10%	1V/1K	20	1V/2.520M	8.0	0.13	0.65
RCB0610330KZF	33 $\pm$ 10%	1V/1K	20	1V/2.520M	7.0	0.15	0.60
RCB0610390KZF	39 $\pm$ 10%	1V/1K	20	1V/2.520M	6.0	0.16	0.55
RCB0610470KZF	47 $\pm$ 10%	1V/1K	20	1V/2.520M	6.0	0.18	0.45
RCB0610560KZF	56 $\pm$ 10%	1V/1K	20	1V/2.520M	5.0	0.21	0.40
RCB0610680KZF	68 $\pm$ 10%	1V/1K	20	1V/2.520M	5.0	0.24	0.36
RCB0610820KZF	82 $\pm$ 10%	1V/1K	20	1V/2.520M	5.0	0.35	0.34
RCB0610101KZF	100 $\pm$ 10%	1V/1K	20	1V/0.796M	4.0	0.40	0.32
RCB0610121KZF	120 $\pm$ 10%	1V/1K	20	1V/0.796M	4.0	0.45	0.30
RCB0610151KZF	150 $\pm$ 10%	1V/1K	20	1V/0.796M	3.5	0.50	0.28
RCB0610181KZF	180 $\pm$ 10%	1V/1K	20	1V/0.796M	3.0	0.75	0.26
RCB0610221KZF	220 $\pm$ 10%	1V/1K	20	1V/0.796M	3.0	0.90	0.24
RCB0610271KZF	270 $\pm$ 10%	1V/1K	20	1V/0.796M	2.5	1.00	0.22
RCB0610331KZF	330 $\pm$ 10%	1V/1K	20	1V/0.796M	2.5	1.10	0.20
RCB0610391KZF	390 $\pm$ 10%	1V/1K	20	1V/0.796M	2.0	1.20	0.18
RCB0610471KZF	470 $\pm$ 10%	1V/1K	20	1V/0.796M	2.0	1.50	0.16
RCB0610561KZF	560 $\pm$ 10%	1V/1K	20	1V/0.796M	2.0	1.80	0.15

### RECOMMENDED SOLDERING CONDITIONS

#### REFLOW SOLDERINGS



**RoHS Compliant**

NOTE : Specifications subject to change without notice. Please check our website for latest information.

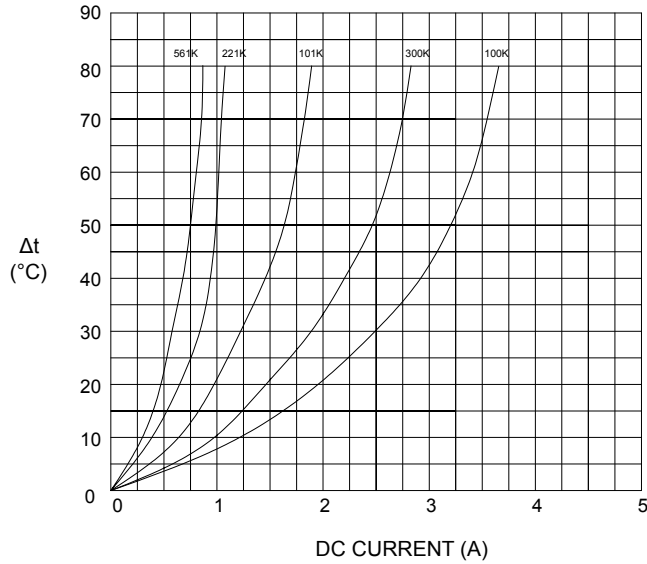
25.04.2008



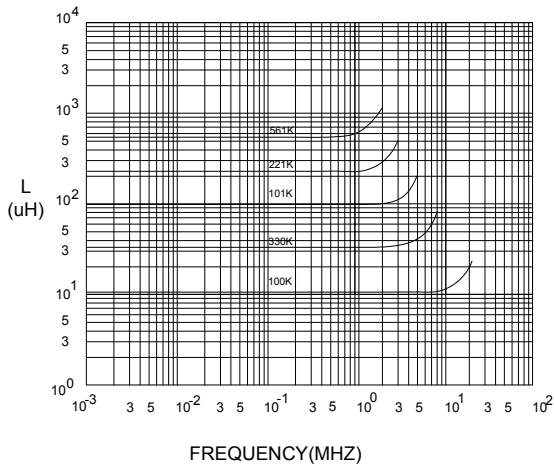
**SUPERWORLD ELECTRONICS (S) PTE LTD**

### 7. CHARACTERISTICS CURVES :

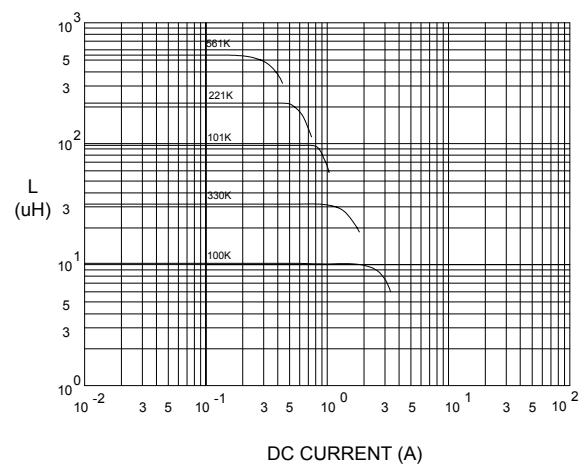
@ TEMP. RISE VS. DC SUPERPOSITION RESPONSE CURVE



@ INDUCTANCE VS. FREQUENCY RESPONSE CURVE



@ INDUCTANCE VS. DC SUPERPOSITION RESPONSE CURVE



**RoHS Compliant**

NOTE : Specifications subject to change without notice. Please check our website for latest information.

25.04.2008



**SUPERWORLD ELECTRONICS (S) PTE LTD**

# RADIAL CHOKE COIL

RCB0610 SERIES

8. UL CARD :

**OBMW2** **November 30, 2000**  
**Magnet Wire - Component**

**PACIFIC ELECTRIC WIRE & CABLE (SHENZHEN) CO LTD** **E201757**  
 607 BAOLONG INDUSTRIAL ESTATE LONGGANG, SHENZHEN  
 GUANGDONG CHINA

Mtl Dsg	Coating Type		ANSI Type	TI
	BC	TC		
UEW/U	Polyurethane	—	—	130
PEW/U	Polyester	—	MW5-C	155°C
PEWH/U	Modified Polyester	—	MW30-C	180
PEW-NY/U	Polyester	Polyamide	MW24-C	155
HAI/U	Polyester(Amide)(Imide)	Polyamideimide	MW35,73	200
UEW-NY/U	Polyurethane	Polyamide	MW80-C	155
			MW28-C	130

**Marking:** Company name and material designation or marked designation on package or reel, and Recognized Component Mark.

See General Information Preceding These Recognitions

1/3/2001 Underwriters Laboratories Inc. Card 1 of 2

**YDPU8** **August 18, 1999**  
**Tubing Extruded Insulating Certified For Canada - Component**

**SHENZHEN CHANGBAO SPECIAL PLASTIC PRODUCTS CO LTD** **E180908**  
 SHENZHEN SCIENCE & INDUSTRY PARK NAN SHAN  
 SHENZHEN, GUANGDONG 518057 CHINA

Cat. No.	Max V	Max Temp C	Col Recognized	Max Temp Rated Oil Resistance *C	OFT Rated #
<b>Polyolefin heat shrinkable tubing.</b> Changbao 102	600	125	All	—	Yes

**#Tubing is considered to comply with the optional OFT flammability requirements only if it is so marked.**

**Marking:** Company name, catalog number and temperature rating in degrees C appears on tubing, tags attached to both ends of the tubing or on the shipping spool label or smallest unit container and the Recognized Component Mark for Canada .

See General Information Preceding These Recognitions  
 For use only in equipment where the acceptability of the combination is determined by Underwriters Laboratories Inc.

8/31/1999 Underwriters Laboratories Inc. Card 1 of 1



**RoHS Compliant**

NOTE : Specifications subject to change without notice. Please check our website for latest information.

25.04.2008