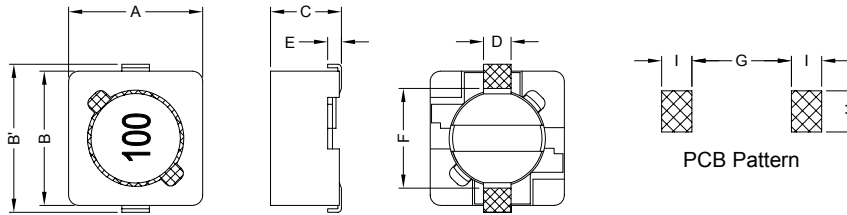


### 1. PART NO. EXPRESSION :

S D C 0 6 0 4 - 1 0 1 M F  
 (a) (b) (c) (d)(e)

- (a) Series code
- (b) Dimension code
- (c) Inductance code : 101 = 100uH
- (d) Tolerance code : M = ±20%
- (e) F : Lead Free

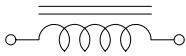
### 2. CONFIGURATION & DIMENSIONS :



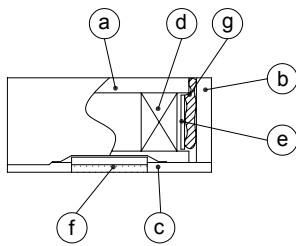
Unit:m/m

A	B	B'	C	D	E	F	G	H	I
6.20±0.30	5.90±0.30	6.60±0.30	5.00 Max.	1.50 Ref.	0.60 Ref.	4.60 Ref.	4.6 Ref.	1.9 Ref.	1.4 Ref.

### 3. SCHEMATIC :



### 4. MATERIALS :



- (a) Core : DR Ferrite Core
- (b) Core : RI Ferrite Core
- (c) Base : LCP
- (d) Wire : Enamelled Copper Wire
- (e) Tape : Mylar Tape
- (f) Terminal : Tinned Copper Plate
- (g) Adhesive : Epoxy

### 5. GENERAL SPECIFICATION :

- a) Temp. rise : 40°C Max.
- b) Rated current : Base on temp. rise &  $\Delta L/L0A = 25\%$  Max.
- c) Operating temp. : -20°C to +80°C



**RoHS Compliant**

NOTE : Specifications subject to change without notice. Please check our website for latest information.

05.05.2008



**SUPERWORLD ELECTRONICS (S) PTE LTD**

## 6. ELECTRICAL CHARACTERISTICS :

Part No.	Inductance ( $\mu$ H )	Test Frequency	RDC ( $\Omega$ ) Max.	IDC ( A ) Max.
SDC0604-100MF	10 $\pm$ 20%	1KHz / 0.25V	0.12	1.35
SDC0604-120MF	12 $\pm$ 20%	1KHz / 0.25V	0.13	1.22
SDC0604-150MF	15 $\pm$ 20%	1KHz / 0.25V	0.18	1.11
SDC0604-180MF	18 $\pm$ 20%	1KHz / 0.25V	0.24	1.02
SDC0604-220MF	22 $\pm$ 20%	1KHz / 0.25V	0.27	0.91
SDC0604-270MF	27 $\pm$ 20%	1KHz / 0.25V	0.30	0.82
SDC0604-330MF	33 $\pm$ 20%	1KHz / 0.25V	0.33	0.74
SDC0604-390MF	39 $\pm$ 20%	1KHz / 0.25V	0.37	0.69
SDC0604-470MF	47 $\pm$ 20%	1KHz / 0.25V	0.52	0.62
SDC0604-560MF	56 $\pm$ 20%	1KHz / 0.25V	0.56	0.58
SDC0604-680MF	68 $\pm$ 20%	1KHz / 0.25V	0.63	0.51
SDC0604-820MF	82 $\pm$ 20%	1KHz / 0.25V	0.71	0.46
SDC0604-101MF	100 $\pm$ 20%	1KHz / 0.25V	1.03	0.42
SDC0604-121MF	120 $\pm$ 20%	1KHz / 0.25V	1.15	0.38
SDC0604-151MF	150 $\pm$ 20%	1KHz / 0.25V	1.68	0.35
SDC0604-181MF	180 $\pm$ 20%	1KHz / 0.25V	1.87	0.32
SDC0604-221MF	220 $\pm$ 20%	1KHz / 0.25V	2.08	0.29
SDC0604-271MF	270 $\pm$ 20%	1KHz / 0.25V	2.37	0.26
SDC0604-331MF	330 $\pm$ 20%	1KHz / 0.25V	2.67	0.23
SDC0604-391MF	390 $\pm$ 20%	1KHz / 0.25V	2.94	0.22
SDC0604-471MF	470 $\pm$ 20%	1KHz / 0.25V	3.93	0.20
SDC0604-561MF	560 $\pm$ 20%	1KHz / 0.25V	5.43	0.18
SDC0604-681MF	680 $\pm$ 20%	1KHz / 0.25V	7.32	0.17
SDC0604-821MF	820 $\pm$ 20%	1KHz / 0.25V	8.24	0.15
SDC0604-102MF	1000 $\pm$ 20%	1KHz / 0.25V	9.26	0.14



RoHS Compliant

NOTE : Specifications subject to change without notice. Please check our website for latest information.

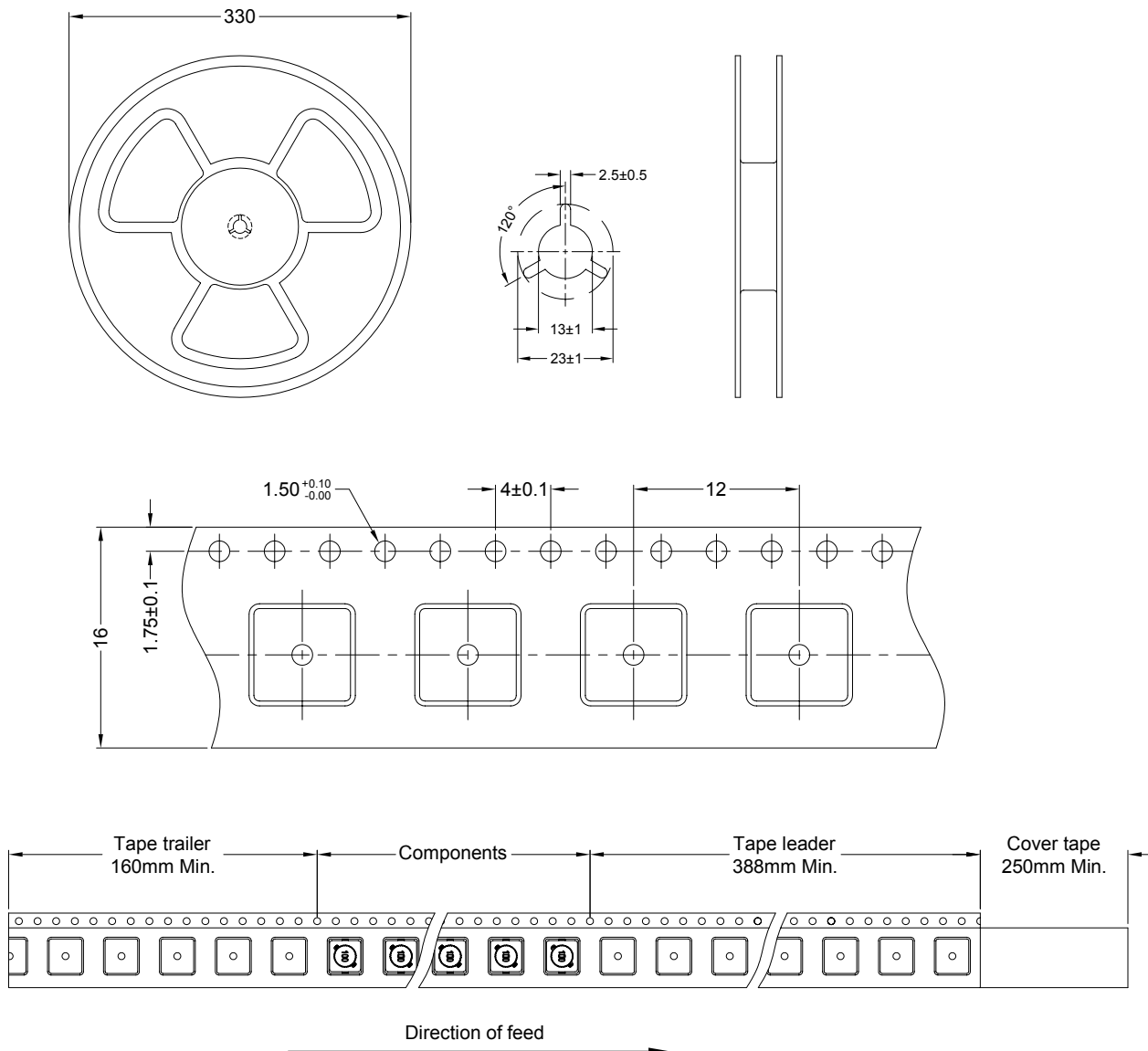
05.05.2008



SUPERWORLD ELECTRONICS (S) PTE LTD

## 7. PACKAGING INFORMATION : ( Unit : mm )

### 7-1. Reel & Tape Dimension



### 7-2. Quantity & G.W. per package

SERIES	INNER : REEL			OUTER : CARTON		
	Q'TY (PCS)	G.W. (Kg)	STYLE	Q'TY (PCS)	G.W. (Kg)	SIZE (cm)
SDC0604	1000	0.85	13-16	16000	18	36 x 36 x 40



**RoHS Compliant**

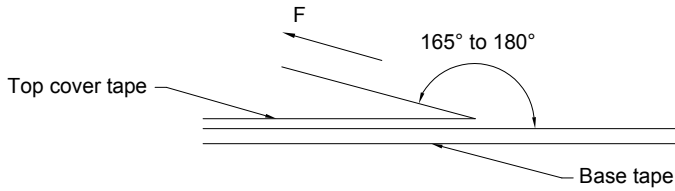
NOTE : Specifications subject to change without notice. Please check our website for latest information.

05.05.2008



**SUPERWORLD ELECTRONICS (S) PTE LTD**

### 7-3. Tearing Off Force



The force for tearing off cover tape is 10 to 60 grams in the arrow direction.



**RoHS Compliant**

NOTE : Specifications subject to change without notice. Please check our website for latest information.

05.05.2008



**SUPERWORLD ELECTRONICS (S) PTE LTD**