



**Data Sheet**



Product Category: RF SAW Filter

Part Number	Package	Application	Last Modified
805-RF434.42M-B	5.0 x 5.0 SMD	Remote Control	Jan. 01, 2007

TYPE :

Remote Control, RF SAW Filter



PART NUMBER :

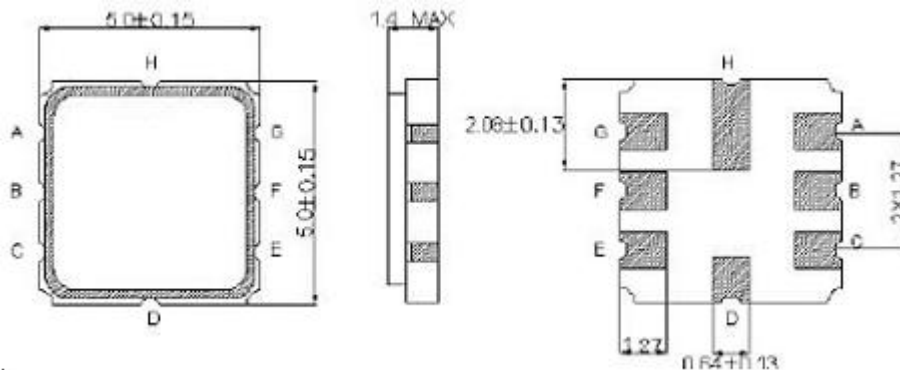
**805-RF434.42M-B**

**OPERATING CONDITIONS / ELECTRICAL CHARACTERISTICS**

PARAMETERS	Condition	Minimum	Typical	Maximum	Units
Center Frequency (Fo)	-	-	434.42	-	MHz
Insertion Loss	434.30 ~ 434.54 MHz	-	2.0	4.5	dB
Relative Attenuation:	10.0 ~ 415.0 MHz	45	50	-	dB
	415.0 ~ 429.0 MHz	40	45	-	
	429.0 ~ 433.42 MHz	15	20	-	
	435.42 ~ 443.0 MHz	10	15	-	
	443.0 ~ 550.0 MHz	35	40	-	
550.0 ~ 1000.0 MHz	45	50	-	-	
Source Impedance (single ended)*	-	-	50	-	ohm
Load Impedance (single ended)*	-	-	50	-	ohm
Pass Band Ripple	434.30 ~ 434.54 MHz	-	1.0	2.0	-
Maximum DC Voltage	-	-	-	10	V
Maximum Input Power	-	-	-	10	dBm
Operating Temperature	-	-40	-	+85	°C

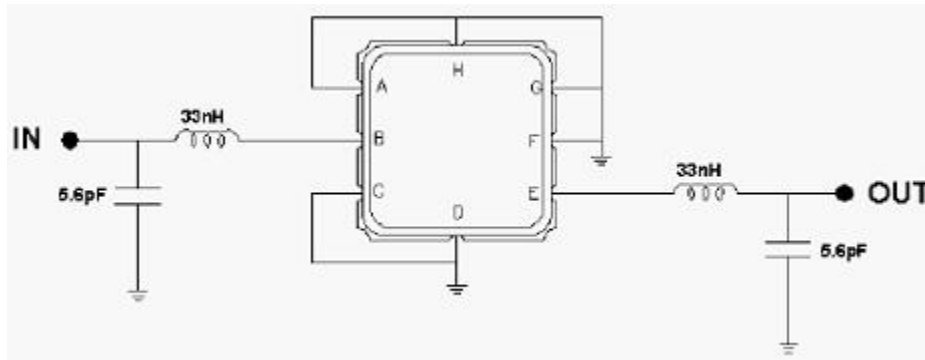
\* With Matching Network

**PACKAGE OUTLINE (mm)**

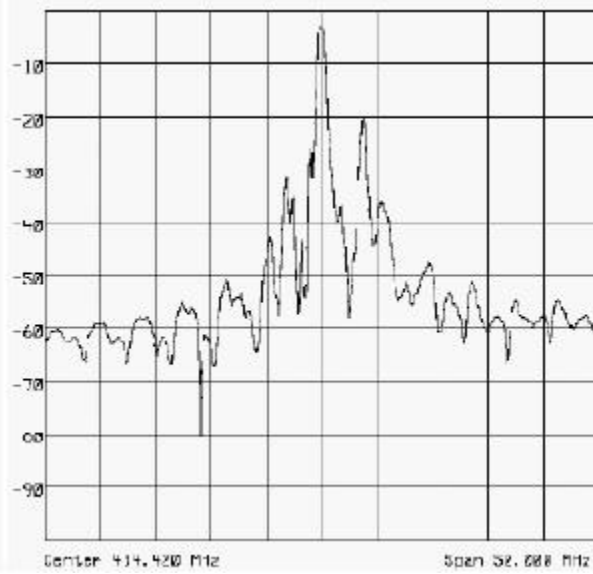
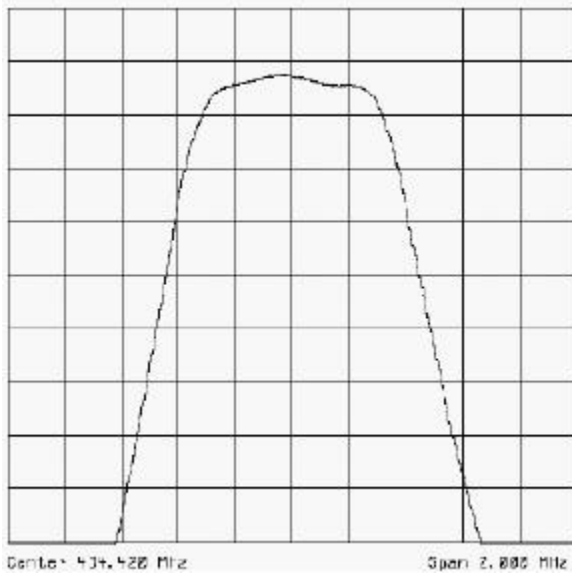


PIN LAYOUT	
A	Ground
B	In
C	Ground
D	Ground
E	Out
F	Ground
G	Ground
H	Ground

**TEST FIXTURE**



**FREQUENCY RESPONSE**



**Oscilent Corporation** - CALL 949.252.0522

**Part No.:** 805-RF434.42M-B

18195 East McDermott Street , Building D , Irvine , CA 92614 , USA  
 Fax: 949.252.0599 , E-Mail: Sales@Oscilent.com