

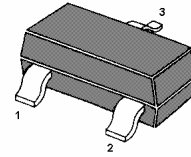
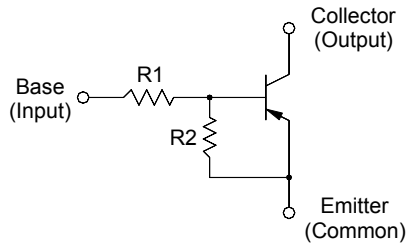
MMBTRA101SS...MMBTRA106SS

PNP Silicon Epitaxial Planar Transistor

for switching and interface circuit and drive circuit applications

Features

- With built-in bias resistors
- Simplify circuit design
- Reduce a quantity of parts and manufacturing process



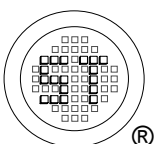
1. Base 2. Emitter 3. Collector
SOT-23 Plastic Package

Resistor Values

Type	R1 (KΩ)	R2 (KΩ)
MMBTRA101SS	4.7	4.7
MMBTRA102SS	10	10
MMBTRA103SS	22	22
MMBTRA104SS	47	47
MMBTRA105SS	2.2	47
MMBTRA106SS	4.7	47

Absolute Maximum Ratings ($T_a = 25\text{ }^\circ\text{C}$)

Parameter		Symbol	Value	Unit
Output Voltage		$-V_o$	50	V
Input Voltage	MMBTRA101SS	$-V_i$	20, -10	V
	MMBTRA102SS		30, -10	
	MMBTRA103SS		40, -10	
	MMBTRA104SS		40, -10	
	MMBTRA105SS		12, -5	
	MMBTRA106SS		20, -5	
Output Current		$-I_o$	100	mA
Total Power Dissipation		P_{tot}	200	mW
Junction Temperature		T_j	150	$^\circ\text{C}$
Storage Temperature Range		T_s	- 55 to + 150	$^\circ\text{C}$



SEMTECH ELECTRONICS LTD.

(Subsidiary of Sino-Tech International Holdings Limited, a company listed on the Hong Kong Stock Exchange, Stock Code: 724)



ISO/TS 16949 : 2002
Certificate No. 05103



ISO 14001:2004
Certificate No. 71116



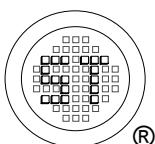
ISO 9001:2000
Certificate No. 0506098

MMBTRA101SS...MMBTRA106SS

Characteristics at $T_a = 25\text{ }^\circ\text{C}$

Parameter	Symbol	Min.	Typ.	Max.	Unit
DC Current Gain at $-V_O = 5\text{ V}$, $-I_O = 10\text{ mA}$					
MMBTRA101SS	G _I	30	-	-	-
MMBTRA102SS		50	-	-	-
MMBTRA103SS		70	-	-	-
MMBTRA104SS		80	-	-	-
MMBTRA105SS		80	-	-	-
MMBTRA106SS		80	-	-	-
Output Cutoff Current at $-V_O = 50\text{ V}$	$-I_{O(OFF)}$	-	-	500	nA
Input Current at $-V_I = 5\text{ V}$					
MMBTRA101SS	-I _I	-	-	1.8	mA
MMBTRA102SS		-	-	0.88	
MMBTRA103SS		-	-	0.36	
MMBTRA104SS		-	-	0.18	
MMBTRA105SS		-	-	3.6	
MMBTRA106SS		-	-	1.8	
Output Voltage at $-I_O = 10\text{ mA}$, $-I_I = 0.5\text{ mA}$	$-V_{O(ON)}$	-	-	0.3	V
Input Voltage (ON) at $-V_O = 0.2\text{ V}$, $-I_O = 5\text{ mA}$					
MMBTRA101SS	$-V_{I(ON)}$	-	-	2	V
MMBTRA102SS		-	-	2.4	
MMBTRA103SS		-	-	3	
MMBTRA104SS		-	-	5	
MMBTRA105SS		-	-	1.1	
MMBTRA106SS		-	-	1.3	
Input Voltage (OFF) at $-V_O = 5\text{ V}$, $-I_O = 0.1\text{ mA}$					
MMBTRA101SS~104SS	$-V_{I(OFF)}$	1	-	-	V
MMBTRA105SS~106SS		0.5	-	-	
Transition Frequency at $-V_O = 10\text{ V}$, $-I_O = 5\text{ mA}$	f_T ¹⁾	-	200	-	MHz

¹⁾ Characteristic of transistor only.



SEMTECH ELECTRONICS LTD.

(Subsidiary of Sino-Tech International Holdings Limited, a company listed on the Hong Kong Stock Exchange, Stock Code: 724)



ISO/TS 16949 : 2002
Certificate No. 05103



ISO 14001:2004
Certificate No. 7116



ISO 9001:2000
Certificate No. 0506098

Dated : 08/12/2006