

FEATURES AND SPECIFICATIONS



12.00mm (.472") Pitch EuroMax™ High-Power Pluggable Terminal Blocks

- 39421** Horizontal Plug
- 39422** Horizontal Plug With Mounting Ends
- 39425** Right-Angle Header
- 39426** Right-Angle Header With Mounting Ends

Take power to the max with the new EuroMax™ high-power pluggable terminal blocks

EuroMax terminal blocks are the highest amperage pluggable terminal blocks currently available on the market, offering up to 85.0A per circuit at 600V. Available in 2 to 10 circuits, with a wire range of 3 to 14 AWG, the EuroMax terminal blocks are an exciting addition to our popular 600V one-piece fixed high-power terminal blocks (Series 39910, 39920, 39950 and 39960). EuroMax terminal blocks provide an additional advantage of pluggability for easy servicing or field repair and replacement.

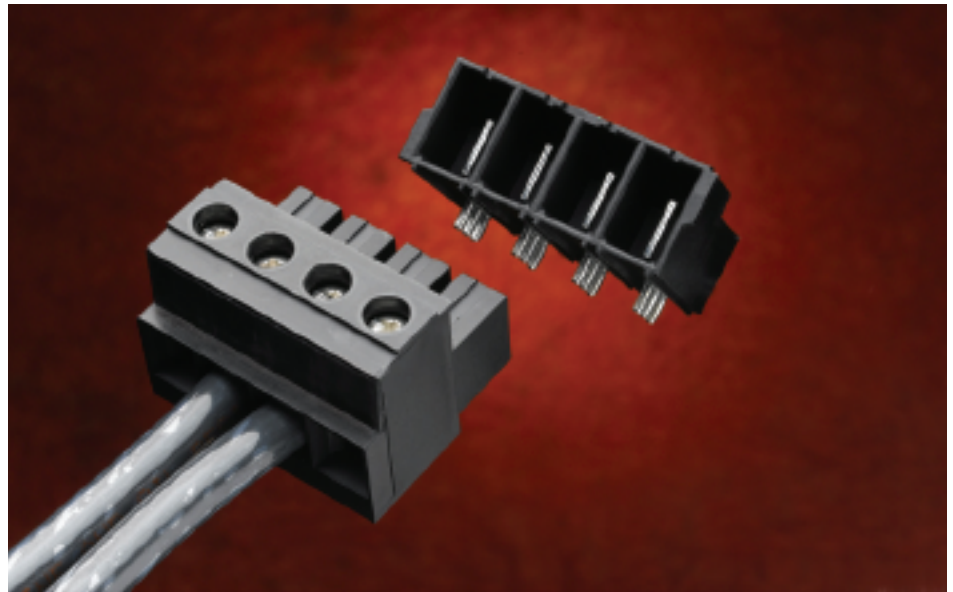
The two-piece pluggable connection system features a highly redundant parallel contact system to maximize performance. All hardware components are copper-based alloys to optimize thermal compatibility. The high-temperature housing material withstands lengthy solder pre-heat conditions. In addition, the header blade has 3 PCB tails, allowing for a robust connection to the PCB. A screw-driver slot is built-in on circuit

Features and Benefits

- Rising-cage pressure-clamp termination compresses wires evenly, providing a secure contact without wire damage
- High-temperature housing material is able to withstand lengthy solder pre-heat conditions
- Pluggable design provides easy servicing or replacement of device in the field
- Stamped, one-piece terminals improve cost efficiency
- Header blade has 3 PCB tails, providing a robust connection to PCB

counts of 4 or higher to help ease de-plugging. Reliable, economically stamped, one-piece terminals offer cost efficiency. They are also available with mounting ends for added security.

EuroMax terminal blocks combine the benefits of high-power terminal blocks with the convenience of a pluggable design.



EuroMax Terminal Block without mounting ends

SPECIFICATIONS

Reference Information

Packaging: Box
UL File No.: E48521
Guide No.: XCFR2
UL for Canada File No.: E48521
Guide No.: XCFR8

Electrical

Voltage: 600V
Current: 85.0A
Dielectric Withstanding Voltage: 8500V DC min.
Insulation Resistance: 5,000 Megohms min.

Mechanical

Wire Range: 3 to 14 AWG (21.20 to 2.08mm²)
Strip Length: 16.00mm (.630 inch)
Tightening Torque: 2.70Nm (24 in-lbs)
Screwdriver: .25" Slotted, #2 Pozi

Physical

Plugs:
Housing: Polybutylene Terephthalate (PBT)
Valox* 420 SEO, Black
Contact: Copper Alloy
Contact Plating: Tin
Screw: M5 Pan head, slotted, Silicon Bronze
Screw Plating: Tin
Pressure Clamp: Brass
Pressure Clamp Plating: Nickel

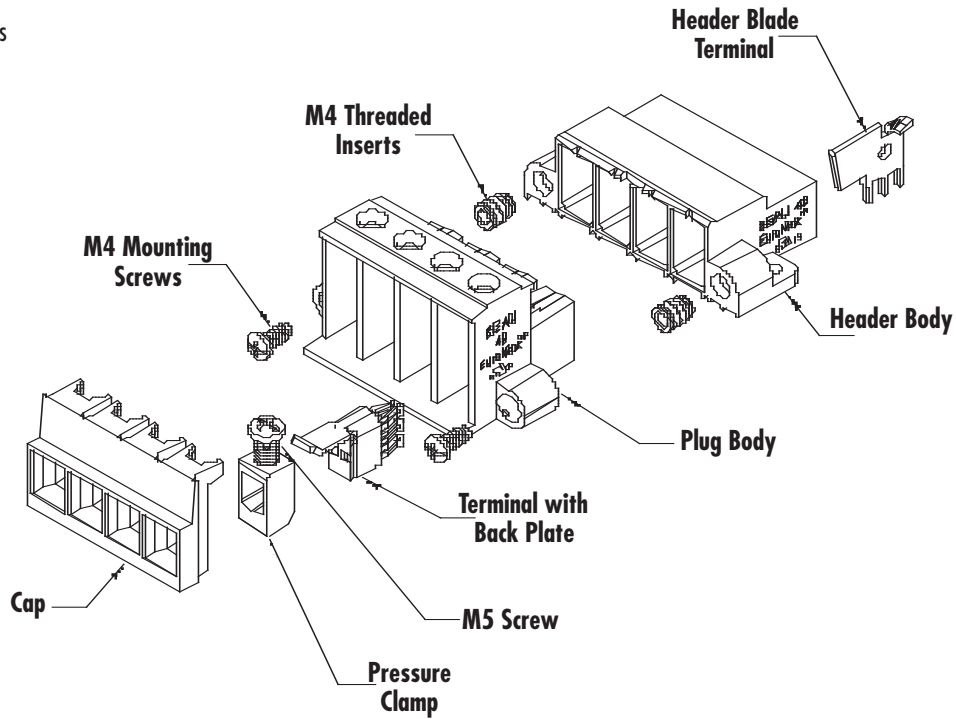
Headers:
Housing: Polyamide 6/6, Black
Contact: Copper Alloy
Contact Plating: Tin
Operating Temperature: +130°C

*Valox is a registered trademark of GE Plastics



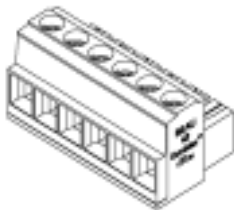
12.00mm (.472") Pitch EuroMax™ High-Power Pluggable Terminal Blocks

- Motors and drives
- Power controls and converters
- Process controls
- Invertors
- Distributed power systems
- Cellular base stations
- Load control systems
- Solar power systems
- Fuel cells

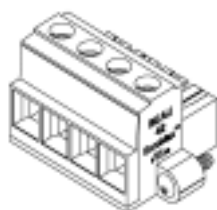


ORDERING INFORMATION

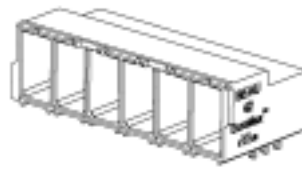
Circuits	Order No.			
	Horizontal Plug		Right-Angle Header	
	Without Mounting Ends	With Mounting Ends	Without Mounting Ends	With Mounting Ends
2	39421-0002	39422-0002	39425-0002	39426-0002
3	39421-0003	39422-0003	39425-0003	39426-0003
4	39421-0004	39422-0004	39425-0004	39426-0004
5	39421-0005	39422-0005	39425-0005	39426-0005
6	39421-0006	39422-0006	39425-0006	39426-0006
7	39421-0007	39422-0007	39425-0007	39426-0007
8	39421-0008	39422-0008	39425-0008	39426-0008
9	39421-0009	—	39425-0009	—
10	39421-0010	—	39425-0010	—



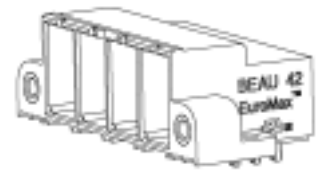
**Horizontal Plug
Series 39421**



**Horizontal Plug with Mounting Ends
Series 39422**



**Right-Angle Header
Series 39425**



**Right-Angle Header with Mounting Ends
Series 39426**

Americas Headquarters
Lisle, Illinois 60532 U.S.A.
1-800-78MOLEX
amerinfo@molex.com

Far East North Headquarters
Yamato, Kanagawa, Japan
81-462-65-2324
feninfo@molex.com

Far East South Headquarters
Jurong, Singapore
65-6-268-6868
fesinfo@molex.com

European Headquarters
Munich, Germany
49-89-413092-0
eurinfo@molex.com

Corporate Headquarters
2222 Wellington Ct.
Lisle, IL 60532 U.S.A.
630-969-4550
Fax:630-969-1352

Visit our Web site at <http://www.molex.com/product/tblocks/euromax.html>