



**Data Sheet**



Product Category: IF SAW Filter

Part Number	Package	Application	Last Modified
813-SL140.0M-10B	13.3 x 6.5 SMD	Base Station & Repeater	Apr 18, 2007

TYPE :  
140.0 MHz Bandpass Filter  
Low Loss



PART NUMBER :  
**813-SL140.0M-10B**

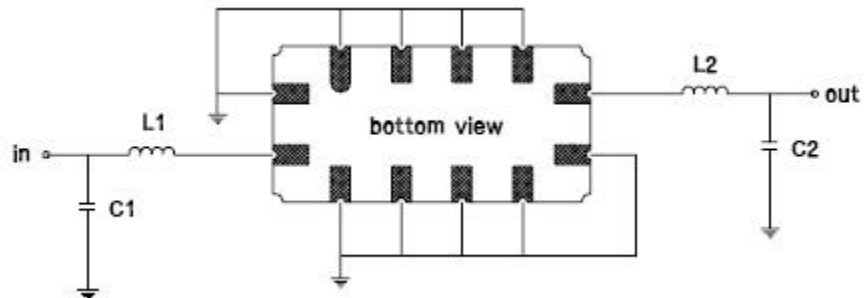
**OPERATING CONDITIONS / ELECTRICAL CHARACTERISTICS**

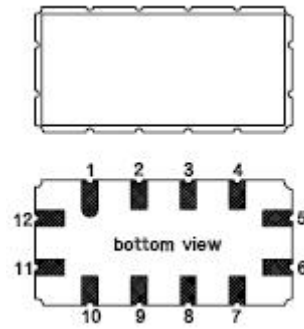
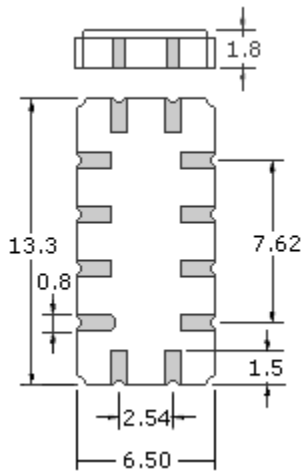
PARAMETERS	Minimum	Typical	Maximum	Units
Center Frequency	139.85	140.0	140.15	MHz
Insertion Loss at Fo	-	13.6	15.0	dB
Source Impedance (single ended)*	-	50	-	ohm
Load Impedance (single ended)*	-	50	-	ohm
Bandwidth at -1.0 dB	9.1	9.3	-	MHz
Bandwidth at -3.0 dB	9.9	10.1	-	MHz
Bandwidth at -40.0 dB	-	12.9	13.1	MHz
Bandwidth at -45.0 dB	-	13.2	14.0	MHz
Relative Attenuation:	-			
Lower Sidelobe	45	48	-	dB
Upper Sidelobe	41	45	-	dB
Amplitude Ripple	-	0.4	1.0	dBp-p
Group Delay Variation	-	64	100	nsec
Absolute Delay at Fo	-	0.97	-	µsec
Temperature Coefficient	-	-	-94	ppm/°C

\*With Matching Network (Reference Testing Environment Circuit as shown) Modify Impedance Values as necessary.

**PACKAGE OUTLINE (mm)**

**TEST FIXTURE**

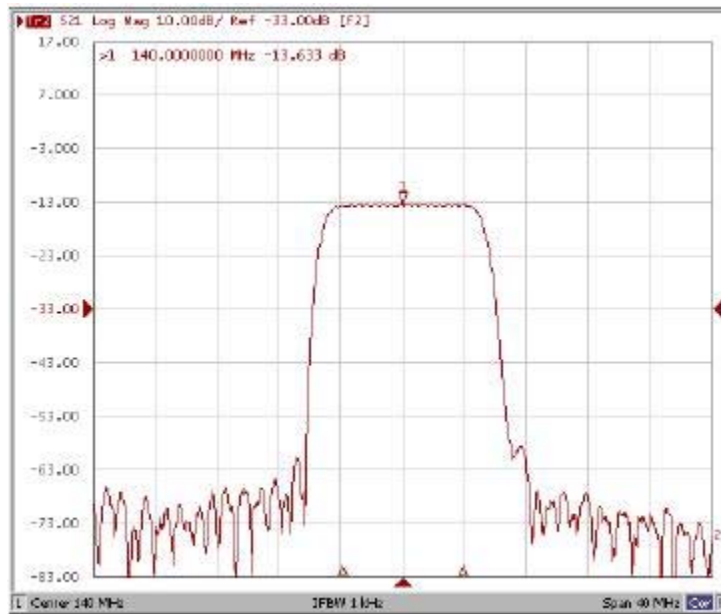




PIN Description IN-11,OUT-5,GROUND-1,2,3,4,6,7,8,9,10,12

Test Fixture & Values	
Input	L1=47nH Q >40, C1=51pF
Output	L2=47nH Q.>40, C2=51pF

### FREQUENCY RESPONSE



**Oscilent Corporation** - CALL **949.252.0522**  
 18195 East McDermott Street, Building D, Irvine, CA 92614, USA  
 Fax: 949.252.0599, E-Mail: Sales@Oscilent.com

**Part No.:** 813-SL140.0M-10B