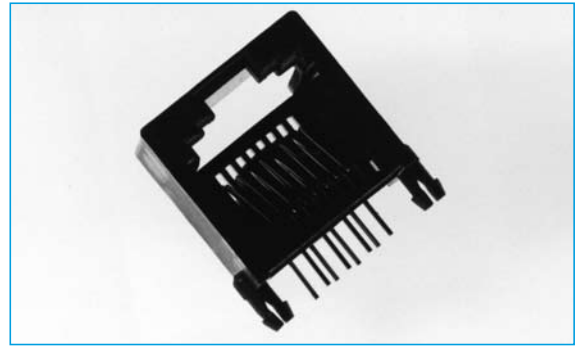


NETWORKING SOCKETS

MODULAR SOCKETS - LOW PROFILE

- Low profile
- Industry standard footprint
- 4, 6 and 8 way side entry
- UL approved



SPECIFICATION

Material

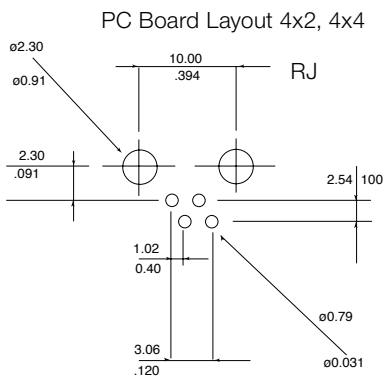
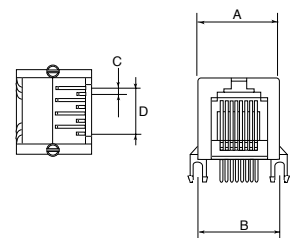
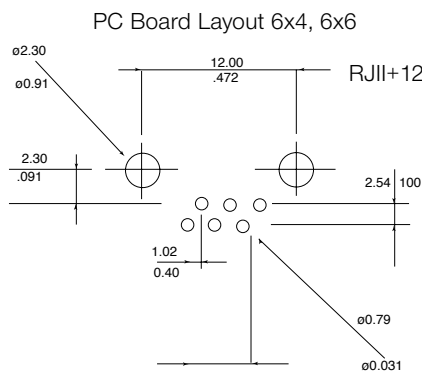
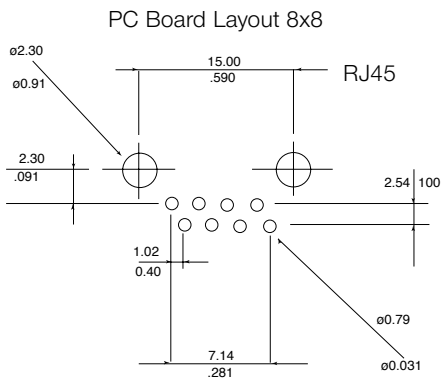
Housing:

PBT Polyester, UL94V-O; UL94V-2
Standard colour grey

Contacts:

.0177(.45mm) diameter
Pros - bronze plated with hard gold
Cavity conforms to FCC Rules and
Regulations Part 68, subpart F

OUTLINE DRAWING



Circuits	Loaded Contacts	Dimensions			
		a	B	C	D
4	2	10.00 (.394)	10.00 (.394)	1.02 (.040)	3.06 (.120)
4	4	10.00 (.394)	10.00 (.394)	1.02 (.040)	3.06 (.120)
6	4	12.20 (.480)	12.00 (.472)	1.02 (.040)	5.10 (.201)
6	6	12.20 (.480)	12.00 (.472)	1.02 (.040)	5.10 (.201)
8	8	15.00 (.590)	15.00 (.590)	1.02 (.040)	7.14 (.281)

ORDERING INFORMATION

DBC	RJ45	S	88	A
Dubilier Connectors	Series	Contact Type	N° of Ways x N° of Loaded Contacts	Style
	RJ	S=Socket	4x2	A=Low profile
	RJ		4x4	Skt
	RJ11		6x4	
	RJ12		6x6	
	RJ45		8x8	