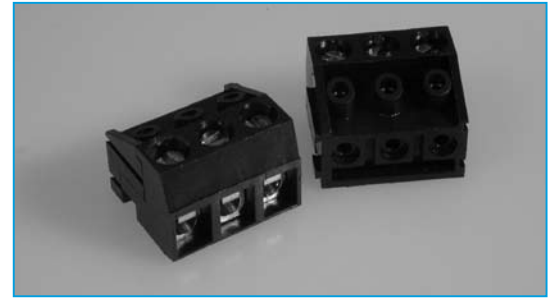


TERMINAL BLOCKS

- 2-12 Pole Interlocking
- Test probe facility
- Interchangeable
- 1.5mm² wire acceptance
- Horizontal or vertical mounting
- UL/ CSA approved

PLUG - IN 5mm VERTICAL OR HORIZONTAL

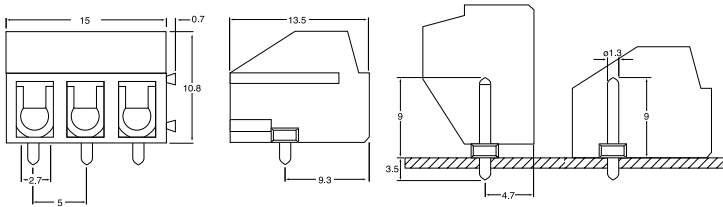


SPECIFICATION

Rating: 10A/380v
Dielectric Strength: >2.5Kv
Insulation Resistance: >5MΩ
Working temperature: -33°C to 120°C
Short Period: 160°

Moulding: UL94V-0 flame retardant glass filled Polyester
Terminal: 5 micron tinned copper flashed brass
Wire Protect: Beryllium copper
Screw/torque: M2.6 steel/4Nm zinc colour passivated & tropicalised

OUTLINE DRAWING



ORDERING INFORMATION

DBC	TB	26	/12
Dubilier Connectors	Series Terminal Block	Style	N° of Ways
			2 = 2 ways 3 = 3 ways
* Other Number of ways are available up to 12 Please consult office for further details			

TERMINAL BLOCKS

- Supplied in 24 Way
- Cut to required size
- Flame retardant material

24 PIN SPACING

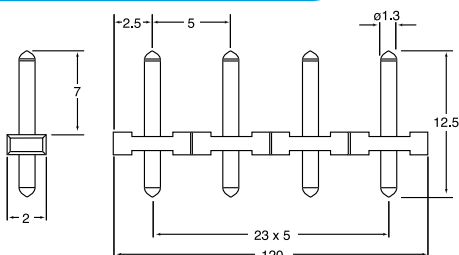


SPECIFICATION

Rating: 10A/380V
Contact resistance: KB 380 according to VDE 0110
Working temperature: -33°C to 120°C
Short Period: 160°
Moulding: UL94V-0 flame retardant glass filled Polyester
Pins: 7 micron tinned, nickel plated brass

Recommended PCB hole size: ø1.5mm

OUTLINE DRAWING



ORDERING INFORMATION

DBC	TB	30	/24
Dubilier Connectors	Series Terminal Block	Style	N° of Ways
			24 = 24 ways(standard)
* Other Number of ways are available up to 24 Please consult office for further details			