

# AC Power Line Choke

## EPZ3061LP-XXX

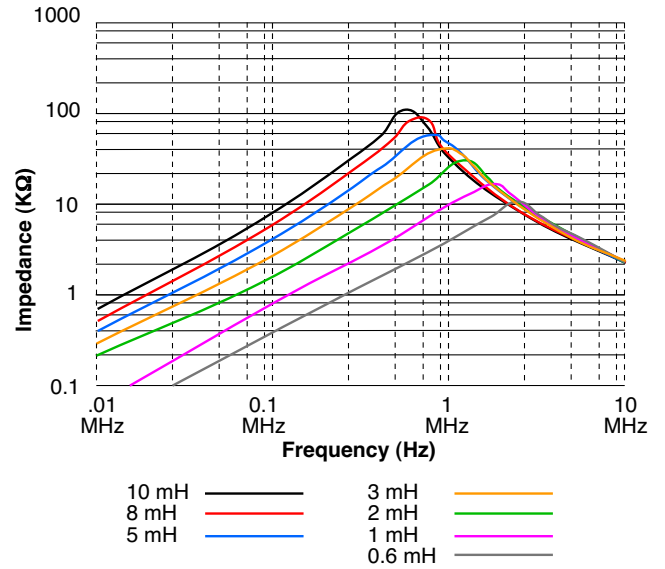
- Used as AC Power Line Filters in CTV, VTR, Audios, PC's, Facsimilies and Power Supply Applications
- Applicable Frequency : 0.2 MHz to 30 MHz
- Low Profile In Vertical Core Layout
- UL940-V Recognized Materials
- UL1446 Insulating System
- 4-Section Bobbin

### Electrical Parameters @ 25° C

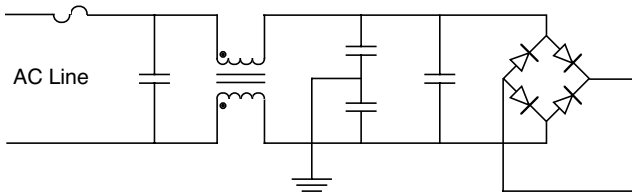
Part Number	Inductance (mH Min.) [Pins 1-2, 4-3]	Current Rating (A rms Max.)
EPZ3061LP-901	0.9	2.0
EPZ3061LP-132	1.3	1.7
EPZ3061LP-182	1.8	1.5
EPZ3061LP-202	2.0	1.3
EPZ3061LP-362	3.6	1.0
EPZ3061LP-772	7.7	0.7
EPZ3061LP-133	13	0.5
EPZ3061LP-223	22	0.4
EPZ3061LP-363	36	0.3

• Isolation : 2000 Vrms • Temperature Rise : 60°C Max. •

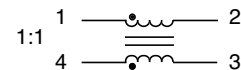
### Impedance Characteristics



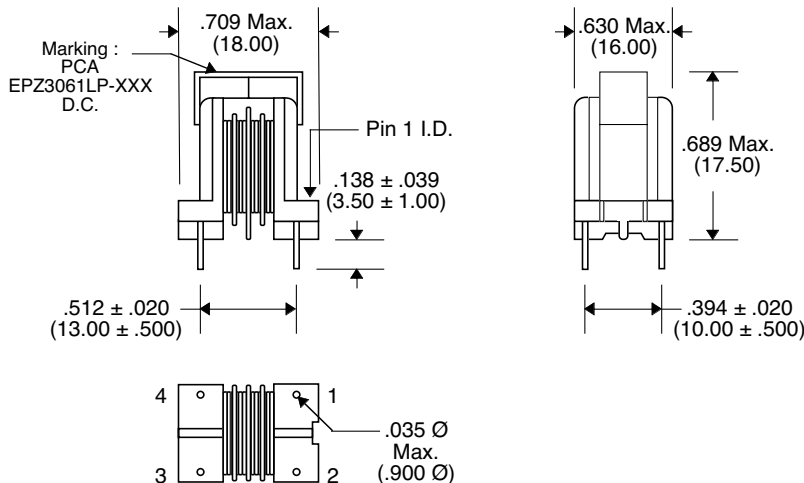
### Circuit Sample



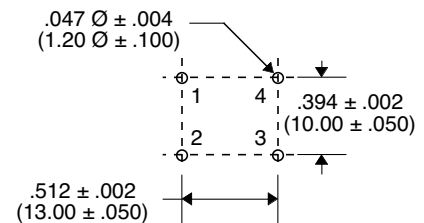
### Schematic



### Package



### Recommended PWB Piercing Plan



Unless Otherwise Specified Dimensions are in Inches /mm ± .010 / .25