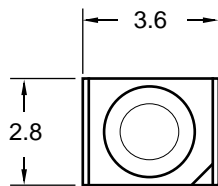


# Surface Mount LED J Series for low current or superbright use, 0678 Series Top LED



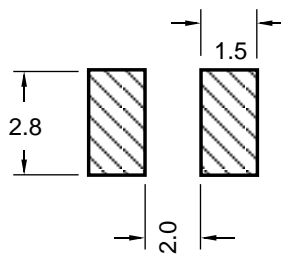
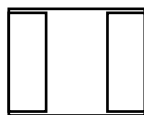
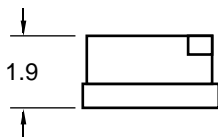
The 0678 series lamps are miniature chip type designed for surface mounting. These lamps are the so-called "Top LED" type, measuring approximately 2.8 x 3.6 mm. These lamps are in EIA481 tape and reel packaging with approximately 2000 pcs per reel.



Cathode (except for ISRC0678 & IURC0678 where polarity is reversed)



RoHS Compliant  
Aug 2004



Recommended  
reflow  
solder pattern

## GENERAL INFORMATION

Operating Temperature Range	-40 °C to +85 °C
Storage Temperature Range	-40 °C to +90 °C
Reflow Soldering Temperature	260 °C for 5 sec max

Part No.	Emitted Color	Peak	$\Delta\lambda$	Absolute Maximum Ratings					E/O Characteristics					
		$\lambda$		Pd (mW)	If (mA)		Ir @Vr=5V ( $\mu$ A)	Vr (V)	Iv (mcd) @If=20mA			Vf (V) @ If=20mA		$2\Theta_{1/2}$ (Deg)
		(nM)	dc		1/10 duty @ 1 kHz	2mA			Min	Typ	Min	Typ		
JRC0678	Red	632	20	60	25	160	10	5	4	25	61	2.0	2.4	120
JGC0678	Green	575	20	60	25	160	10	5	1	17	25	2.0	2.4	120
JYC0678	Yellow	591	15	60	25	160	10	5	4	25	62	2.0	2.4	120
JOC0678	Orange	621	18	60	25	160	10	5	4	25	62	2.0	2.4	120
JEC0678	OrRed	639	20	60	25	160	10	5	3	23	49	2.0	2.4	120
JYOC0678	YelOrng	611	17	60	25	160	10	5	4	25	62	2.0	2.4	120

Specifications subject to change without notice. Dimensions are in mm $\pm$ 0.3 unless stated otherwise.

IDEA, Inc., 1351 Titan Way, Brea, CA 92821 Ph:714-525-3302, 800-LED-IDEA; Fax: 714-525-3304 0508

013S-J0678