

PRINCIPAL SPECIFICATIONS

Model Number	Frequency Range, MHz	Freq. Perform., MHz	Isolation, dB,		Insertion Loss, dB,		Phase Balance,		Amplitude Bal., dB,		VSWR, (In/Output)		Weight oz.(g) Nom.
			Min.	Typ.	Max.	Typ.	Max.	Typ.	Max.	Typ.	Max.	Typ.	
PDNL-30-500	50 - 1000	50 - 800 800 - 1000	20	25	1.5	0.8	8°	3°	0.5	0.3	1.5:1	1.3:1	6.75(191)
			20	25	2.2	1.5	10°	5°	0.7	0.5	1.7:1	1.4:1	

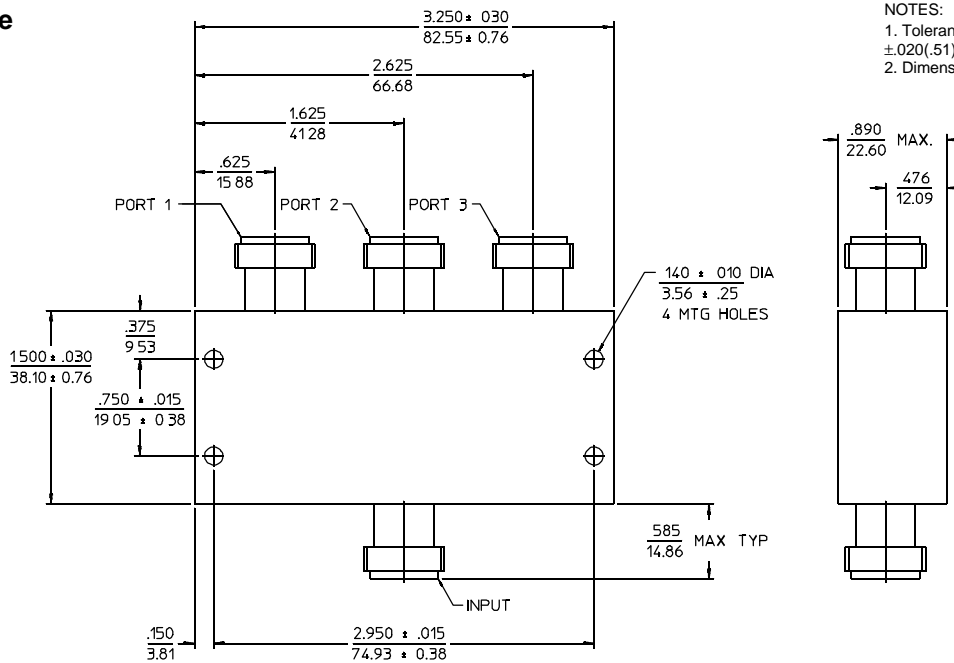
General Notes:

1. The PDNL-30-500 In-Line 3-way Power Divider/Combiner covers 50 to 1000 MHz using high performance lumped element designs. Standard versions are generally available from stock while models with closer tolerances are available upon special order.

GENERAL SPECIFICATIONS

Nominal Coupling: - 4.8 dB
 Impedance: 50 Ω nom.
 CW Input Power: 1W max.
(When used as divider with 1.2:1 VSWR_{out})
 Internal Load Dissipation: 250 mW max.
 Operating Temperature: - 55° to +85°C

Package Outline



NOTES:
 1. Tolerance on 3 place decimals ±.020(.51) except as noted.
 2. Dimensions in inches over millimeters.

29Apr96