

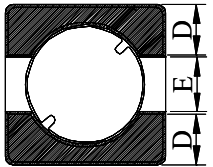
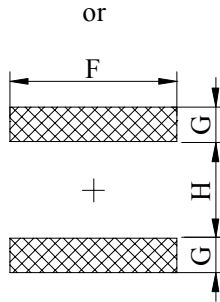
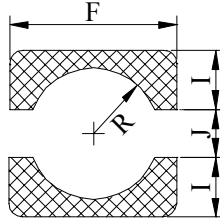
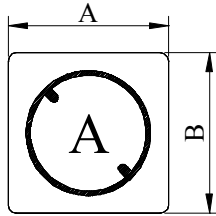
SPECIFICATION FOR APPROVAL

REF : 20070101-A

PAGE: 1

PROD. NAME	SHIELDED SMD POWER INDUCTOR	ABC'S DWG NO.	SH2009□□□□L□-□□□
		ABC'S ITEM NO.	

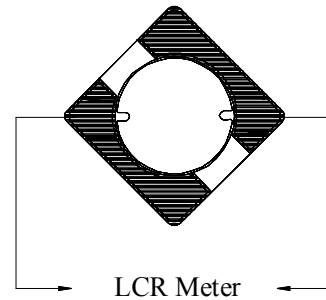
. CONFIGURATION & DIMENSIONS :



(PCB Pattern Suggestion)

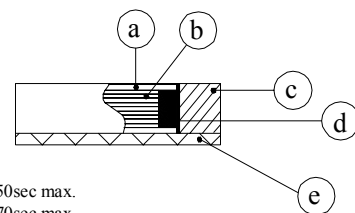
- A : 2.60 ±0.20 m/m
- B : 2.60 ±0.20 m/m
- C : 0.90 ±0.10 m/m
- D : 0.80 typ m/m
- E : 0.90 typ m/m
- F : 2.90 ref m/m
- G : 0.70 ref m/m
- H : 1.70 ref m/m
- I : 1.00 ref m/m
- J : 0.90 ref m/m
- R : 0.90 ref m/m

. SCHEMATIC DIAGRAM :



. MATERIALS :

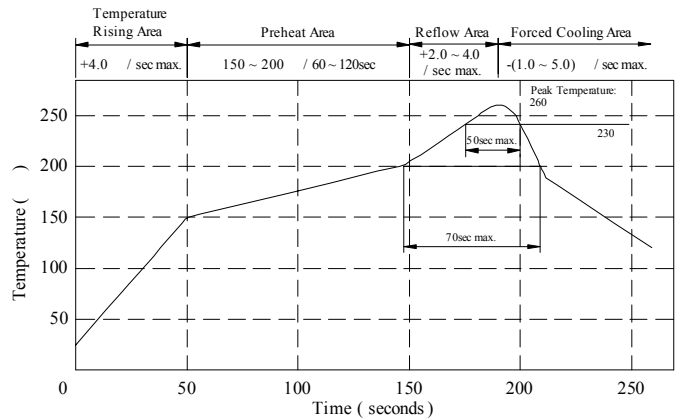
- a . Core : Ferrite DR core
- b . Core : Ferrite RI core
- c . Wire : Enamelled copper wire (Class H)
- d . Adhesive : Epoxy resin
- e . Terminal : Ag/Ni/Sn
- f . Remark : Products comply with RoHS' requirements



Peak Temp : 260 max.
 Max time above 230 : 50sec max.
 Max time above 200 : 70sec max.

. GENERAL SPECIFICATION :

- a . Temp. rise : 40 max.
- b . Storage temp. : -40 ----+125
- c . Operating temp. : -40 ----+105
- d . Resistance to solder heat : 260 .10 secs.



AR-001A

SPECIFICATION FOR APPROVAL

REF : 20070101-A

PAGE: 2

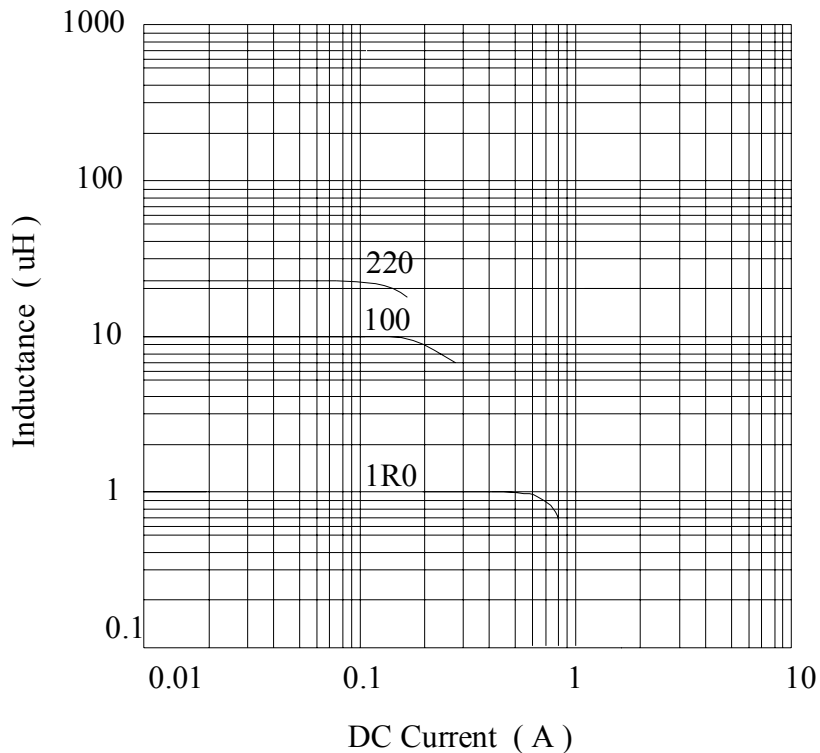
PROD. NAME	SHIELDED SMD POWER INDUCTOR	ABC'S DWG NO.	SH2009□□□□L□-□□□
		ABC'S ITEM NO.	

. ELECTRICAL CHARACTERISTICS :

DWG No.	Inductance (μ H)	Q ref.	Test Freq. (MHz)	SRF (MHz) typ.	RDC (m Ω)		I _{rms} (mA) max.	I _{sat} (mA) typ.	Marking
					typ.	max.			
SH20091R0YL□ -□□□	1.0 \pm 30 %	6	7.96	210	80	105	1450	780	A
SH20092R2YL□ -□□□	2.2 \pm 30 %	6	7.96	135	160	205	1100	540	C
SH20093R3YL□ -□□□	3.3 \pm 30 %	6	7.96	110	220	290	860	430	E
SH20094R7YL□ -□□□	4.7 \pm 30 %	6	7.96	90	330	430	620	370	F
SH20096R8YL□ -□□□	6.8 \pm 30 %	6	7.96	70	445	580	540	270	G
SH2009100YL□ -□□□	10.0 \pm 30 %	8	2.52	55	650	850	470	240	H
SH2009150YL□ -□□□	15.0 \pm 30 %	10	2.52	50	935	1220	350	200	I
SH2009220YL□ -□□□	22.0 \pm 30 %	10	2.52	35	1700	2210	250	150	J

- 1). □ : Packaging Information... [A]: Bulk [B]: Taping Reel
- 2). "- □□□ " : Reference code
- 3). Inductance Test Freq. : 100KHz /0.1V
- 4). I_{rms} base on Temp. rise 40 max.
- 5). I_{sat} base on L / LOA=35% typ.

@ Inductance VS. DC Current Curve



AR-001A

SPECIFICATION FOR APPROVAL

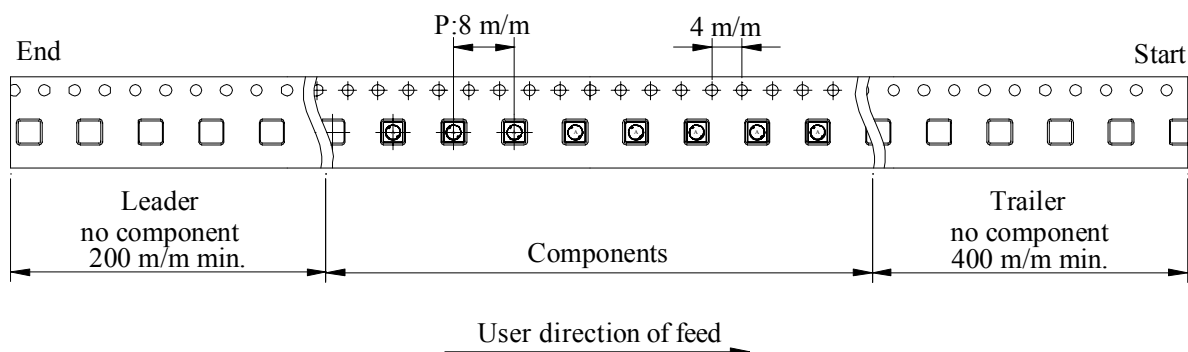
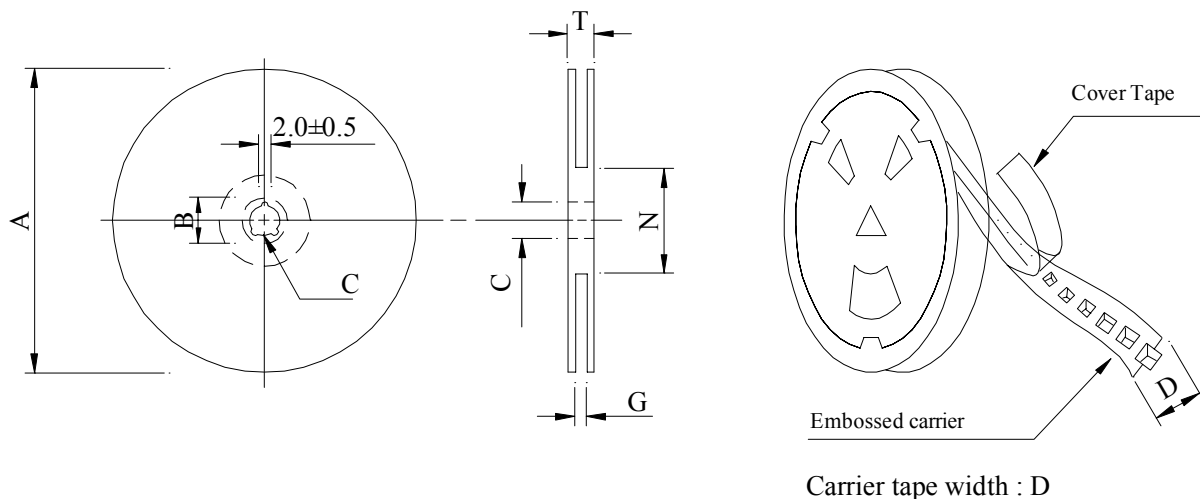
REF : 20070101-A

PAGE: 3

PROD. NAME	SHIELDED SMD POWER INDUCTOR	ABC'S DWG NO.	SH2009□□□□L□-□□□
		ABC'S ITEM NO.	

. PACKAGING INFORMATION :

(1) Configuration



(2) Dimensions

Unit:m/m

Style	A	B	C	D	G	N	T
07 - 12	178	21±0.8	13	12	14 ⁺⁰	50 ⁻⁰	16.5

(3) Q'TY & G.W. Per package

Series	Inner : Reel			Outer : Carton		
	Q'TY (pcs)	G.W. (gw)	Style	Q'TY (pcs)	G.W. (Kg)	Size (cm)
SH2009	1,500	120	07 - 12	60,000	4.8	42 x 41 x 24

AR-001A

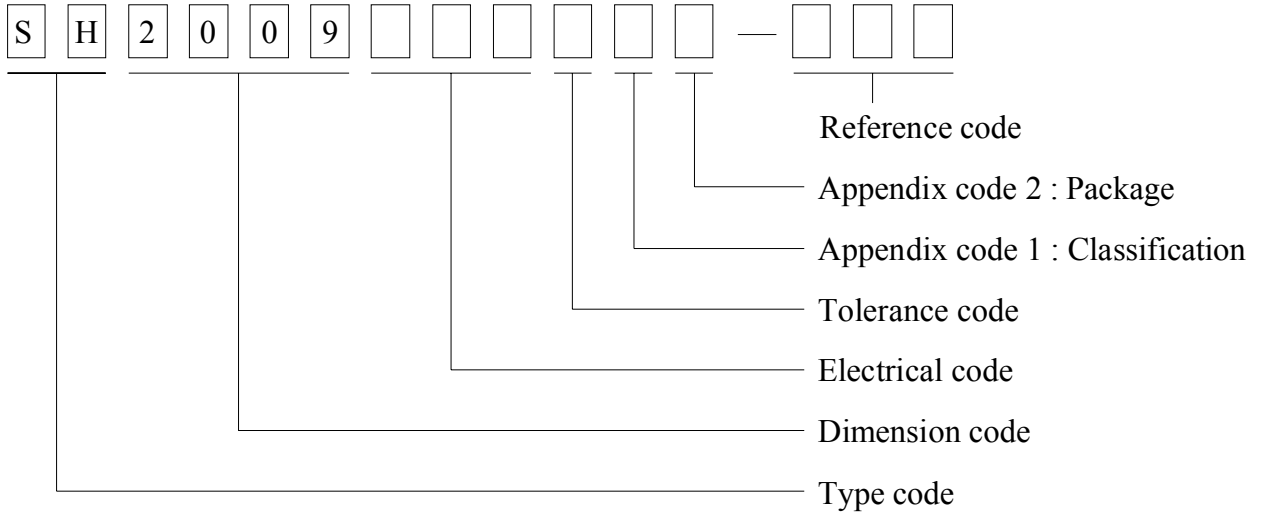
SPECIFICATION FOR APPROVAL

REF : 20070101-A

PAGE: 4

PROD. NAME	SHIELDED SMD POWER INDUCTOR	ABC'S DWG NO.	SH2009□□□□L□-□□□
		ABC'S ITEM NO.	

. DWGING NUMBER EXPRESSION :



Appendix code 1 : Product Classification

L : Lead Free Standard products comply with RoHS' requirements
1 ~ 9 : Lead Free Special products comply with RoHS' requirements

Appendix code 2 : Package Information

Code	Inner package	Inner package Q'TY	Remark
A	T.B.D.	T.B.D.	
B	T / R (Reel package)	1,500 pcs	

AR-001A



SPECIFICATION FOR APPROVAL

REF : 20070101-A

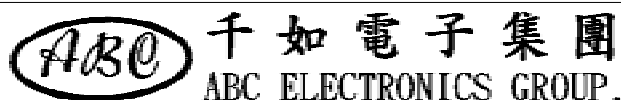
PAGE: 5

PROD. NAME	SHIELDED SMD POWER INDUCTOR	ABC'S DWG NO.	SH2009□□□□L□-□□□
		ABC'S ITEM NO.	

. RELIABILITY TEST :

Test item	Specification	Test condition						
Solderability	More than 90% of the terminal electrode shall be covered With fresh solder.	Preheat : 150±25 for 60 seconds Solder : Sn96.5 / Ag3 / Cu0.5 or equivalent Solder temp. : 235±5 Flux : Rosin Dip time : 4±1 seconds						
Thermal shock test (Temp. cycle)	Inductance shall not change more than ±20%	<table style="width: 100%; border: none;"> <tr> <td style="text-align: center; border: none;">Room temp. 15 minutes</td> <td style="text-align: center; border: none;">→</td> <td style="text-align: center; border: none;"><u> -25±2 </u> 30 minutes</td> </tr> <tr> <td style="text-align: center; border: none;">Room temp. 15 minutes</td> <td style="text-align: center; border: none;">→</td> <td style="text-align: center; border: none;"><u> 85±2 </u> 30 minutes</td> </tr> </table> <p>Total : 50 cycles</p>	Room temp. 15 minutes	→	<u> -25±2 </u> 30 minutes	Room temp. 15 minutes	→	<u> 85±2 </u> 30 minutes
Room temp. 15 minutes	→	<u> -25±2 </u> 30 minutes						
Room temp. 15 minutes	→	<u> 85±2 </u> 30 minutes						
Humidity Resistance test		Temperature : 40±2 Humidity : 90 ~ 95% Applied current : Per spec. Time : 500 hours						
High temp. Resistance test		Temperature : 105±2 Applied current : Per spec. Time : 500 hours						

AR-001A



SPECIFICATION FOR APPROVAL

REF : 20070101-A

PAGE: 6

PROD. NAME	SHIELDED SMD POWER INDUCTOR	ABC'S DWG NO.	SH2009□□□□L□-□□□
		ABC'S ITEM NO.	

. UL CARD :

OBMW2 October 06, 2005

Magnet Wire-Component

ELEKTRISOLA (MALAYSLA) SDN BHD E143312

JALAN DAMAI SATU JANDA BAIK 28750 BENTONG, PAHANG
DARUL MAKMUR MALAYSIA

Mtl Dsg	Mark Dsg	Coating Type		ANSI Typ	Temp Class
		BC	OC		
Estersol 180	E180	Polyesterimide (solderable)	—	MW-77	180
Amldester 200	A200	Polyesterimide	—	MW-74	200
Polysol-N 155	PN155	Polyurechane	Nylon	MW-80, MW-28	155, 130
Polysol 155	P155, G155	Polyurechane	—	MW-79, MW-75	155, 130
Polysol 155g	Pg155	Polyurechane	—	MW-75	130
Polysol 155p	Pp155,Gp155	Polyurechane	—	MW-79	155
Polysol 160	P160	Polyurechane	—	MW-79	155
Polysol 180	P180,G180	Polyurechane	—	MW-82	180
Polysol 170	P170 or G170	Polyurechane	—	MW-79	155
Polysol-N 180	PN180	Polyurechane	Nylon	MW-83	180
Polysol P155p	P155p	Polyurechane	—	MW-79	155

Marking : Company name, material designation or marked designation and factory identification on package ok reel

See General Information preceding These Recognitions
For use only in equipment where the acceptability of the combination is determined by Underwriters Laboratories Inc.