

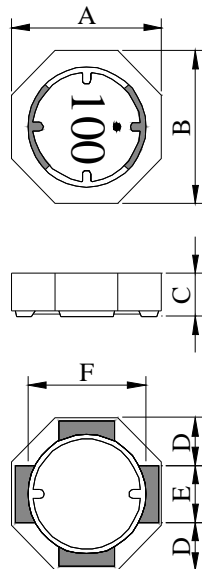
SPECIFICATION FOR APPROVAL

REF :20091008-B

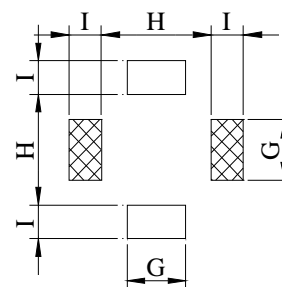
PAGE: 1

PROD. NAME	SHIELDED SMD POWER INDUCTOR	ABC'S DWG NO.	SU5028□□□□2□-□□□
		ABC'S ITEM NO.	

I . CONFIGURATION & DIMENSIONS :

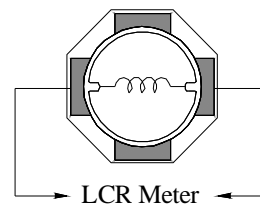
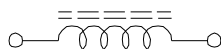


A :	5.20	±0.20	m/m
B :	5.20	±0.20	m/m
C :	2.80	±0.20	m/m
D :	1.70	typ.	m/m
E :	1.80	typ.	m/m
F :	3.90	typ.	m/m
G :	2.00	ref.	m/m
H :	3.70	ref.	m/m
I :	1.10	ref.	m/m



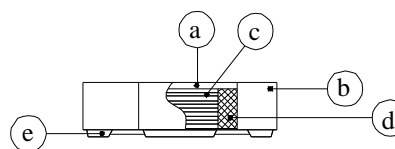
(PCB Pattern Suggestion)

II . SCHEMATIC DIAGRAM :



III . MATERIALS :

- a . Core : Ferrite DR core
- b . Core : Ferrite RI core
- c . Wire : Enamelled copper wire (class F & H)
- d . Adhesive : Epoxy resin
- e . Terminal : Ag/Ni/Sn
- f . Remark : Products comply with RoHS'

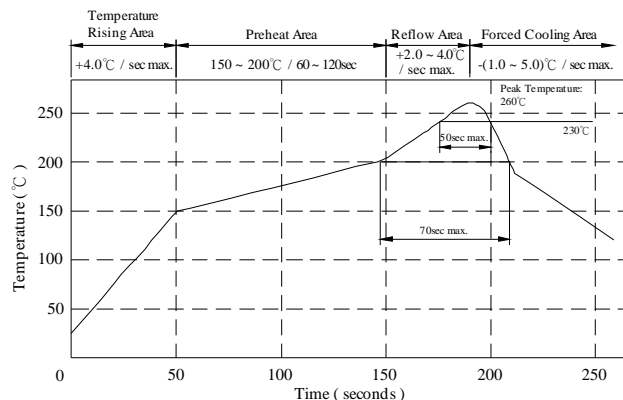


requirements

IV . GENERAL SPECIFICATION :

- a . Temp. rise : 40°C typ.
- b . Rated current :
Base on temp. rise & $\Delta L / L0A=35\%$ typ.
- c . Storage temp. : -40°C ----+125°C
- d . Operating temp. : -40°C ----+105°C
- e . Resistance to solder heat : 260°C.10 secs.

Peak Temp : 260°C max.
Max time above 230°C : 50sec max.
Max time above 200°C : 70sec max.



AR-001A

SPECIFICATION FOR APPROVAL

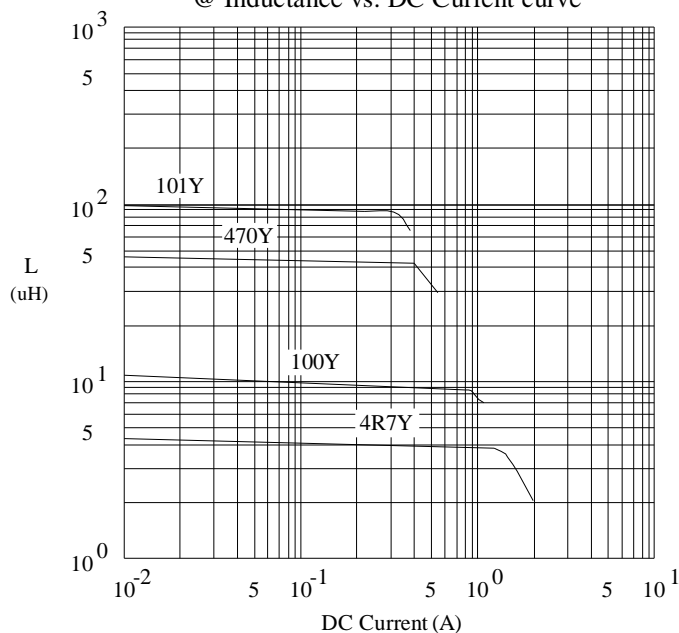
PROD. NAME	SHIELDED SMD POWER INDUCTOR	ABC'S DWG NO.	SU5028□□□□2□-□□□
		ABC'S ITEM NO.	

V . ELECTRICAL CHARACTERISTICS :

DWG No.	Inductance (μ H)	Q ref.	Test Freq. (Hz)		RDC (m Ω)		SRF (MHz) typ.	Irms (mA) typ.	Isat (mA) typ.
			L	Q	typ.	max.			
SU50284R7Y2□-□□□	4.7 \pm 30 %	8.0	100K	7.96M	24.0	35.0	70	2500	1500
SU50286R8Y2□-□□□	6.8 \pm 30 %	7.2	100K	7.96M	28.0	38.0	45	2200	1200
SU5028100Y2□-□□□	10.0 \pm 30 %	10.5	100K	2.52M	46.5	60.0	35	1800	950
SU5028150Y2□-□□□	15.0 \pm 30 %	20.0	100K	2.52M	63.0	82.0	30	1500	800
SU5028220Y2□-□□□	22.0 \pm 30 %	17.0	100K	2.52M	105.0	132.0	20	1150	680
SU5028330Y2□-□□□	33.0 \pm 30 %	18.0	100K	2.52M	150.0	195.0	15	960	600
SU5028470Y2□-□□□	47.0 \pm 30 %	13.0	100K	2.52M	195.0	250.0	14	830	450
SU5028680Y2□-□□□	68.0 \pm 30 %	12.0	100K	2.52M	260.0	340.0	10	750	330
SU5028101Y2□-□□□	100.0 \pm 30 %	35.0	100K	796K	425.0	550.0	10	520	300
SU5028151Y2□-□□□	150.0 \pm 30 %	45.0	100K	796K	600.0	750.0	8	480	280
SU5028221Y2□-□□□	220.0 \pm 30 %	40.0	100K	796K	870.0	1085.0	6	360	240

- 1) . □ : Packaging Information... [A] : Bulk [B] : Taping Reel
- 2) . "- □□□□" : Reference code
- 3) . Inductance Test Freq. : 100KHz / 0.1V
- 4) . Isat base on Δ L / LOA=35% typ.
- 5) . Irms base on Temp. rise 40°C typ.

@ Inductance vs. DC Current curve



SPECIFICATION FOR APPROVAL

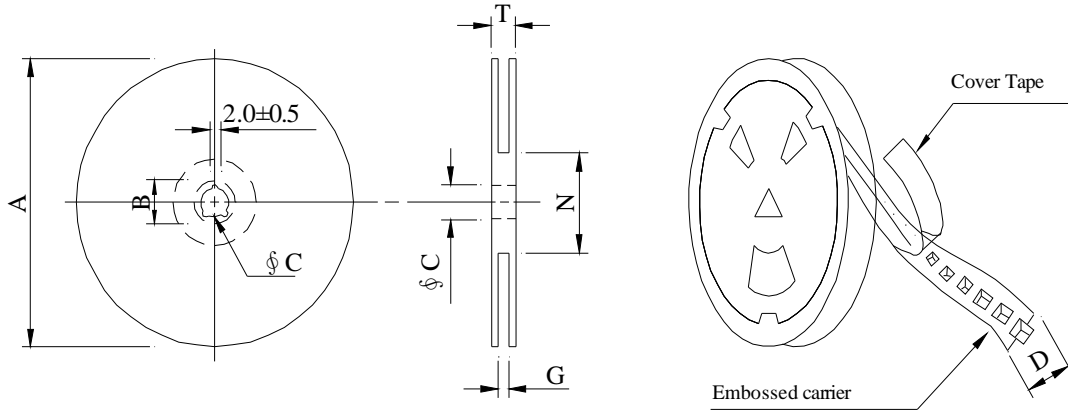
REF :20091008-B

PAGE: 3

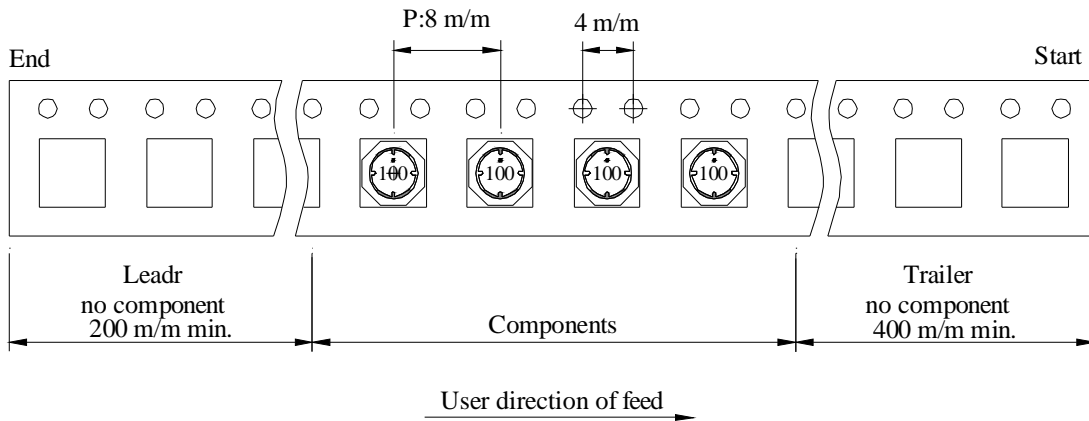
PROD. NAME	SHIELDED SMD POWER INDUCTOR	ABC'S DWG NO.	SU5028□□□□2□-□□□
		ABC'S ITEM NO.	

VI . PACKAGING INFORMATION :

(1) Configuration



※Carrier tape width : D



(2) Dimensions

Unit:m/m

Style	A	B	C	D	G	N	T
07 - 12	178	21±0.8	13	12	14 ⁺⁰	50 ⁻⁰	16.5

(3) Q'TY & G.W. Per package

Series	Inner : Reel			Outer : Carton		
	Q'TY (pcs)	G.W. (gw)	Style	Q'TY (pcs)	G.W. (Kg)	Size (cm)
SU5028	600	185	07 - 12	24,000	8.4	42 x 41 x 24

AR-001A

SPECIFICATION FOR APPROVAL

REF: 20091008-B

PAGE: 5

PROD. NAME	SHIELDED SMD POWER INDUCTOR	ABC'S DWG NO.	SU5028□□□□2□-□□□
		ABC'S ITEM NO.	

VIII . RELIABILITY TEST :

Test item	Specification	Test condition						
Solderability	More than 95% of the terminal electrode shall be covered With fresh solder.	Preheat : 155 °C / 4 hours. Solder : Sn96.5 / Ag3 / Cu0.5 or equivalent Solder temp. : 235±5 °C Flux : Rosin Dip time : 5±0.5 seconds						
Thermal shock test (Temp. cycle)	Electrical oharacteristics shall not change more than ±20%	<table style="width: 100%; border: none;"> <tr> <td style="text-align: center;">Room temp. 15 minutes</td> <td style="text-align: center;">→</td> <td style="text-align: center;">-40 °C 30 minutes</td> </tr> <tr> <td style="text-align: center;">Room temp. 15 minutes</td> <td style="text-align: center;">→</td> <td style="text-align: center;">+105 °C 30 minutes</td> </tr> </table> <p>Total : 50 cycles</p>	Room temp. 15 minutes	→	-40 °C 30 minutes	Room temp. 15 minutes	→	+105 °C 30 minutes
Room temp. 15 minutes	→	-40 °C 30 minutes						
Room temp. 15 minutes	→	+105 °C 30 minutes						
Humidity test		Temperature : 40±2 °C Humidity : 90±5% Time : 1000 hours						
High temp. Resistance test		Temperature : 105±5 °C Applied current : Per spec. Time : 96 hours						

AR-001A



SPECIFICATION FOR APPROVAL

REF :20091008-B

PAGE: 7

PROD. NAME	SHIELDED SMD POWER INDUCTOR	ABC'S DWG NO.	SU5028□□□□2□-□□□
		ABC'S ITEM NO.	

OBMW2 August 27, 1999
Magnet Wire-Component

ELEKTRISOLA (MALAYSLA) SDN BHD E143312
IALAN DAMN SATU IANDA BAIK 28750 BENTONG, PAHANG
DARUL MAKMUR MALAYSIA

Mtl Dsg	Mark Dsg	Coating Type		ANSI Typ	Temp Class
		BC	OC		
Estersol 160	E180	Polyesterimide (solderable)	—	MW-77	180
Amldester 200	A200	Polyesterimide	—	MW-74	200
Polysol-N 155	PN155	Polyurethane	Nylon	MW-80,	155,
				MW-28	100
Polysol 155	P155	Polyurethane	—	MW-79,	155,
				MW-79	130
Polysol 155g	Pg155	Polyurethane	—	MW-79	130
Polysol 155p	Pp155,Gp155	Polyurethane	—	MW-79	155
Polysol 160	P160	Polyurethane	—	MW-79	155
Polysol 180	P180	Polyurethane	—	MW-79	155
Polysol 170	P170 or G170	Polyurethane	—	MW-79	156
Polysol-N 180	PN180	Polyurethane	Nylon	—	180

Marking : Dompany name/nateriel designation or marked designation and factory identification on package ok reel

See General Information preceding These Recognitions
For use only in equipment where the acceptability of the combination is determined by Underwriters Laboratories Inc.