

## Features

- Three phase filter with 4 wires.
- Wide range frequency (suits to ship and aircraft).
- Leak current lower than 1.0mA (250V<sub>AC</sub>, 60Hz).

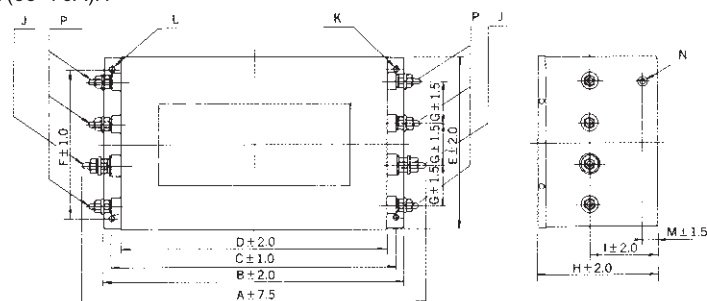
## Applications

- Inverter power supplies, Computers, NC control systems and Machinery.

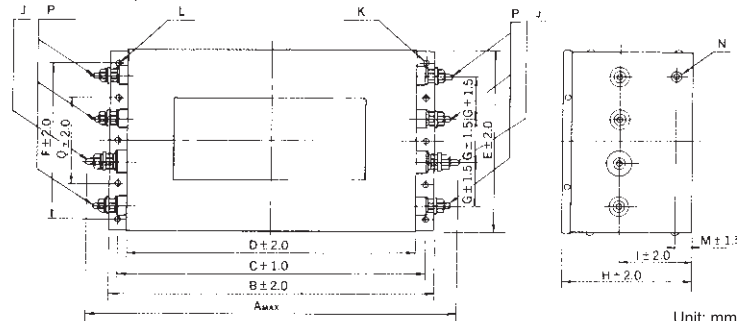


### Dimensions

T(35~70A)H

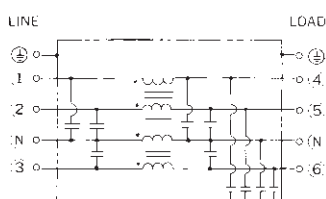


T100, 170A)H



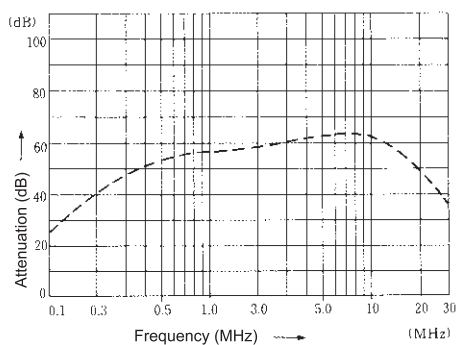
Unit: mm

### Circuit



### Static characteristics

4SUP-T70H-E-4S



Model Number	A	B	C	D	E	F	G	H	I	J	K	L	M	N	P	Q
4SUP-T35H-E-4S	255	230	215	200	140	110	30	80	40	M6	φ6.5	6.5×8	15	M4	M5	—
4SUP-T50H-E-4S	340	300	280	260	200	170	45	100	50	M10			20	M6	M10	—
4SUP-T70H-E-4S	340	300	280	260	200	170	45	100	50	M10			20	M6	M10	—
4SUP-T100H-E-4S	445	370	350	330	210	180	50	150	80	M12			25	M6	M10	100
4SUP-T170H-E-4S	515	440	420	400	280	240	60	190	90	M14	25	M6	M12	120		

## Electrical Specifications

Rated Voltage **250VAC**

Model Number	Rated Current (A)	Test Voltage	Insulation Resistance	Leakage Current (max)	Voltage Drop (max)	Operating Temperature (°C)	*Insertion losses (MHz)			
							0.15	1	10	30
4SUP-T35H-E-4S	35	Line to Ground 2000Vrms 50/60Hz 60sec	Line to Ground 500MΩmin (at 500V <sub>DC</sub> )	Less than 1mA (at 250Vrms 60Hz)	1.0Vrms	-20 ~ +40	25	40	45	30
4SUP-T50H-E-4S	50						25	40	45	30
4SUP-T70H-E-4S	70						25	40	45	30
4SUP-T100H-E-4S	100						20	40	45	30
4SUP-T170H-E-4S	170						10	30	35	30

\*Attenuation is for common mode.