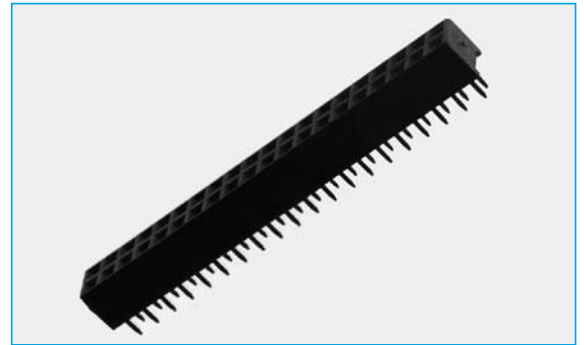


FEMALE HEADERS

FEMALE HEADER STRAIGHT - 5.5mm PROFILE

- Industry compatible
- Competitively priced
- Single or dual row
- No. of contacts 02-80
- Gold plated contacts
- 2.54mm pitch



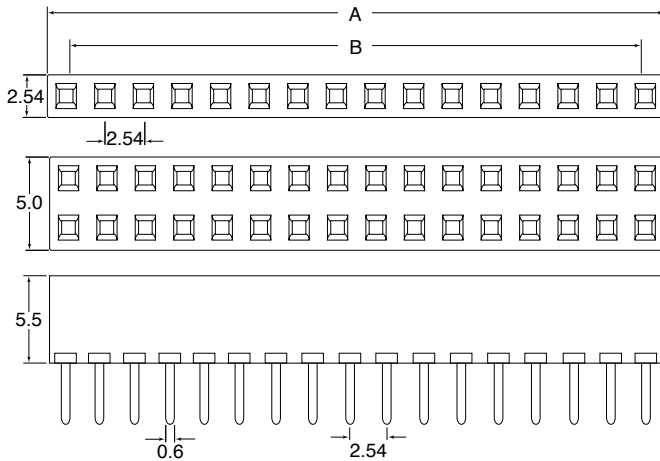
SECTION 8

SPECIFICATION

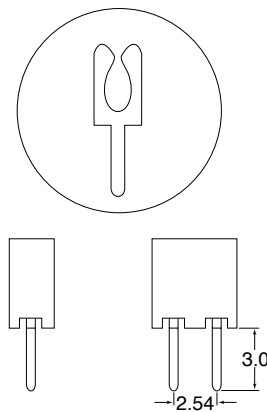
Material & Finish

Contact Material:	Phosphor Bronze
Insulator Material:	PBT & Glass-Fibre Reinforced UL-94V-0
Current Rating:	1 A DC
Contact Resistance:	30M Ω Max
Insulator Resistance:	3000M Ω Min
Dielectric Withstanding Voltage:	500V AC for One Minute
Operating Temperature:	-40°C to + 105°C

OUTLINE DRAWING



A = 2.54mm x N° of Contacts
 B = (2.54mm x N° of Contacts) -1



ORDERING INFORMATION

DBC	IDC	B4	S	04	B	G	1
Dubilier Connectors	IDC Connector	Series	N° of Rows S = Single Row D = Dual Row	N° of Contacts/per row 02=2way Thru to 43=43way	Contact Material B=Bronze	Contact Plating G= Gold Flash	Colour 1=Black