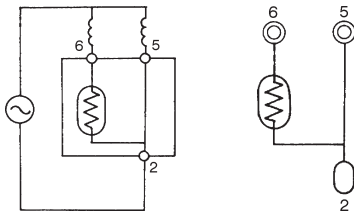


Max. Operating Voltage Vmax (V)	Resistance at 25°C R25 ( $\Omega$ )	Max Operating Current Imax (A)	Max Power Consumption W (W)	Reference Temperature Tc (°C)	Part Number
160	3.3 $\pm$ 25%	12	3.5	120	MSC** 3R3H16
180	4.7 $\pm$ 25%	12	3.5	120	MSC** 4R7H18
200	6.8 $\pm$ 25%	10	3.5	120	MSC** 6R8H20
225	10 $\pm$ 25%	9	3.2	120	MSC** 100H22
250	15 $\pm$ 25%	8	3.2	120	MSC** 150H25
300	22 $\pm$ 25%	7	3.2	120	MSC** 220H30
355	33 $\pm$ 25%	6	3.2	120	MSC** 330H35
400	47 $\pm$ 25%	5	3.2	120	MSC** 470H40
410	100 $\pm$ 25%	2.5	3.2	100	MSC** 101H41

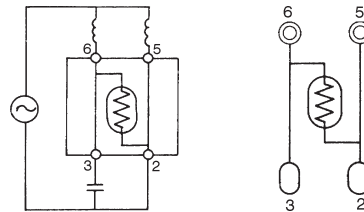
INTERNAL CIRCUIT DIAGRAMS

Note: To complete part numbers replace \*\* with correct type pinout.

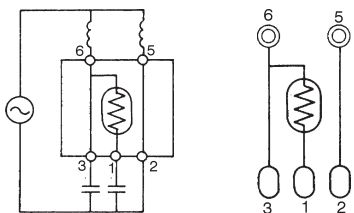
**Type 1A** Split Phase, Resistance Start



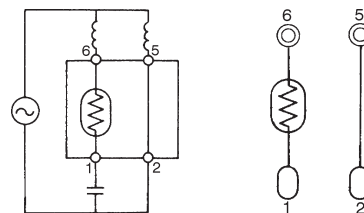
**Type 2A** Capacitance Run



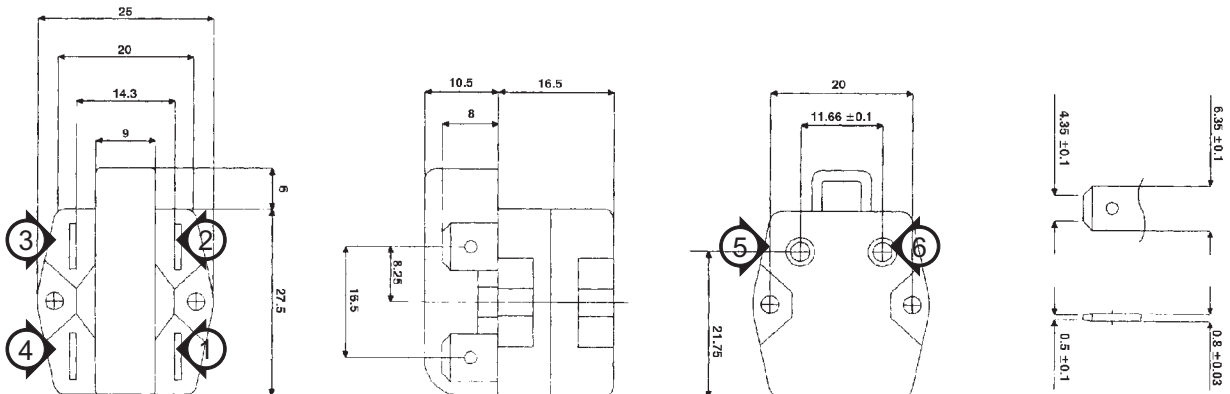
**Type 3A** Capacitance Start and Run



**Type 2B** Capacitance Start



FASTON AND PLUG TERMINAL LOCATIONS AND BODY DIMENSIONS



\*Unused Faston terminals (1 through 4) shown on drawings are omitted.