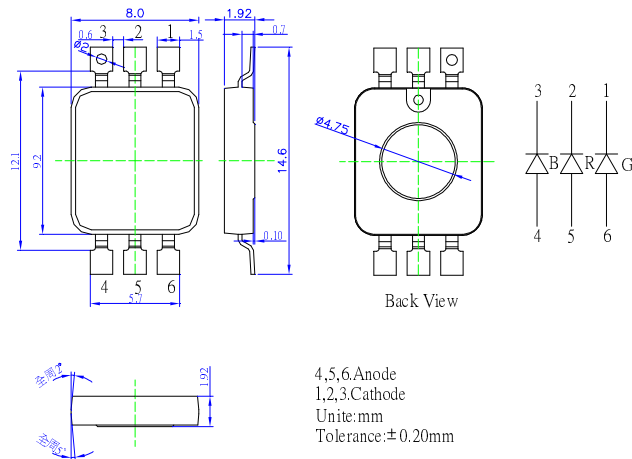


■Features

- Highest luminous flux
- Super energy efficiency
- Very long operating life (up to 100K hours)
- Superior ESD protection
- No UV

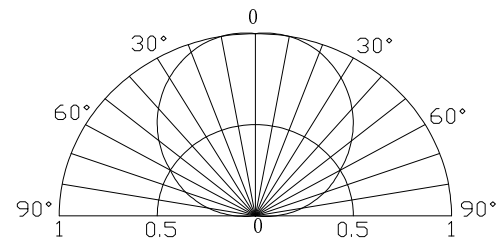
■Applications

- Toys
- Games
- Audio

■Outline Dimension

■Absolute Maximum Rating
(Ta=25°C)

Item	Symbol	Value		Unit
		Red	Green/Blue	
DC Forward Current	I_F	400	400	mA
Pulse Forward Current*	I_{FP}	500	500	mA
Reverse Voltage	V_R	5	5	V
Power Dissipation	P_D	1200	1600	mW
Operating Temperature	T_{opr}	-30 ~ +85		°C
Storage Temperature	T_{stg}	-40 ~ +100		°C
Lead Soldering Temperature	T_{sol}	260°C/5sec		-

*Pulse width Max.10ms Duty ratio max 1/10

■Directivity

■Electrical -Optical Characteristics
(Ta=25°C)

Item	Symbol	Condition	Min.	Typ.	Max.	Unit
DC Forward Voltage	$V_F(R)$	$I_F=350mA$	2.0	2.5	3.0	V
	$V_F(B/G)$	$I_F=350mA$	3.0	3.3	4.0	V
DC Reverse Current	I_R	$V_R=5V$	-	-	10	μA
Domi. Wavelength	$\lambda_D(Red)$	$I_F=350mA$	619	624	629	nm
	$\lambda_D(Green)$	$I_F=350mA$	520	525	535	nm
	$\lambda_D(Blue)$	$I_F=350mA$	465	470	475	nm
Luminous Flux	$\Phi_v(Red)$	$I_F=350mA$	-	50	70	lm
	$\Phi_v(Green)$	$I_F=350mA$	-	70	100	lm
	$\Phi_v(Blue)$	$I_F=350mA$	-	12	15	lm
50% Power Angle	$2\theta_{1/2}$	$I_F=350mA$	-	120	-	deg

Note: Don't drive at rated current more than 5s without heat sink for Commercial 1 Power emitter series.