

**RF-7800W-AA001****CLOSED LOOP  
ANTENNA ALIGNMENT  
SYSTEM**

**Designed for the  
RF-7800W-OU440  
Broadband Ethernet  
Radio**

**Quick and automatic  
antenna alignment**

The RF-7800W-AA001 is a Closed Loop Antenna Alignment System (CLAAS) designed specifically to work with the RF-7800W-OU440 Broadband Ethernet Radio (BER). The CLAAS gets immediate signal strength feedback from the radio to aim the attached antenna. The CLAAS can be used in a radio point-to-point or point-to-multipoint mode.

The RF-7800W-AA001 can scan +/- 180 degrees in azimuth and +/- 20 degrees in elevation. When limited to scanning +/- 90 degrees azimuth, the CLAAS can complete antenna aiming in less than one minute. Control for the CLAAS can be from anywhere on its attached network via web-based interface.

The CLAAS can be used with any of five different RF-7800W series antennas to meet all line-of-sight distance requirements. The unit is rugged yet lightweight and can be used with fixed or portable masts. The system can be installed without tools.

The CLAAS consists of a Servo Unit and Power Control Unit. The Power Control Unit can be operated from an AC or DC power source, and powers both the Servo Unit and a Broadband Ethernet Radio. All necessary connecting cables are provided with the unit.

The RF-7800W-AA001 CLAAS provides quick and automatic antenna alignment when using the RF-7800W-OU440 Broadband Ethernet Radio.



# Specifications for the RF-7800W-AA001

## Electrical

<b>Azimuth Range</b>	+/- 180 degrees
<b>Elevation Range</b>	+/- 20 degrees
<b>Aiming Time</b>	Less than 1 minute for +/- 90 degree azimuth only
<b>User Interface</b>	Web-based Graphical User Interface or Command Line
<b>Power Requirements</b>	90–265 VAC, 47–63 Hz, or 10.5–34.5 VDC, 200 watts max.

## Environmental

<b>Temperature</b>	-33° to +55°C (operational), -40° to +70° C (storage)
<b>Ingress Protection</b>	IP66
<b>Humidity</b>	0–100 %
<b>Vibration/Shock</b>	Per MIL-STD-810F

## Mounting

The Servo Unit mounts to tubular masts with a diameter of 1.5-4.5 in.

The supplied antenna brackets can be used with the following antennas:  
RF-7800W-AT001, RF-7800W-AT002, RF-7800W-AT003, RF-7800W-AT0012, and RF-7800W-AT0013

## Mechanical

<b>Size</b>	9.12 H x 9.37 W x 5.24 D in. (23.2 x 23.8 x 13.3 cm) Servo Unit 5.4 H x 7.5 W x 13.6 D in. (13.7 x 19.1 x 34.5 cm) Power Control Unit
<b>Weight</b>	Less than 25 lbs. (11.3 kg), Servo Unit with radio/antenna mounting brackets Less than 15 lbs. (6.8 kg), Power Control Unit

## Supplied Accessories

30-meter Power/Control Cable (12069-0068-A100)

Operator and Installation Manuals

US, UK and Euro AC Power Cables (10181-9809-009), (10081-9814-009), (10081-9831-009)

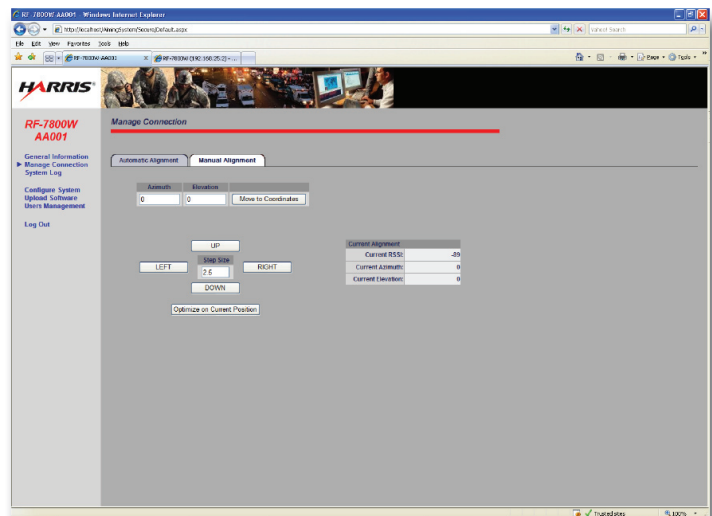
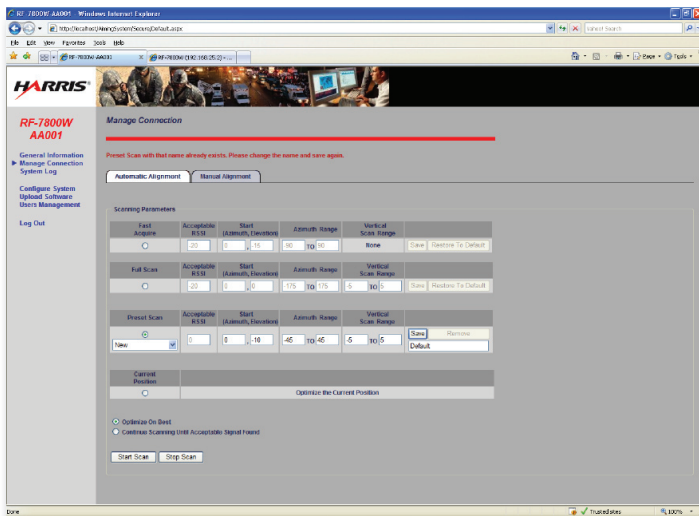
DC Power Cable (12069-1032-A015)

## Optional Accessories

15-meter Mast (12069-7005-02)

21-meter Mast (12069-7006-02)

## User Interface Screens



**RF-7800W-AA001  
Power Control Unit**