

Features

- Uses wiring-easy terminal block.
- General purpose model made with ferrite core.
- Bleed resistor for electric shock protection.

Applications

- Information processing devices, Office appliances, and Various control systems (elevators).

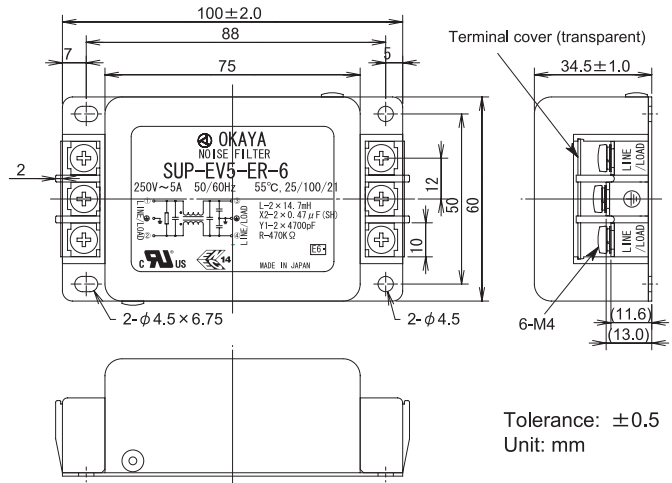


Safety Agency : Standard		File No.
UL	: UL-1283	E78644
C-UL	: C22.2, NO.8-M1986	E78644
SEMKO	: EN133200	SE/0142-12

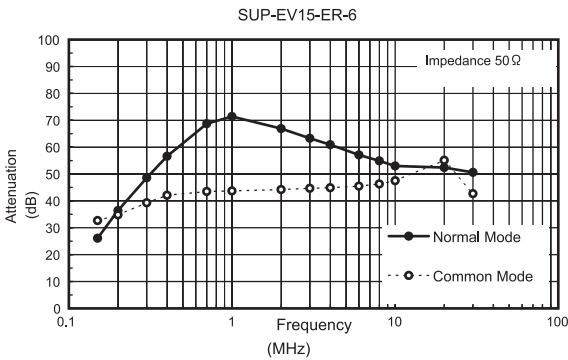
The "ENCE" mark is a common European product certification mark based on testing to harmonised European safety standard.



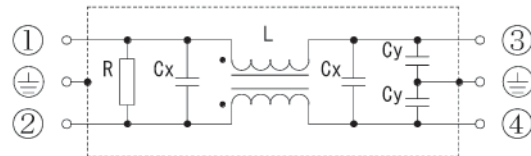
Dimensions (5~30A)



Static characteristics



Circuit (5~30A)



Electrical Specifications

Rated Voltage **250VAC**

Safety Agency	Model Number	Rated Current (A)	Test Voltage	Insulation Resistance	Leakage Current (max)	Voltage Drop (max)	Temperature Rise (max)	Operating Temperature (°C)	Insertion losses	
									Normal mode (MHz)	Common mode (MHz)
	SUP-EV5-ER-6	5	Line to Ground 250V _{ac} 50/60Hz 60sec	Line to Ground 100MΩ _{min} (at 500V _{dc})	1mA (at 250V _{ac} 60Hz)	1.0V _{ac}	45K	-25 ~ +55	0.3~20	0.15~20
	SUP-EV10-ER-6	10							0.3~20	0.2~20
	SUP-EV15-ER-6	15							0.3~20	0.2~20
	SUP-EV20-ER-6	20							0.5~20	0.5~20
	SUP-EV30-ER-6	30							0.6~20	*1.0~20

*more than 20dB