

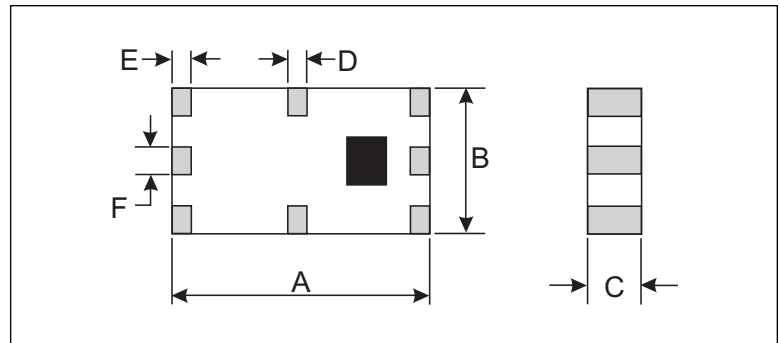
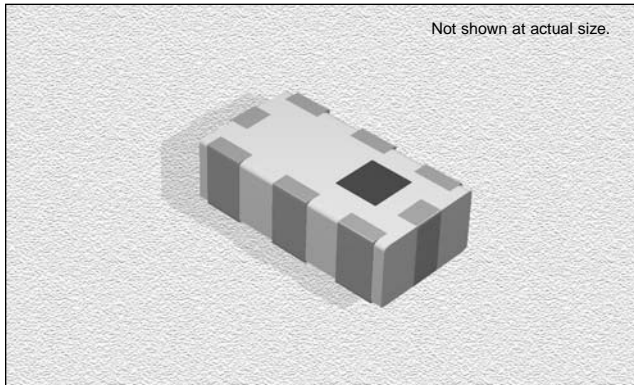
CTMCA1105 Series

SPECIFICATIONS

Part Number	Frequency Range (MHz)	Peak Gain (XZ-V)	Average Gain (XZ-V)	Return Loss	Impedance (Ω)
CTMCA1105-R92	880-960	-0.7 dBi typ.	-2.9 dBi typ.	8.5 dB min.	50

PHYSICAL DIMENSIONS

Size	A	B	C	D	E	F
mm	11.0±0.30	5.10±0.30	1.50±0.20	0.50±0.30	0.50±0.30	1.00±0.20
inches	0.433±0.012	0.201±0.012	0.059±0.008	0.020±0.012	0.020±0.012	0.039±0.008



CHARACTERISTICS

Description: Multi-layer Chip Antenna

Features: Monolithic SMD type. Wide bandwidth

Applications: WLAN, Home RF, Bluetooth Modules, etc.

Operating Temperature: -40°C to +85°C

Input Power: 5W Max.

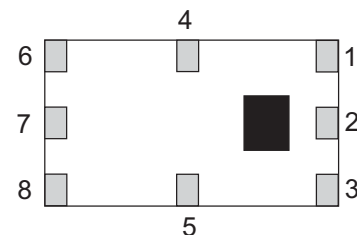
Packaging: Tape & Reel

Additional Information: Additional electrical & physical information available upon request

Samples available. See website for ordering information.

TERMINAL CONFIGURATION

No.	Function
1	NC
2	Feed Point
3	NC
4	NC
5	NC
6	NC
7	NC
8	NC



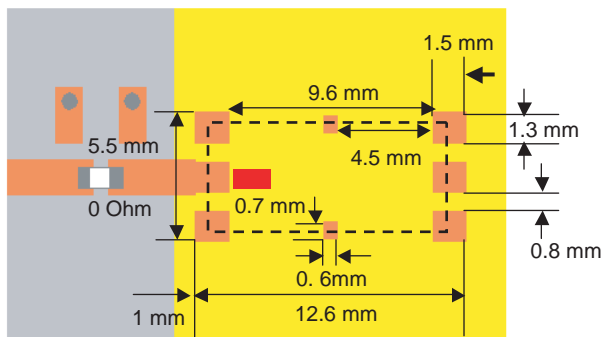
02.08.05

Mounting Considerations

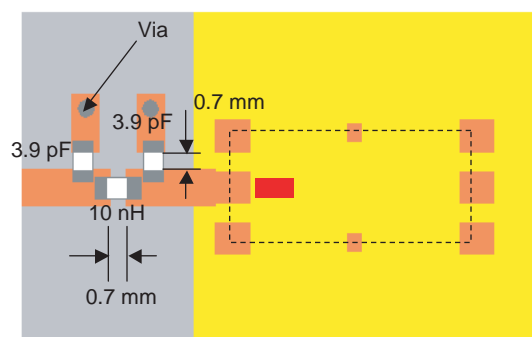
Mount these devices with brown mark facing up. Units: mm

Line width should be designed to provide 50Ω impedance matching characteristics.

a) Without Matching Circuits



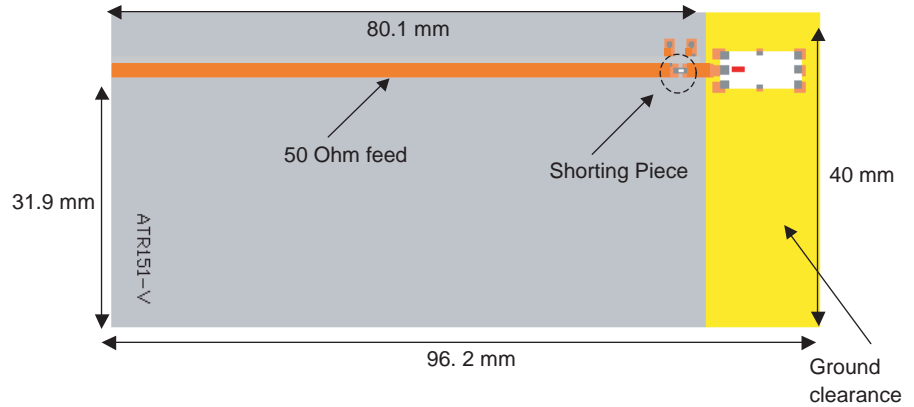
b) With Matching Circuits



02.08.05

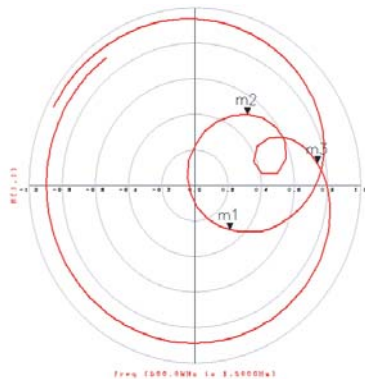
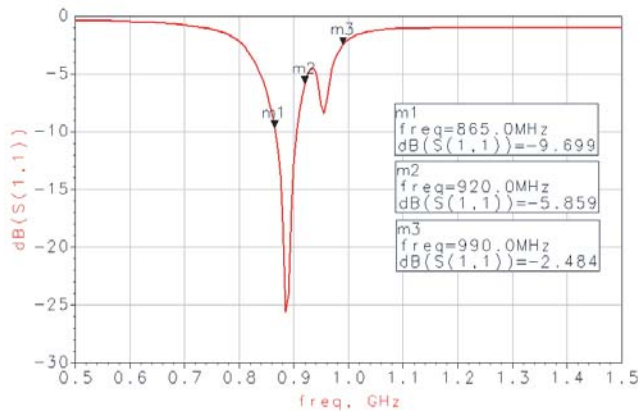
Typical Electrical Characteristics (T=25°C)

Test Board:



Return Loss

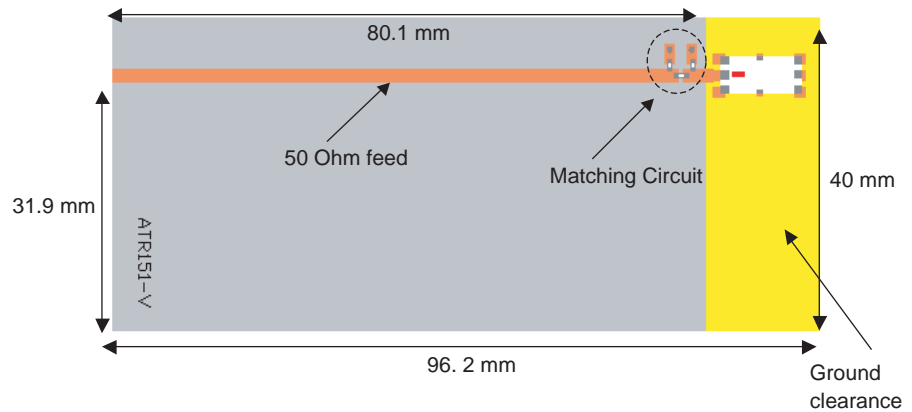
a) Without Matching Circuit



02.08.05

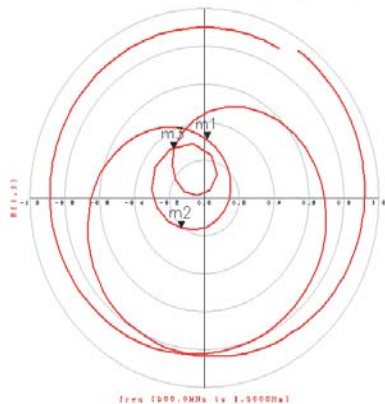
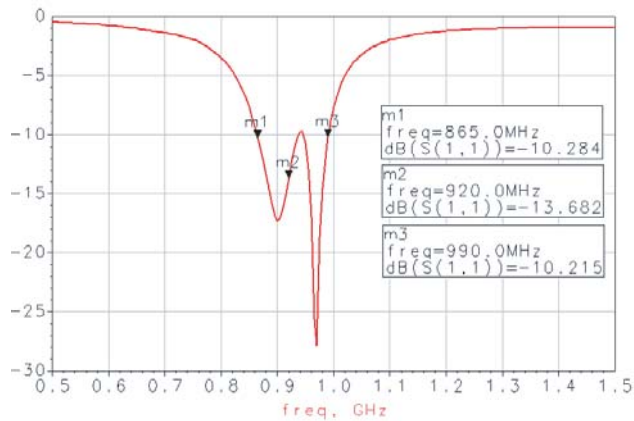
Typical Electrical Characteristics (T=25°C)

Test Board:



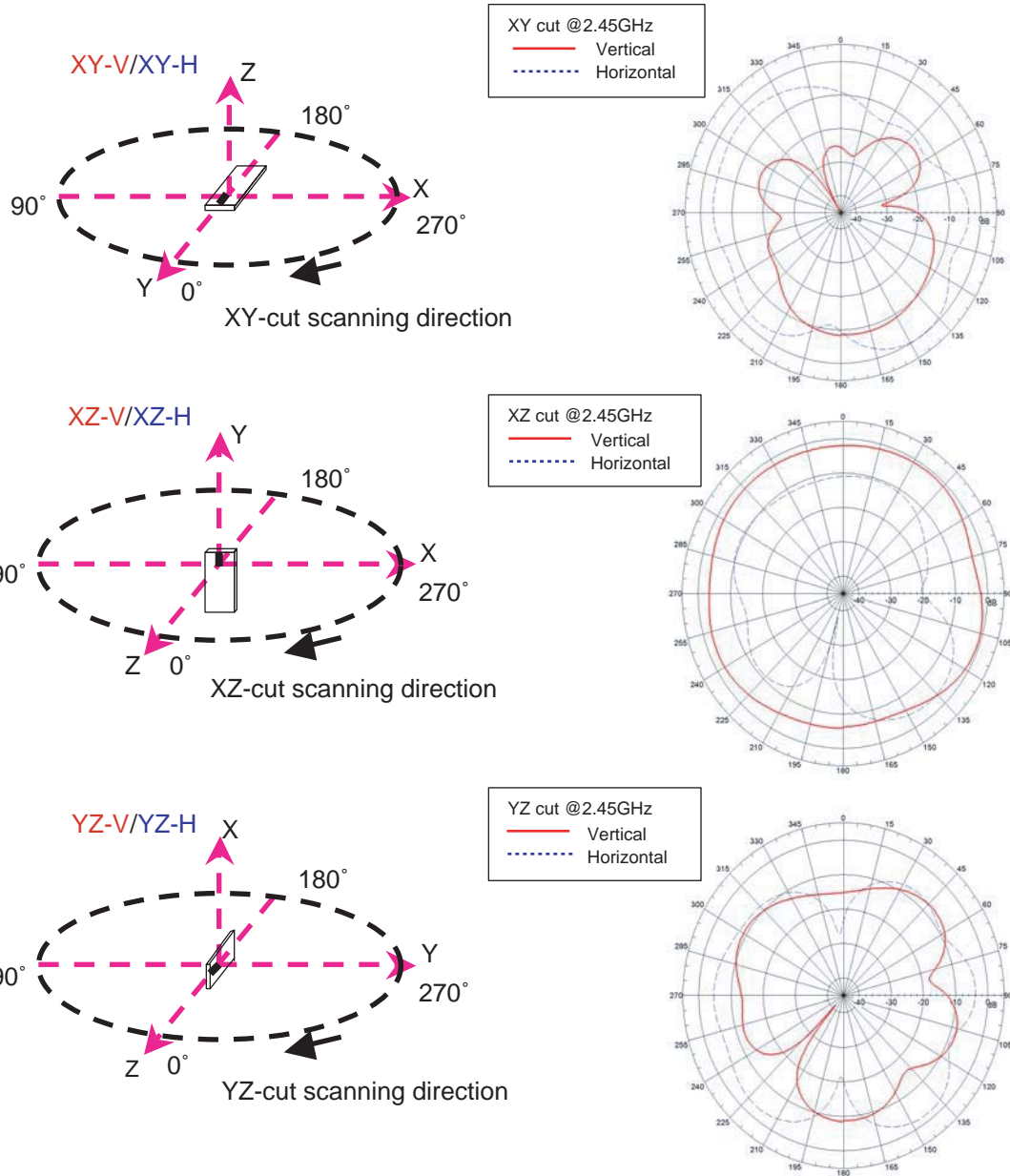
Return Loss

b) With Matching Circuit



02.08.05

Typical Radiation Patterns



02.08.05