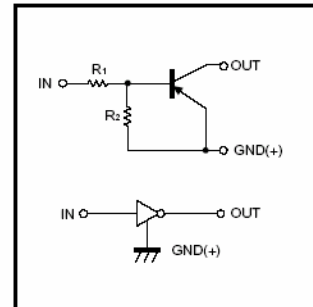


## FEATURES

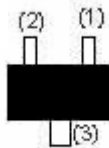
- \* Built-in bias resistors enable the configuration of an inverter circuit without connecting input resistors (see equivalent circuit).
- \* Only the on/off conditions need to be set for operation, making device design easy.
- \* The bias resistors consist of thin-film resistors with complete isolation to allow negative biasing of the input. They also have the advantage of almost completely eliminating parasitic effects.

### ●Equivalent circuit



## PIN CONNECTIONS AND MARKING

DTA114YE



1.IN  
2.GND  
3.OUT

SOT-523

Abbreviated symbol: 54

DTA114YUA

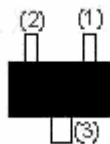


1.IN  
2.GND  
3.OUT

SOT-323

Abbreviated symbol: 54

DTA114YKA



1.IN  
2.GND  
3.OUT

SOT-23-3L

Abbreviated symbol: 54

DTA114YCA

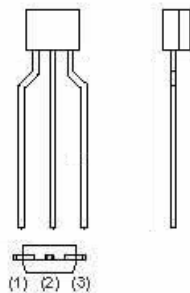


1.IN  
2.GND  
3.OUT

SOT-23

Abbreviated symbol: 54

DTA114YSA



1.GND  
2.OUT  
3.IN

TO-92S

**Absolute maximum ratings(Ta=25°C)**

Parameter	Symbol	Limits (DTA114Y□)					Unit
		E	UA	KA	CA	SA	
Supply voltage	V <sub>CC</sub>	-50					V
Input voltage	V <sub>IN</sub>	-40to+6					V
Output current	I <sub>O</sub>	-70					mA
	I <sub>C(Max.)</sub>	-100					mA
Power dissipation	P <sub>C</sub>	150	200			300	mW
Junction temperature	T <sub>j</sub>	150					°C
Storage temperature	T <sub>stg</sub>	-55 to+ 150					°C

**Electrical characteristics (Ta=25°C)**

Parameter	Symbol	Min.	Typ	Max.	Unit	Conditions
Input voltage	V <sub>I(off)</sub>			-0.3	V	V <sub>CC</sub> =-5V ,I <sub>O</sub> =-100μA
	V <sub>I(on)</sub>	-1.4				V <sub>O</sub> =-0.3V ,I <sub>O</sub> =-1mA
Output voltage	V <sub>O(on)</sub>			-0.3	V	I <sub>O</sub> /I <sub>I</sub> =-5mA/-0.25mA
Input current	I <sub>I</sub>			-0.88	mA	V <sub>I</sub> =-5V
Output current	I <sub>O(off)</sub>			-0.5	μA	V <sub>CC</sub> =-50V ,V <sub>I</sub> =0
DC current gain	G <sub>I</sub>	68				V <sub>O</sub> =-5V ,I <sub>O</sub> =-5mA
Input resistance	R <sub>1</sub>	7	10	13	KΩ	
Resistance ratio	R <sub>2</sub> /R <sub>1</sub>	3.7	4.7	5.7		
Transition frequency	f <sub>T</sub>		250		MHz	V <sub>O</sub> =-10V ,I <sub>O</sub> =5mA,f=100MHz

**Typical Characteristics**

● Electrical characteristic curves

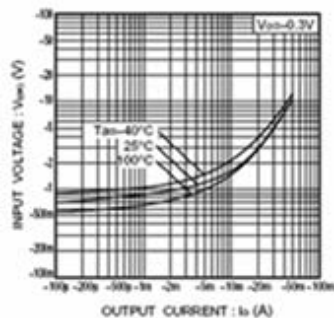


Fig.1 Input voltage vs. output current (ON characteristics)

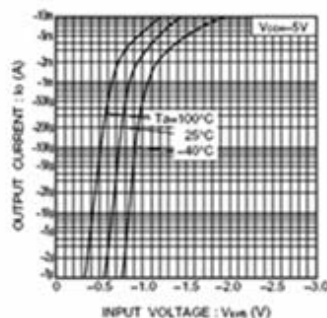


Fig.2 Output current vs. input voltage (OFF characteristics)

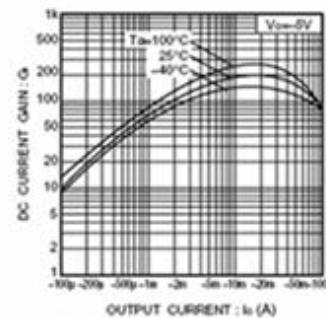


Fig.3 DC current gain vs. output current

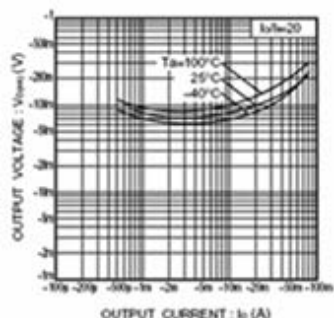


Fig.4 Output voltage vs. output current