

Features

- Wiring with Faston terminal.
- High attenuation by using a ferrite core with broad frequency characteristic.
- Wide rating up (5, 8, 10, 15, 20Ampere).
- Bleed resistor for electric shock protection.



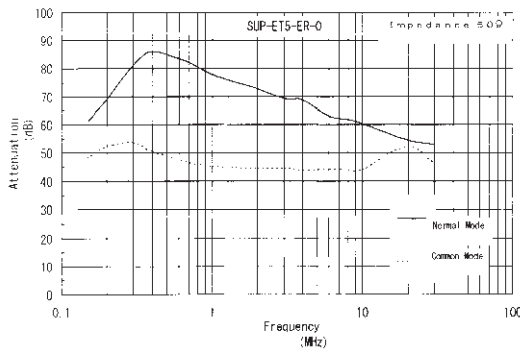
Safety Agency : Standard		File No.
UL	: UL-1283	E78644
C-UL	: C22.2, No.8-M1986	E78644
SEMKO	: EN133200	SE/0142-2B

The "ENCE" mark is a common European product certification mark based on testing to harmonised European safety standard.

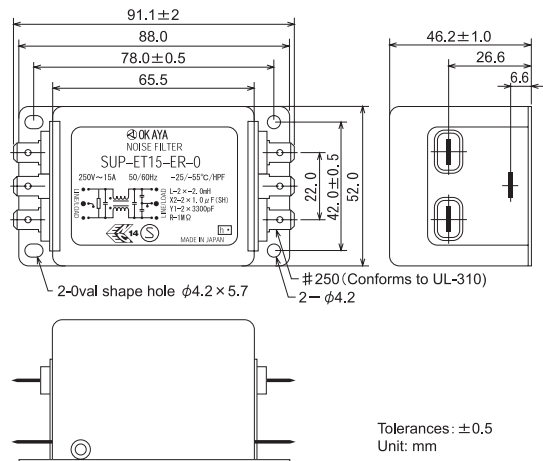
Applications

- Information processing machines, Copiers, Fax machines, and Various control systems.

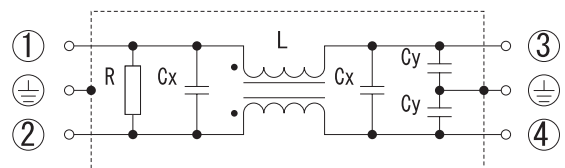
Static characteristics



Dimensions (5 ~ 20A)



Circuit (5 ~ 20A)



Electrical Specifications

Rated Voltage **250VAC**

Safety Agency	Model Number	Rated Current (A)	Test Voltage	Insulation Resistance	Leakage Current (max)	Voltage Drop (max)	Temperature Rise (max)	Operating Temperature (°C)	Insertion losses	
									Normal Mode (MHz)	Common Mode (MHz)
	SUP-ET5-ER-0	5	Line to Ground 1500Vrms 50/60Hz 60sec	L to G 100MΩmin (at 500VDC)	0.6mA (at 250Vrms 60Hz)	1.0Vrms	45K	-25 ~ +55	0.2 ~ 20	0.15 ~ 20
	SUP-ET8-ER-0	8							0.2 ~ 20	0.2 ~ 20
	SUP-ET10-ER-0	10							0.2 ~ 20	0.2 ~ 20
	SUP-ET15-ER-0	15							0.2 ~ 20	0.5 ~ 20
	SUP-ET20-ER-0	20							0.3 ~ 20	2.0 ~ 20