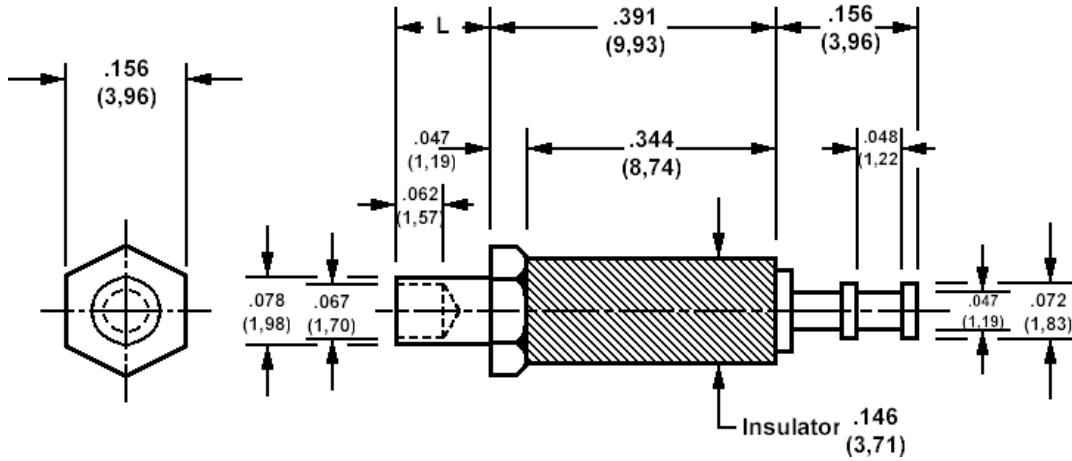


572-4886 Insulated solder terminal, Turreted



How to order code

572-4886-XX-YY-16

Basic Part No (XX = panel thickness, YY = plating finish. See tables for options)

Basic Part No.	XX	L	For Panel Thickness
572-4886	-01	.094 (2,39)	.062 (1,59)
	-02	.125 (3,18)	.094 (2,38)

Component	Material	Finish: (YY)	
		-01	-05
Terminal	Brass	Silver	Electro Solder
Stud	Brass	Cadmium (plus chromate)	Cadmium (plus chromate)
Insulator	Diallyl Phthalate (blue)		

Additional Specifications	
Dielectric Withstanding Voltage (VRMS)	3000

Recommended Spinning Tools	
Anvil	435-6806-01-00-00
Tool	435-6854-01-00-00