

PIC-M01810SMD SMD Mountable Magnet

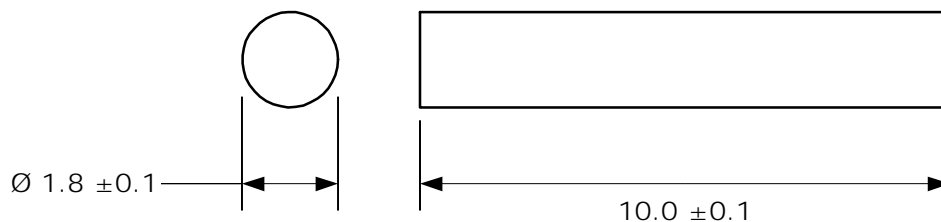
Data

Material	Sm2Co17, Ni-coated	
Orientation	axially	
Remanence Br	mT	1065
Coercivity HcB	kA/m	724
Coercivity HcJ	kA/m	1433
Energy Product (BH) max.	kJ/m ³	215
Magnetic Moment M	x10 ⁻⁵ Vs cm	0.36
Operating Temperature max.	°C	300
Curie Temperature Tc	°C	800
Temperature Coefficient Tk(Br)	%/°C	-0.035
Density	g/cm ³	8.4

Nominal values unless otherwise specified

Dimensions

in mm



Customized types available.