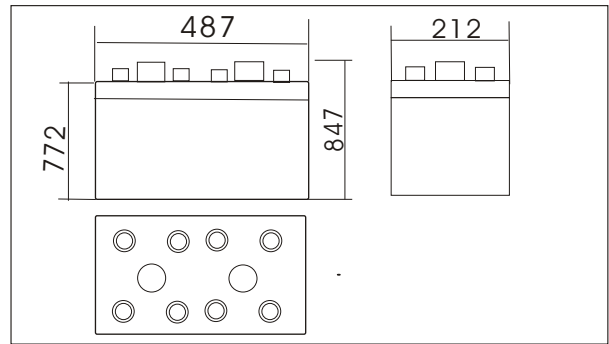




20OPzS2500(2V2500Ah)



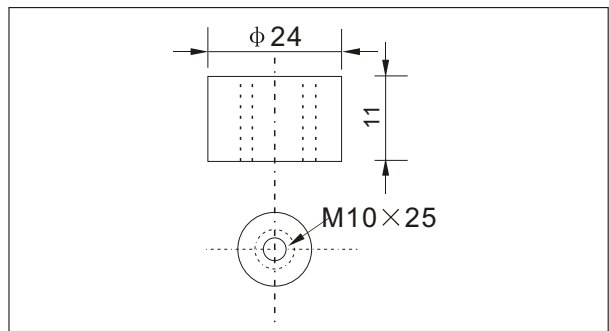
Outer dimensions (mm)



Specifications

Nominal Voltage	2 V	
Rated capacity (10 hour rate)	2500 Ah	
Dimensions	Total Height	847 mm (33.3 inches)
	Height	772mm (30.39inches)
	Length	487mm (19.2inches)
	Width	212 mm (8.34inches)
Weight Approx (Dry)	140Kg (308lbs)	

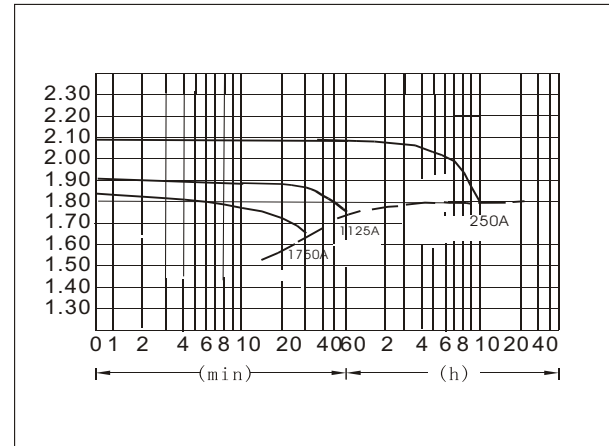
Terminal Type (mm)



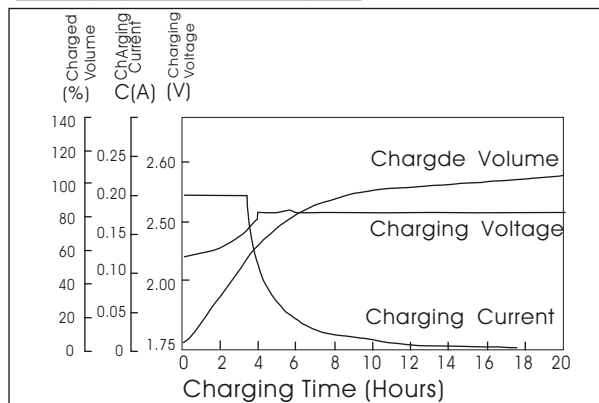
Characteristics

Capacity 25°C(77°F)	10 hour rate(250 A)	2500AH
	1 hour rate(1125A)	1125 AH
	0.5 hour rate(1750A)	875AH
Capacity affected by Temperature (10hour rate)	40°C(104°F)	102%
	25°C(77°F)	100%
	0°C(32°F)	85%
	-15°C(5°F)	65%
Self-Discharge at 25°C(77°F)	Capacity after 3 month storage	91%
	Capacity after 6 month storage	82%
	Capacity after 12 month storage	64%
Terminal quantity	8	
Charge (constant Voltage)	Initial Charging Current less than 625A Voltage 2.33-2.38V	

Discharge Curves 25°C(77°F)



Charging characteristics(25°C)



Cycling Curves

