

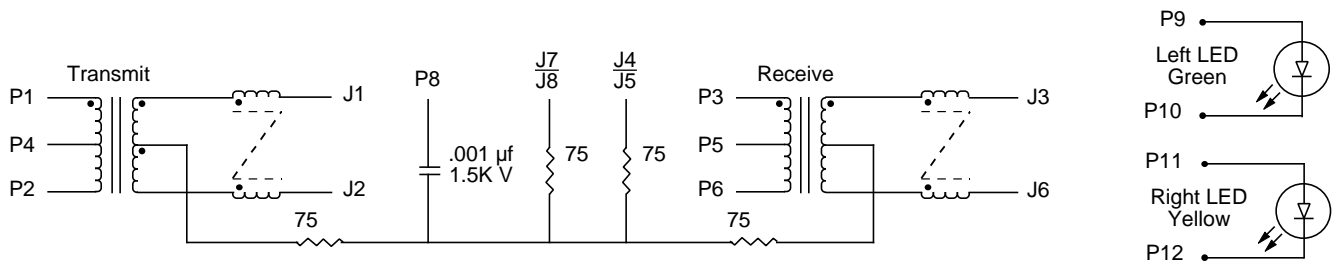
## EPJ9045-S9

- Space Saving RJ-45 Connectors
- Includes Common Mode Chokes
- UL94V-0 Rated Connector Housing
- Complete Bob Smith Termination Included
- 1500 Vrms Isolation

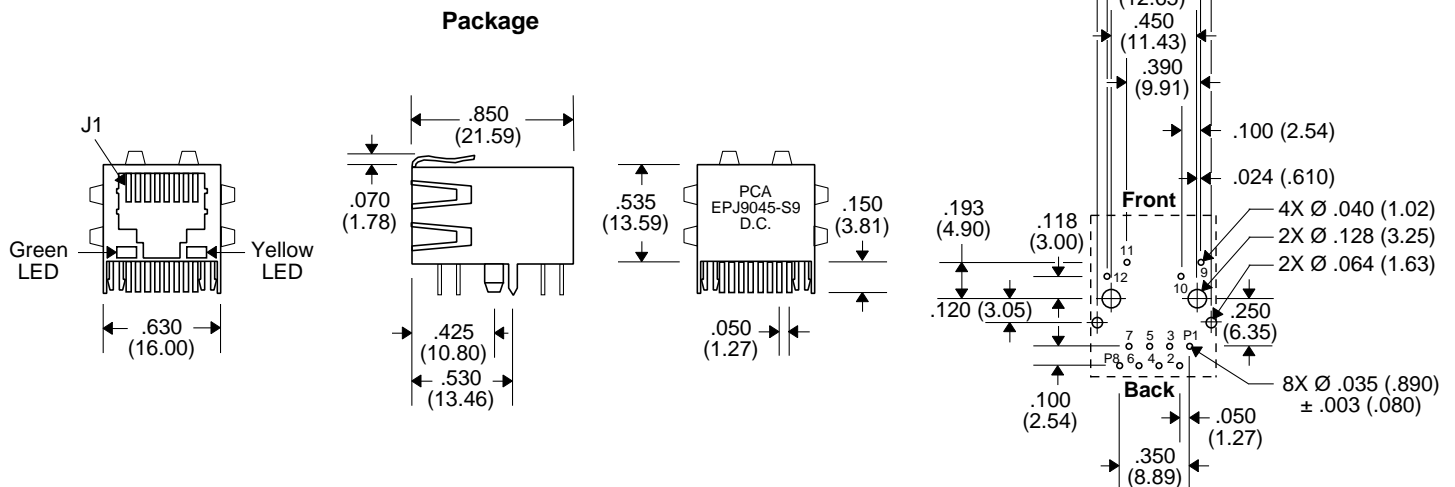
### Electrical Parameters @ 25° C

Turns Ratio (± 5%)	OCL (μH Min.)	Insertion Loss (dB Max.)	Return Loss (dB Min.)				CMRR (dB Min.)		Crosstalk (dB Min.)		
			1-10 MHz	10-30 MHz	30-60 MHz	60-80 MHz	1-50 MHz	50-100 MHz	1-30 MHz	30-60 MHz	60-100 MHz
Xmit/Rcv	@ 100 KHz, 0.1 V 8 mA DC Bias	1-100 MHz	1-10 MHz	10-30 MHz	30-60 MHz	60-80 MHz	1-50 MHz	50-100 MHz	1-30 MHz	30-60 MHz	60-100 MHz
1:1/1:1	350	-1.0	-20	-16	-12	-10	-30	-20	-40	-35	-30

### Schematic



### Recommended PCB Layout (Top View)



Unless Otherwise Specified Dimensions are in Inches /mm ± .010 /.25