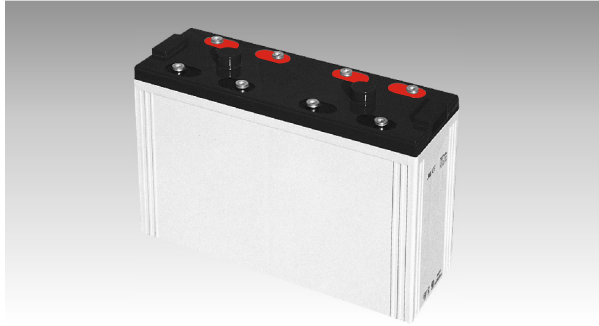
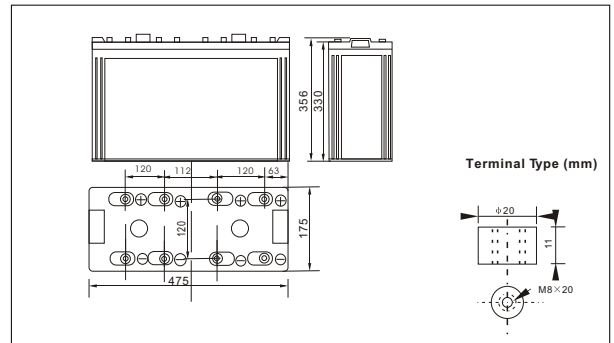




SWE210000(2V1000AH)



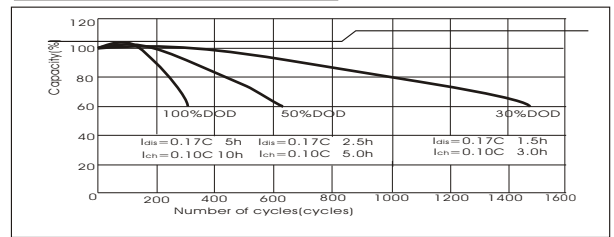
Outer dimensions (mm)



Specifications

| | | |
|-------------------------------|--------------|-----------------------|
| Nominal Voltage | | 2 V |
| Rated capacity (10 hour rate) | | 1000 Ah |
| Dimensions | Total Height | 356 mm (14.02 inches) |
| | Height | 330 mm (12.99 inches) |
| | Length | 475 mm (18.7 inches) |
| | Width | 175 mm (6.89 inches) |
| Weight Approx | | 65 Kg (143 lbs) |

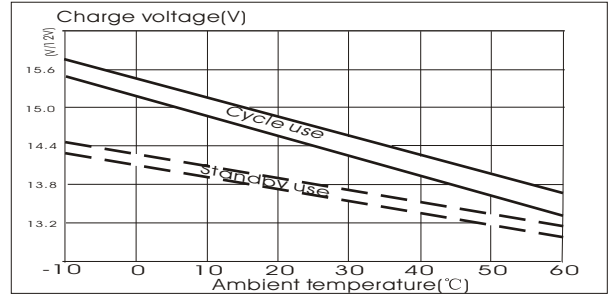
Curves of cycle life(25°C)



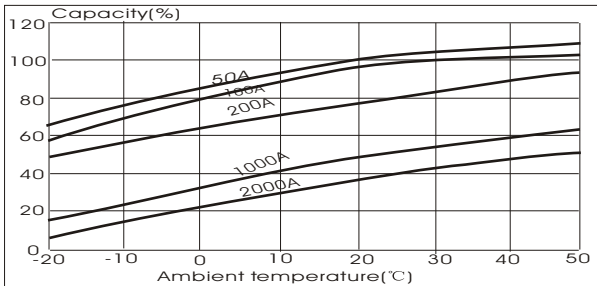
Characteristics

| | | |
|--|------------------------------------|--|
| Capacity 25°C(77°F) | 10 hour rate(100 A) | 1000 AH |
| | 5 hour rate(160A) | 800 AH |
| | 1 hour rate(600 A) | 600 AH |
| | 1.5 hour discharge to 1.75 V | 400 A |
| Internal Resistance | Full charged Battery at 25°C(77°F) | 0.2 mΩ |
| Capacity affected by Temperature (10hour rate) | 40°C(104°F) | 102% |
| | 25°C(77°F) | 100% |
| | 0°C(32°F) | 85% |
| | -15°C(5°F) | 65% |
| Self-Discharge at 25°C(77°F) | Capacity after 3 month storage | 91% |
| | Capacity after 6 month storage | 82% |
| | Capacity after 12 month storage | 64% |
| Terminal | | T20 |
| Charge (constant Voltage) | Cycle | Initial Charging Current less than 400 A Voltage 2.35-2.40V |
| | Float | Voltage 2.25-2.30V |

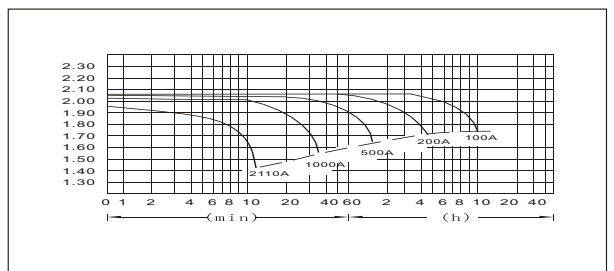
Curves of charge voltage and temperature



Curves of capacity and temperature



Discharge Curves 25°C(77°F)



Constant Current(Amp) and Constant Power(Watt) Discharge Table at 25°C(77°F)

| Time | | 5min | 10min | 15min | 30min | 1h | 2h | 3h | 4h | 5h | 8h | 10h | 20h |
|-------|---|------|-------|-------|-------|------|-----|-----|-----|-----|-----|-----|-------|
| 1.60V | A | 3203 | 2110 | 1701 | 1140 | 600 | 350 | 257 | 200 | 165 | 117 | 105 | 56.7 |
| | W | 5509 | 3756 | 3040 | 2043 | 1080 | 641 | 477 | 375 | 313 | 223 | 202 | 109.9 |
| 1.70V | A | 3102 | 1904 | 1602 | 1090 | 564 | 334 | 250 | 195 | 162 | 114 | 103 | 55.0 |
| | W | 5522 | 3543 | 2988 | 2039 | 1063 | 642 | 483 | 378 | 315 | 222 | 202 | 107.5 |
| 1.75V | A | 3001 | 1703 | 1401 | 1020 | 546 | 326 | 244 | 192 | 160 | 113 | 101 | 55.0 |
| | W | 5462 | 3229 | 2665 | 1956 | 1054 | 630 | 474 | 374 | 313 | 221 | 199 | 108.4 |
| 1.80V | A | 2892 | 1605 | 1302 | 940 | 528 | 318 | 238 | 189 | 156 | 110 | 100 | 54.0 |
| | W | 5408 | 3085 | 2500 | 1815 | 1024 | 621 | 468 | 372 | 307 | 217 | 198 | 107.2 |
| 1.85V | A | 2795 | 1504 | 1202 | 840 | 510 | 310 | 230 | 184 | 152 | 107 | 95 | 51.0 |
| | W | 5283 | 2903 | 2332 | 1638 | 1000 | 611 | 455 | 365 | 302 | 214 | 191 | 103.0 |