

*Add Modification Code 131 for Dry Lubricant on inside surfaces of Coupling Nut.
 May not be suitable for space applications.

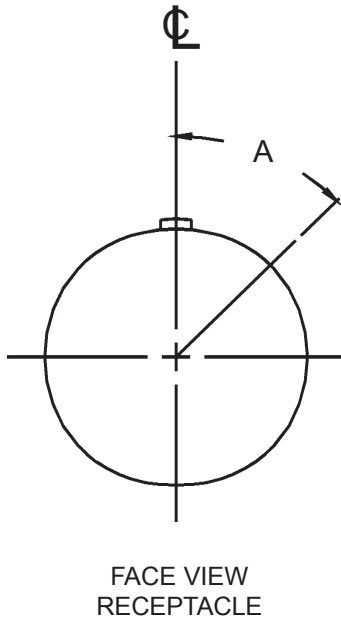
**Intermateable with the following
connectors:**

MIL-C-83723 Series I; 40M39569;
 LN29504;
 PAN 6432-1;
 NFC C93-422 (HE301B);
 NFC C93-422 (HE302);
 NFC C93-422 (HE312);
 VG 95328

TABLE ONE

Shell Size	A Max	B Max	Length Max
08	.474 (12.0)	.750 (19.1)	1.375 (34.9)
10	.591 (15.0)	.859 (21.8)	1.375 (34.9)
12	.751 (19.1)	1.031 (26.2)	1.375 (34.9)
14	.875 (22.2)	1.156 (29.4)	1.375 (34.9)
16	1.001 (25.4)	1.281 (32.5)	1.375 (34.9)
18	1.126 (28.6)	1.391 (35.3)	1.375 (34.9)
20	1.251 (31.8)	1.531 (38.9)	1.500 (38.1)
22	1.376 (35.0)	1.656 (42.1)	1.500 (38.1)
24	1.501 (38.1)	1.777 (45.1)	1.500 (38.1)

Metric Dimensions (mm) are indicated in parentheses.



Insert Arrangements								
Shell Size Design	Insert Arrangement Dash No.	Contact Size: Quantity			Alternate Insert Positions A°			
		20	16	12	W	X	Y	Z
8	8-2	2			58	122	-	-
	8-3	3			60	210	-	-
	8-4	4			45	-	-	-
	8-33	3			90	-	-	-
	8-98	3			-	-	-	-
10	10-6	6			90	-	-	-
	10-98	6			90	180	240	270
12	12-3		3		-	-	180	-
	12-4		4		38	-	-	-
	12-8	8			90	112	203	292
	12-10	10			60	155	270	295
	12-14	14			60	155	270	295
14	14-4			4	45	-	-	-
	14-5		5		40	92	184	273
	14-9	5		4	15	90	180	240
	14-12	8	4		43	90	-	-
	14-15	14	1		17	110	155	234
	14-18	18			15	90	180	270
	14-19	19			30	165	315	-
	14-22	1		4	45	-	-	-
16	16-8		8		54	152	180	331
	16-14	8		6	25	78	180	240
	16-23	22	1		158	270	-	-
	16-26	26			60	-	275	338
	16-99	21	2		66	156	223	340
18	18-11		11		62	119	241	340
	18-30	29	1		180	193	285	350
	18-32	32			85	138	222	265
	18-85	5		8	45	90	180	240
20	20-16		16		238	318	333	347
	20-24	24			70	145	215	290
	20-25	25			72	144	216	288
	20-27	27			72	144	216	288
	20-39	37	2		63	144	252	333
	20-41	41			45	126	225	-
	20-90	3		12	18	60	240	270
22	22-12			12	-	-	-	-
	22-19			19	15	90	-	-
	22-21		21		16	135	175	349
	22-32	32			72	145	215	288
	22-34	34			62	142	218	298
	22-36	36			72	144	216	288
	22-37	31	6		90	180	270	-
	22-41	27	14		39	135	264	-
	22-55	55			30	142	226	314
	22-95	26		6	26	180	266	-
24	24-19			19	30	165	315	-
	24-27	11		16	45	110	140	225
	24-31		31		90	225	255	-
	24-61	61			90	180	270	324

In alternate positions, the pin insert rotates clockwise while the socket insert rotates counterclockwise the same number of degrees relative to the center line of the master key or keyway.