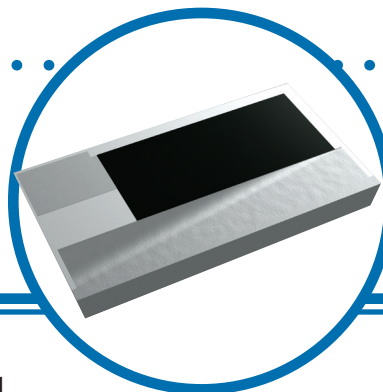


Fixed Surface Mount Microwave Line Terminators



PCS-S Series

- RoHS Compliant
- Up to 10GHz Operation
- VSWR <1.2 @ 3GHz (50Ω)
- 0603, 0805, 1206 and 1612 chip sizes



The PCS-S series fixed surface mount microwave terminators are designed with a terminal configuration that permits a reduced land pattern. This series exhibits excellent high frequency characteristics, and utilizes thin film technology to provide stable characteristics over temperature and time. Typical applications include RF test equipment and loads in base stations. The thin film construction with wrap-around terminations insure long term operational stability.

Electrical Data

		PCS0816S	PCS1220S	PCS1632S	PCS3042S
Frequency Range		DC to 10GHz	DC to 10GHz	DC to 6GHz	DC to 3GHz
VSWR	DC to 2GHz	1.2	1.2	1.2	1.2
	2.1 to 3GHz	1.2	1.3	1.3	1.4
	3.1 to 6GHz	1.3	1.3	1.4	--
	6.1 to 10GHz	1.3	1.4	--	--
Impedance		50Ω			
Power Rating (70°C)		63mW	100mW	125mW	250mW
Absolute TCR		±50ppm/°C			
Operating Temperature Range		-40°C to +125°C			
Termination		Matte Tin Finish 100% Sn			

Environmental Data

	Test Condition	Maximum
Short Time Overload	2.5 x Rated Voltage, 5 seconds	±0.2% +0.05Ω
Load Life	1000 Hours, 70°C	±0.2% +0.05Ω
Moisture Resistance	1000 Hours, 40°C, 95% RH	±0.2% +0.05Ω
Temperature Cycle	5 Cycles, +125°C high, -55°C Low	±0.2% +0.05Ω
Resistance to Soldering Heat	260°C, 10 sec.	±0.2% +0.05Ω
Insulation Resistance	500V, 1 minute	>1,000MΩ

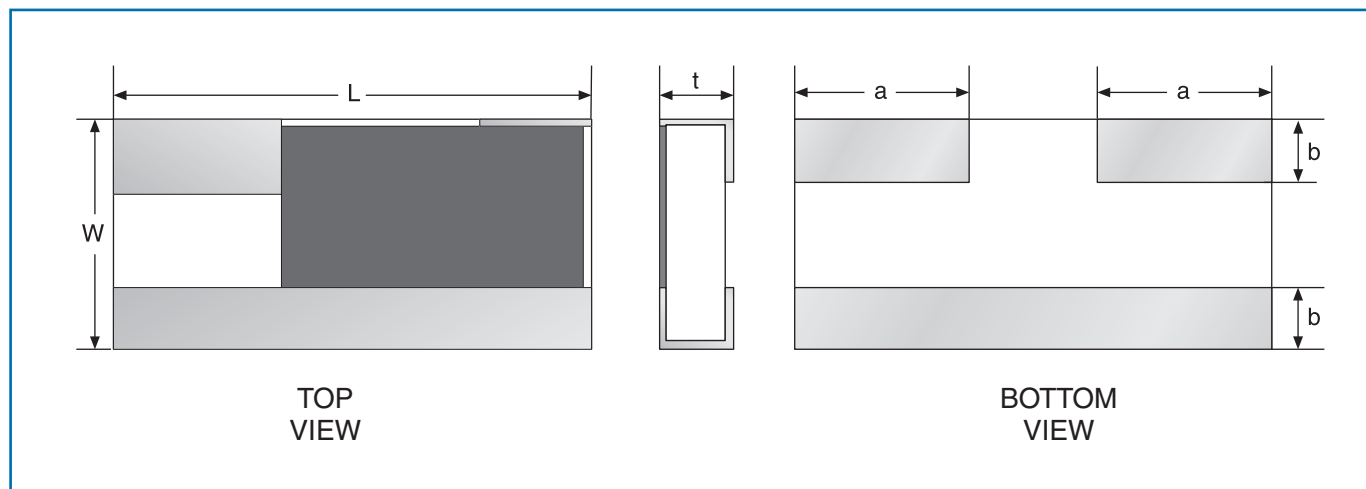
General Note

IRC reserves the right to make changes in product specification without notice or liability. All information is subject to IRC's own data and is considered accurate at time of going to print.



Fixed Surface Mount Microwave Line Terminators

Physical Data



Dimensions (mm)					
Model	L	W	a	b	t
PCS0816SLF	1.60 ± 0.15	0.80 ± 0.15	0.40 ± 0.15	0.20 ± 0.15	0.40 ± 0.15
PCS1220SLF	2.00 ± 0.15	1.25 ± 0.15	0.40 ± 0.15	0.30 ± 0.15	0.40 ± 0.15
PCS1632SLF	3.20 ± 0.20	1.60 ± 0.20	0.60 ± 0.20	0.30 ± 0.15	0.40 ± 0.15
PCS3042SLF	4.20 ± 0.20	3.00 ± 0.20	0.80 ± 0.20	0.40 ± 0.15	0.40 ± 0.15

Ordering Data

Prefix **HFR** - **PCS3042SLF** - **50R0**

Model
 PCS0816SLF = 0603 size chip with 100% Sn terminations
 PCS1220SLF = 0805 size chip with 100% Sn terminations
 PCS1632SLF = 1206 size chip with 100% Sn terminations
 PCS3042SLF = 1216 size chip with 100% Sn terminations

Impedance
 50R0 = 50Ω