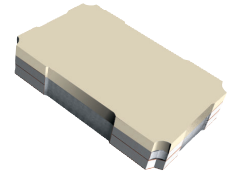


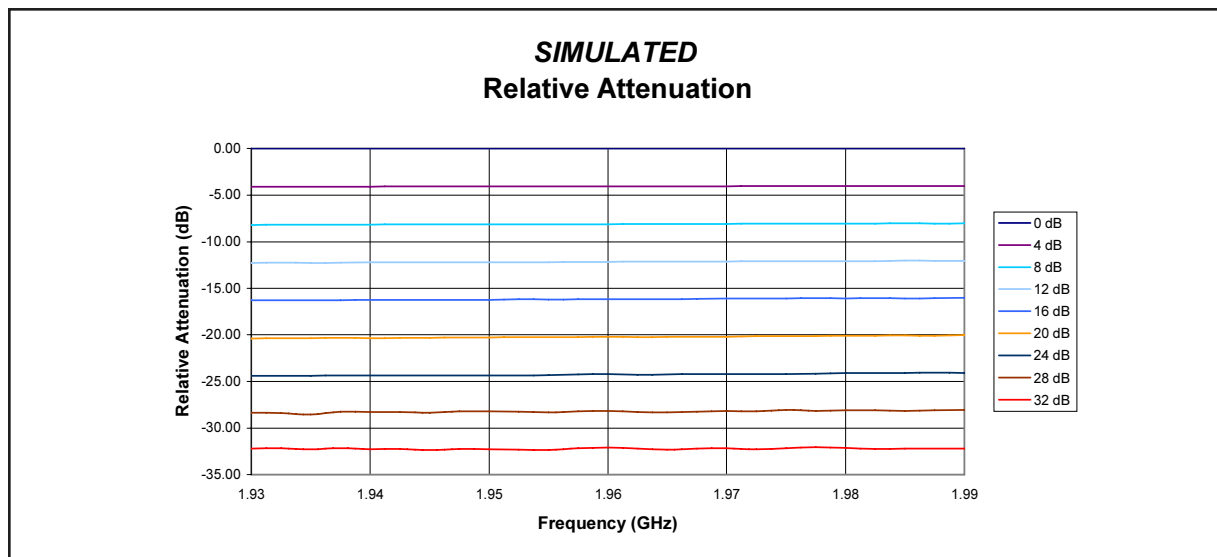
- 1.93 - 1.99 GHz
- LOW LOSS
- SURFACE MOUNT



**GENERAL SPECIFICATIONS**

Frequency Range:	1.93 – 1.99 GHz
Attenuation Range:	0 – 30 dB
Attenuation Flatness:	0.5 dB
Insertion Loss:	3 dB
VSWR:	1.5:1
Impedance:	50 Ohms
Control Current:	0 to + 22 mA
Control Voltage:	0 to + 15 V
Input 1-dB Compression Point:	+ 31 dBm
Input Intercept Point (2 Tone, 3rd Order):	+ 41 dBm
Switching Speed:	10 $\mu$ s
Operating Temperature:	-55°C to 85°C
Outline Dimensions:	0.56" x 0.35" x 0.175"

**SIMULATED PERFORMANCE CHARTS**

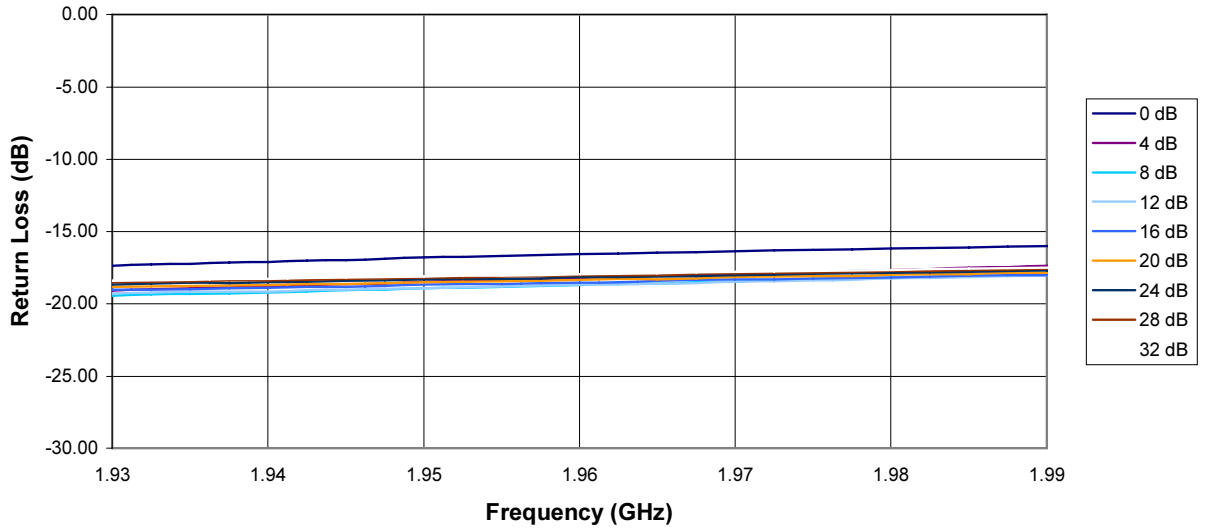


THE MULTI-MIX MICROTECHNOLOGY<sup>®</sup> GROUP IS ISO-9001 REGISTERED



U.S. patent 6,099,677 and other patents pending

**SIMULATED  
Return Loss - RF Input**



**SIMULATED  
Return Loss - RF Output**

