



Data Sheet



Product Category: IF SAW Filter

Part Number	Package	Application	Last Modified
813-IF99.84M-A	13.3 x 6.5 SMD	IF SAW Filter	Jan. 01, 2007

TYPE :
99.84MHz IF SAW Filter



PART NUMBER :
813-IF99.84M-A

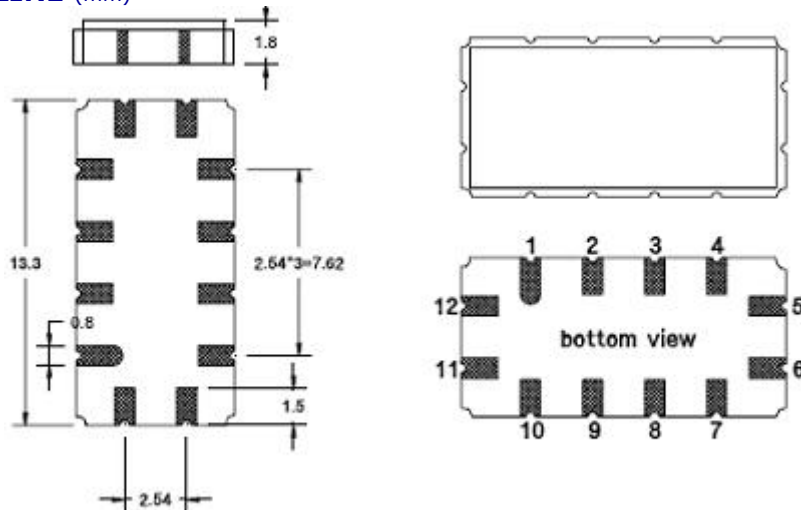
OPERATING CONDITIONS / ELECTRICAL CHARACTERISTICS

PARAMETERS	Minimum	Typical	Maximum	Units
Center Frequency (Fo)	-	99.84	-	MHz
Insertion Loss at Fo	-	9	12	dB
Source Impedance (single ended)*	-	50	-	ohm
Load Impedance (single ended)*	-	50	-	ohm
Temperature Coefficient	-	-0.03	-	ppm/C
Amplitude Ripple	-	-	1.0	dBp-p
1.2dB Bandwidth	260	375	-	KHz
5.0dB Bandwidth	-	770	930	KHz
30dB Bandwidth	-	1.58	1.69	MHz
Relative Attenuation:	-			
10MHz~ 98.1 MHz	45	52	-	dB
101.2MHz~ 150 MHz	45	50	-	dB
Operating Temperature	-	-	-	C
Absolute Delay at Fo	-	1.68	-	us
Group Delay Variation	-	-	200	ns

*With Matching Network (Ref. Testing Environment Circuit as Shown Below).

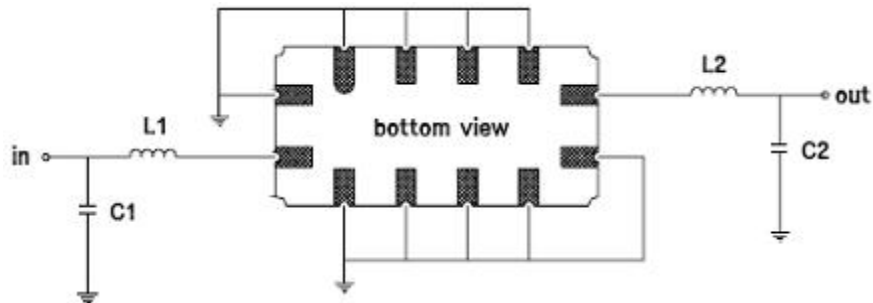
Those impedances could be modified with different impedance values and/or structures, if necessary

PACKAGE OUTLINE (mm)



PIN Descriptions: IN - 11, OUT - 5, GROUND - 1,2,3,4,6,7,8,9,10,12

TEST CIRCUIT

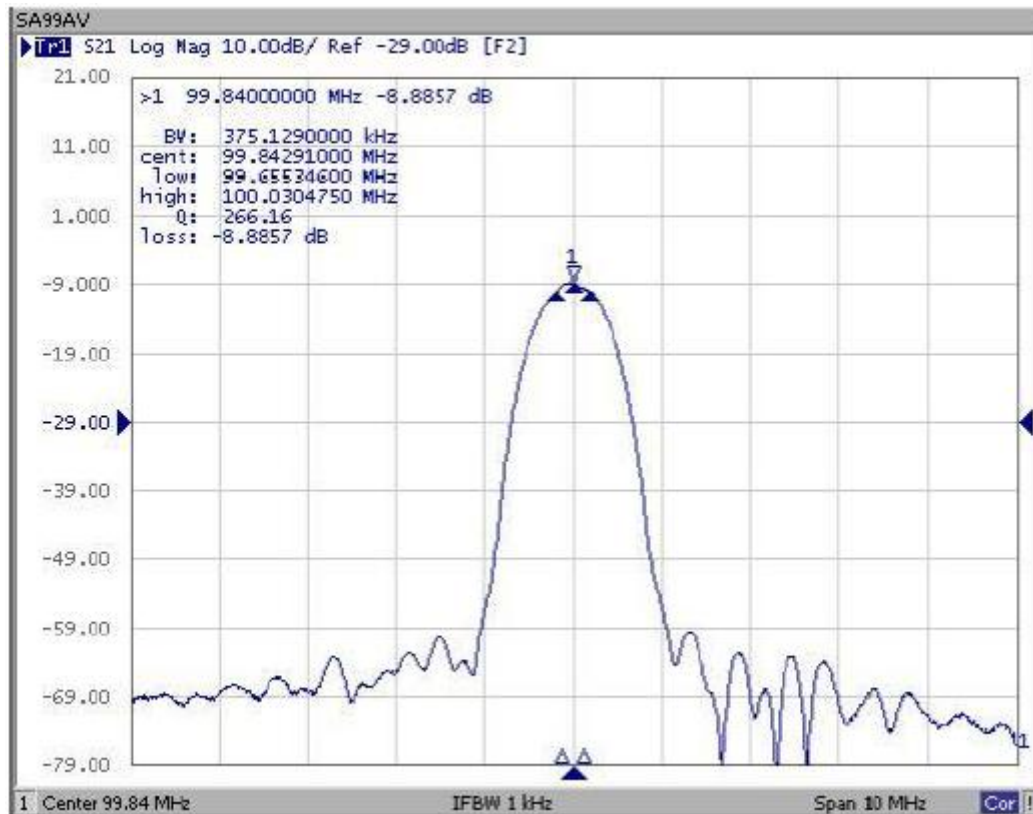


TEST FIXTURE AND VALUES/SOURCE AND LOAD IMPEDANCE 50 ohm

INPUT: L1: 180 nH Q>40; C1: 47 pF

OUTPUT: L2: 180 nH Q>40; C2: 62 pF

FREQUENCY RESPONSE



Oscilent Corporation - CALL **949.252.0522**

18195 East McDermott Street, Building D, Irvine, CA 92614, USA

Fax: 949.252.0599, E-Mail: Sales@Oscilent.com

Part No.: 813-IF99.84M-A